

SHAPER SHEET™ - C1178

INSTRUCTIONS

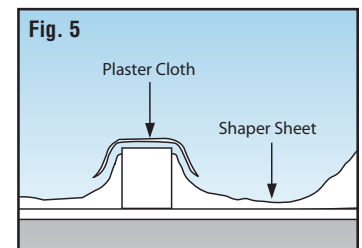
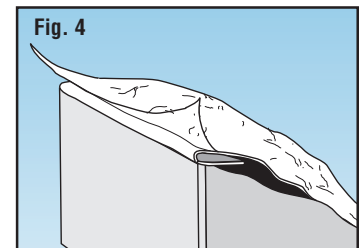
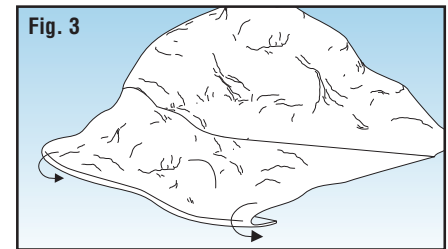
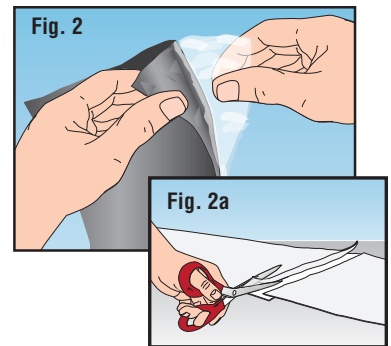
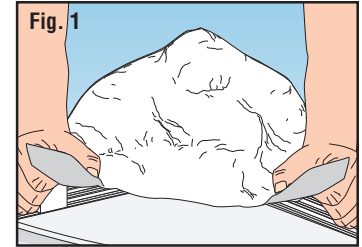
Use this unique material to model all types of terrain and free-form projects. The strong and pliable sheet holds its form and can be shaped and reshaped to create any level of detail. When used with Shaper Sheet™ Plaster (C1180) or Plaster Cloth (C1191-C1193, C1203), the Sheet's fiber mesh mechanically bonds with the plaster to create a hard and permanent shell.

- Review size of project. Cut Shaper Sheet slightly larger than project area to compensate for shaping.
- Shape and scrunch into desired terrain formation or free-form object (**Fig. 1**). Keep shaping until satisfied with formation. Cut off any excess material and save for a later use or touch-up work.
- Shaper Sheet does not typically need substructure support, especially when contours and formations are locked into place with Shaper Sheet Plaster.
- Connect flat sections of Shaper Sheet together to create long spans for large projects. Pull fiber mesh away from shaper foil along the connecting edge and expose the tacky surface (**Fig. 2**). There is a gauze backing on the fiber mesh, make sure it pulls away from the shaper foil completely. Press new section of Shaper Sheet into place on tacky surface. Cut away excess fiber (**Fig. 2a**).
- To lock Shaper Sheet contours in place and add a hard-shell surface, cover with Shaper Sheet Plaster.
- Finish terrain projects with Earth Colors™ Liquid Pigment and Woodland Scenics landscape materials. Apply directly to Shaper Sheet or after Shaper Sheet Plaster has been applied.

THINGS TO CONSIDER

- **Craft Projects:** Uniquely shaped projects may be easier to form by making the project in separate sections, then attaching the sections together with Shaper Sheet Plaster.
- **Freestanding Terrain:** Fold outer edges under for a clean, finished edge (**Fig. 3**).
- **Terrain Layouts using Profile Boards:** Along outer edges of Shaper Sheet, pull fiber mesh away from shaper foil approximately 1" to expose the tacky surface. Fold shaper foil under and press tacky surface onto edge of terrain profile (**Fig. 4**). Cut away excess fiber mesh.
- **Railroad Layouts:** Elevate track area with Risers and Inclines/Declines (ST1406-ST1416). Install Shaper Sheet up to the edge of Risers and Inclines/Declines, positioning it lower than the track area to add ravines, creek beds and other low-lying areas. Cover Risers and Inclines/Declines with a single, smooth layer Plaster Cloth (C1191-C1193, C1203). Drape the Plaster Cloth over the Shaper Sheet to blend the sections together (**Fig. 5**).
- **Add Rock Castings to Terrain:** Test-fit castings in desired locations and make needed adjustments to Shaper Sheet for best fit, then apply Shaper Sheet Plaster and let dry. Install rock castings with Shaper Sheet Plaster, Scenic Glue™ (S190) or Lightweight Hydrocal®* (C1201).
- **Large Terrain Projects:** When using a long span of Shaper Sheet, form terrain contours in manageable sections. Apply Shaper Sheet Plaster to lock terrain contours in place and let dry. When first section is dry, continue on to the next section.
- **Snow Scenes:** Add even more realism to your snow scene with Soft Flake Snow™ (SN140). Sprinkle on and seal in place with Scenic Cement™ (S191).

*Hydrocal is a U.S. Gypsum registered trademark



CAUTION
Sheet may have sharp edges.
Cutting tool recommended.
Use both with care.

This item is not a Children's Product and is not intended for use by Children.

MODELING AND CARE INFORMATION
This product suggests the use of materials that may stain or cause damage. Take care to cover project area and clothing appropriately. Follow recommendations for use and clean up.

Made in China F9 ©2013 O CO

WOODLAND SCENICS® PO Box 98, Linn Creek, MO 65052 • woodlandscenics.com