



KIT 80200 - KIRSTEN'S CORNER CAFÉ (0 Scale)
7 5/8 in W x 5 3/8 in D x 6 3/4 in H
(19.3 cm x 13.6 cm x 17.1 cm)

The bacon sizzles, the eggs fry and the coffee is constantly brewing at Kirsten's Corner Café. Kirsten's is a composite of typical architectural details found in commercial Victorian architecture. The café is designed with a tall ornate cornice and the frame is modeled as an asymmetrical corner structure design with a squared Queen Anne bay second story window. This beautiful and intricate style dominated building design in the United States and Canada during the latter half of the Nineteenth Century. You can still see some of these old beauties in cities and towns along the old railway lines. Kirsten's Corner Café is a composite of typical period architectural details and not a model of a specific prototype.

KIT CONTENTS: 4 Walls, 1 Entry Door, 1 Bay Window, 2 Window Sides, 1 Cornice, 1 Chimney, 1 sheet Roof Material, 5 Roof Support Materials, 4 sheets Clear Window Material

INTRODUCTION

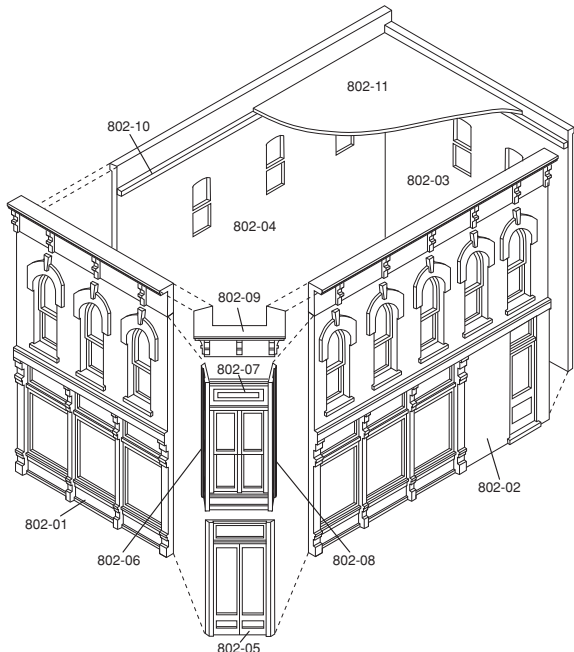
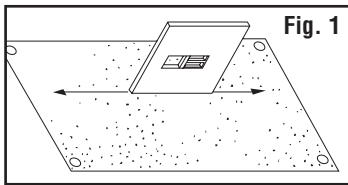
Most of the components in this kit are individually hand cast in high quality casting resin. They can be sanded, machined, drilled or carved. Because they are hand cast in open molds, surface air (bubbles) can become entrapped on surface. Noticeable voids can be filled in with plastic filler. Walls can become warped due to storage conditions. To straighten, lay piece flat, detailed side up, on a cookie sheet. Place in a cold oven and heat to 250° F. When temperature has been reached, **turn oven off** and allow piece to cool to room temperature in oven (approximately 12 hours). Do not open the oven door while cooling, as this could cause further warping.

READ THROUGH INSTRUCTIONS BEFORE BEGINNING CONSTRUCTION

Prepare Walls

Remove mold flash that occurred during the molding process using a hobby knife and sandpaper. Remove the mold release agent on molded pieces by washing in warm water with a grease-cutting dish detergent. Rinse well and let dry.

Sand Wall edges so they set straight and square. Do not sand Wall edges that have brick detail. **TIP!** Tack a piece of 120-grit sandpaper to a flat surface. Hold Wall vertical to the sandpaper and draw back and forth across the sandpaper until smooth and square. Do not sand into the detail (**Fig. 1**).



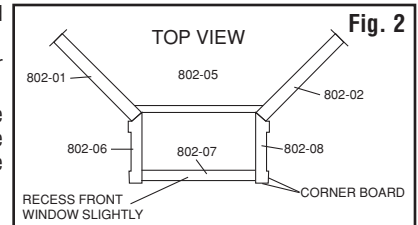
MODELING AND CARE INFORMATION: Use cyanoacrylate adhesive (CA glue/super glue) for assembly. This kit suggests the use of materials that may stain or cause damage. Take care to cover project area and clothing appropriately. Follow recommendations for use and cleanup.

CAUTION: Cutting tools recommended. Use with care.

Assemble Structure

Assemble building with cyanoacrylate adhesive (CA glue / super glue). Allow glue to set completely before moving on to next construction step. Be sure to keep Walls square and level.

1. Glue Wall (802-03) to Wall (802-04). Make sure Walls are square and brick courses line up.
2. Test fit and glue Bay Window Sides (802-06) and (802-08) to Bay Window Front (802-07). Recess Bay Window Front slightly to model corner boards (**Fig. 2**).
3. Test fit and glue Walls (802-01) and (802-02) to Bay Cornice (802-09). Cornice edges are mitered at a 45° angle to fit flush together. If needed, sand mitered edges for a proper fit.
4. Test fit and glue Front Wall Assembly (802-01), (802-02), (802-09) to Bay Window Assembly (802-06), (802-07), (802-08). It may be easier to assemble pieces upside down. The rear edges of Bay Window Sides (802-06) and (802-08) are notched and mitered to make assembly easier.
5. Test fit and glue Entry Door (802-05) in place.
6. Glue both sections of structure together. Hold structure in place with several rubber bands while drying.



Level Building

On a thumbtacked piece of 120-grit sandpaper, carefully sand bottom of building in a circular motion to even out bottom edges so it will sit level on layout.

Paint Building

1. Apply a thin coat of primer to building, Chimney and Roof Material. Let dry completely.
2. Paint using acrylic, enamel or spray paint.
 - Airbrush or Hand-brush:** Use flat finish paint.
 - Aerosol:** Use flat finish spray paint.

Interior Lighting Tip

To reduce interior glare when lighting building, paint interior walls and underside of roof flat black.

Weathering

Weathering Wash: Using a paintbrush, dab on small amounts of wash (formula follows) until desired look is achieved. Sponge off excess.

Formula: Mix 1-part acrylic paint (color suggestion: concrete or aged concrete), 12-parts rubbing alcohol, 8-parts water and 1 drop liquid dish soap.

Airbrush: Lightly spray thinned flat black acrylic paint (color suggestion: grimey black) to areas where natural discoloration can occur (near windows, chimneys, etc.)

Chalk: Rub a dark color of pastel chalk (color suggestion: gray, black, brown, etc.) on sandpaper to create a chalk dust. Using a paintbrush, dab chalk dust where discoloration can occur.

Roof

1. On interior of structure, glue Roof Supports (802-10) around all four Walls. Begin on Wall (802-03) and glue a Roof Support approximately 1/4" down from top of Wall. Continue gluing Roof Supports level around interior of Walls.
2. To make Roof (802-11), place building on Roof Material (white styrene) and trace around interior walls. Cut out and trim to fit as needed.
3. Paint Roof and set aside to dry (color suggestion: grimey black). When dry, glue in place. **TIP!** Cut small squares of scrap Roof Material and glue to Roof to simulate roof hatches. Small details add realism and interest to your building. Paint before gluing in place.
4. Glue Chimney in place where desired.

Install Windows

1. Cut Clear Window Material (clear styrene) to fit over an entire area of window openings.
2. Center Window Material over windows on inside of building and dab a tiny amount of glue carefully around edges. Repeat for each set of window openings.

Finishing Touches

Give your building the illusion of being occupied. Place a piece of black construction paper diagonally from corner-to-corner inside the building to block the light.

-OR-

Add lights to your buildings quickly and easily using the Woodland Scenics Just Plug® Lighting System. Visit woodlandscenics.com to learn more.



WOODLAND SCENICS®
 Manufactured by **WOODLAND®**
 PO BOX 98, LINN CREEK, MO 65052
 woodlandscenics.com