



MODELING AND CARE INFORMATION: Use cyanoacrylate adhesive (CA glue/super glue) for assembly. This kit suggests the use of materials that may stain or cause damage. Take care to cover project area and clothing appropriately. Follow recommendations for use and cleanup.

CAUTION: Cutting tools recommended. Use with care.

KIT #80100 - BIRDIE'S TAVERN (0 Scale)

A pint of suds, pickled eggs and a friendly game of pool await your layout residents following a hard day's work. Birdie's Tavern is representative of late nineteenth-century commercial architecture that remains today in small cities and rural towns across the United States and Canada. Recessed front doorways and tall, narrow windows with decoratively arched window heads are common features of buildings that housed bustling commerce along old railway lines. Birdie's Tavern is not a model of a specific prototype, but rather a composite of typical period architectural details.

KIT CONTENTS

4 Walls, 2 Chimneys, 2 Vestibule Side Panels, 1 Entry Door, 3 sheets Clear Window Material, 4 Roof Support Materials, 1 sheet Roof Material

INTRODUCTION

The Walls in this kit are individually hand-cast in high-quality casting resin. They can be sanded, machined, drilled or carved. Walls are hand-cast in open molds and surface air (bubbles) can become entrapped on surface. Noticeable voids can be filled in with plastic filler.

GENERAL BUILDING INSTRUCTIONS

READ THROUGH INSTRUCTIONS BEFORE BEGINNING CONSTRUCTION

Prepare Walls: Remove mold flash that occurred during the molding process using a hobby knife and sandpaper. Remove the mold release agent on molded pieces by washing in warm water with a grease-cutting dish detergent. Rinse well and let dry. Sand Wall edges so they set straight and square. Do not sand Wall edges that have brick detail.

TIP! Tack a piece of 120-grit sandpaper to a flat surface. Hold Wall vertical to the sandpaper and draw edge back and forth across the sandpaper until smooth, straight and square. Do not sand into the detail.

NOTE: Walls can become warped due to storage conditions. To straighten, lay piece flat with detailed side up on a cookie sheet. Place in a cold oven and heat to 250° F. When temperature has been reached, **turn oven off** and allow piece to cool to room temperature in oven, approximately 12 hours. Do not open the oven door while cooling, as this could cause further warping.

Assembly: Assemble building with cyanoacrylate adhesive (CA glue / super glue). Apply adhesive along joining edges and attach two Walls together at a time to form a corner. Allow glue to set completely before moving to the next construction step. Be sure to keep Walls square and level.

Prime and Paint: Prime and paint the building after it is assembled. Apply a thin coat of primer and let dry completely. Paint the building using acrylic or enamel paint. Install Clear Window Material after painting is complete.

Painting Tips and Techniques: Add a realistic mortar-look by applying a Concrete Mortar Wash to brickwork (formula below). Lay building flat so the wash will spread evenly. Dab on small amounts until desired look is achieved. Sponge off excess.

Concrete Mortar Wash Formula: 1-part acrylic paint (color suggestion: concrete or aged concrete), 12-parts rubbing alcohol, 8-parts water, 1-drop liquid dish soap

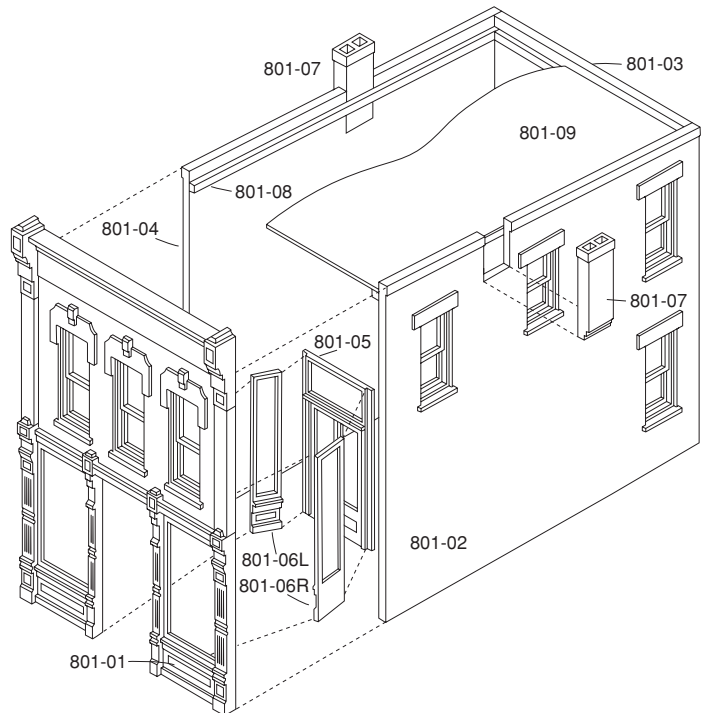
Weathering

Airbrush - Spray thinned flat black paint lightly on areas where natural discoloration can occur (color suggestion: grimy black).

Chalk - Rub a dark color of pastel chalk on sandpaper to create a chalk dust (color suggestion: gray, black, brown, etc.). Using a paintbrush, dab chalk dust where discoloration can occur.

ASSEMBLE BUILDING

1. Glue Left Vestibule Side Panel (801-06L) and Right Vestibule Side Panel (801-06R) to Entry Door (801-05). Glue both Panels at an outward angle for proper fit. Test fit with Front Wall (801-01) and make needed adjustment before glue sets. Do not glue in place to Front Wall at this time.
2. Glue Chimneys x2 (801-07) flush with backside of Side Walls (801-02 and 801-04).
3. Glue Back Wall (801-03) to Side Wall (801-04). Make sure Walls are square and brick courses line up.
4. Glue Vestibule Assembly to backside of Front Wall (801-01).
5. Glue Side Wall (801-02) to Front Wall (801-01). Make sure Walls are square and brick courses line up.
6. Glue the Side Wall Assemblies to each other. Make sure Walls are square and brick courses line up.
7. Glue Roof Supports x4 (801-08) around inside of Walls, about 3/8" down from top, as illustrated.
8. Cut Roof Material (801-09) to size and glue to top of Roof Supports.
9. After painting and weathering, cut and glue Clear Window Material in place on inside of building.



WOODLAND SCENICS® Manufactured by
WOODLAND®
 PO BOX 98, LINN CREEK, MO 65052
 woodlandscenics.com