



WOODLAND SCENICS®

S1485

TOWN & FACTORY BUILDING SET™

With 13 separate buildings and more than 70 casted metal accessories, the Town and Factory Building Set is a great way to add structures and detail to your train layout. The easy-to-assemble buildings can be used on the Scenic Ridge® Lightweight Layout Kit or any N scale layout.

Scenic Ridge is a complete N scale layout that includes all the layout, terrain and landscape materials needed to finish a 3x6-foot model railroad. Requires no power tools and anyone can build it.

BUILDING LIST

No.	Name	No.	Name
1	General Store	11	Pioneer Press
2	Dew Drop Inn	12	Café
3	Otto's Parts	13	Baxter Hardware
4	E-Z Loan Pawn Shop	14	Shotz Guns & Tackle
6	Kitt Transfer	15	Reel Theater
7	Cooke's Drug	16	Best Rest Hotel
8	Bank & Trust Co.		

DETAILS LIST

	Part No.	Name	Qty.		Part No.	Name	Qty.
BILLBOARD	1	Billboard	1	MISC. DETAILS	22	Propane Tank	5
	2	Catwalk	1		23	Standing Drop Off Mailbox	3
	3	Light Bar	2		24	Ladder	2
	4	Outer Brace	2		25	Car Floor Jack	1
	5	Inner Brace	1		26	Tractor Tire	1
TRACTOR	6	Rear Wheels	2		27	Bench	4
	7	Tractor Body	1		28	6 Barrels w/Skid	3
SWAMP COOLER	8	Side	4		29	Barrels in Group- 2 Lying & 2 Standing	1
	9	Top	1		30	Wooden Skids	13
ROOFTOP BILLBOARD	10	Rooftop Billboard	1		31	Barrels	3
	11	Billboard Brackets	3		32	Electric Meter Poles	2
FORK LIFT	12	Steering Column	1		33	3 Barrel Group	1
	13	Chassis	1		34	4 Standing Barrels	1
	14	Roll Bar	1		35	3 Standing/1 Lying Kegs	1
	15	Lift Fork	1		36	Wooden Crates (small)	2
	16	Lift Frame	1		37	Wooden Crates (large)	2
CANOPY & AWNINGS	17	Reel Theater Sidewalk Canopy (plastic)	1		38	Light Pole	6
	18	Reel Theater Window Awnings (plastic)	6		39	Tractor Tire w/o Rim	1
	19	Pioneer Press Awning (plastic)	1		40	Street Lights	15
	20	Awnings Front	3		41	Beer Bottle Sign	1
	21	Backdoor Awning	1		42	Double Chimney (large)	2
					43	Single Chimney	2
				44	Small Chimney	2	
				45	Roof Vents	2	
				46	Roof Hatches	4	

ADDITIONAL ITEMS INCLUDED WITH KIT:

Blackout Paper for Interiors - 4 (7 3/4 in x 4 1/2 in)(19.6 cm x 11.4 cm); 1 (4 7/8 in x 3 7/8 in)(12.3 cm x 9.84 cm) • Wire for Sidewalk Canopy - 1 (6 in)(15.2 cm) • White Plastic for Signs - 1 (3 1/2 in x 3 1/2 in)(8.89 cm x 8.89 cm) • Dry Transfer Decal Sheet - 1 • Full Color Poster Sheet - 1

GENERAL PLACEMENT INSTRUCTIONS: We have included a footprint on the back page showing the suggested placement of the buildings used on the Scenic Ridge layout. Since the buildings are packaged and assembled individually you can use any arrangement you wish. Each building includes its own set of instructions. The following is a list of general instructions for preparing, gluing and painting the individual parts and castings. The various metal castings and details can be placed on the layout anywhere you wish. For instance, the Forklift, Barrels, Crates and Skids can sit next to the factory or behind the buildings along with the Propane Tanks. Street Lights and Light Poles should be placed in front of buildings next to a street. Swamp Cooler and Rooftop Billboard should be placed on buildings with flat roofs.



CAUTION: Cutting tools recommended. Use with care.



MODELING AND CARE INFORMATION

This kit suggests the use of materials that may stain or cause damage. Take care to cover project area and clothing appropriately. Follow recommendations for use and cleanup.

PAINTING AND DETAILING PLASTIC PARTS

There are different methods that can be used to paint the buildings and details. We recommend airbrushing with solvent-based enamel paints. For hand-brushing, use water-soluble, flat finish acrylic paint. For Aerosol, use flat finish spray paint. We recommend natural brick colors such as rust, tan or other earth tones. See photo on box for suggested coloring. Paint roofs in flat tones and vary colors to resemble weathering and enhance shingle detail. Color of window and door frames can match or contrast with building. Building may be aged with chalks or lightly misted by airbrushing with thinned flat black paint. Small details painted in contrasting colors will enhance the building's appearance. See the photo on the box for painting ideas. Scrape paint from glue points. Walls and other parts may be painted before assembly. If buildings are painted after assembly, be careful not to paint over the clear window material.

DRY TRANSFER DECALS

- Place Dry Transfer Decals in locations shown on front of package or where desired.
 - Place sheet with decal pressed against surface. Hold sheet firmly so decal will not move while applying. Rub top of sheet over desired decal with a burnisher or dull pencil.
- NOTE:** It may be easier to cut out decal before applying to surface.
- Carefully remove decal sheet. If transfer was incomplete, let sheet fall back into place and repeat procedure.
 - Place backing paper over decal and reburnish. Repeat with other decals.
- TIP:** If decals are fragmented, they can still be used. This effect adds a realistic, weathered look.
See the entire line of Woodland Scenics products at your favorite hobby store or visit us at woodlandscenics.com.

DRY TRANSFER DECALS THAT COULD BE BACKED WITH PLASTIC

Best Rest Hotel, General Store, Baxter Hardware, E-Z Loan Pawn Shop, Shotz Guns & Tackle, Pioneer Press, Bank & Trust Co., Cooke's Drug.

Follow these steps to achieve a 3-dimensional effect for the sign decals.

- Apply appropriate Dry Transfer Decal (see suggested list) to surface of White Plastic Sheet by following the above Dry Transfer Instructions.
- Using a hobby knife, carefully cut out plastic-backed Dry Transfer Decal as close to the edges of the printed decal as possible (**Fig. 1**).
- Blacken white edges of plastic backing with a marker (**Fig. 2**).
- Glue sign to desired building. See photo and illustration for suggested placement (**Fig. 3**).

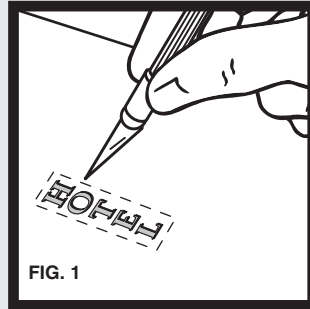


FIG. 1

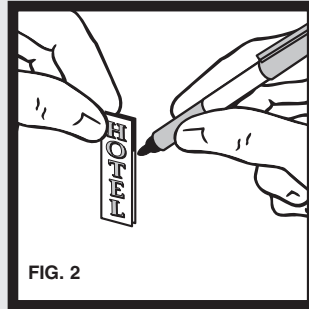


FIG. 2

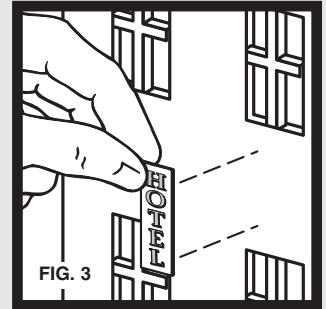


FIG. 3

OPTIONAL IDEA

The cutting diagram below maps out the pattern that will allow enough room for all the buildings to fit on the Blackout Paper. Use a straightedge and a pencil to mark the Blackout Paper following the guidelines on the cutting diagram. To complete the illusion that the building is occupied, cut out Blackout Paper then place it diagonally from corner-to-corner inside the building to block light from entering.

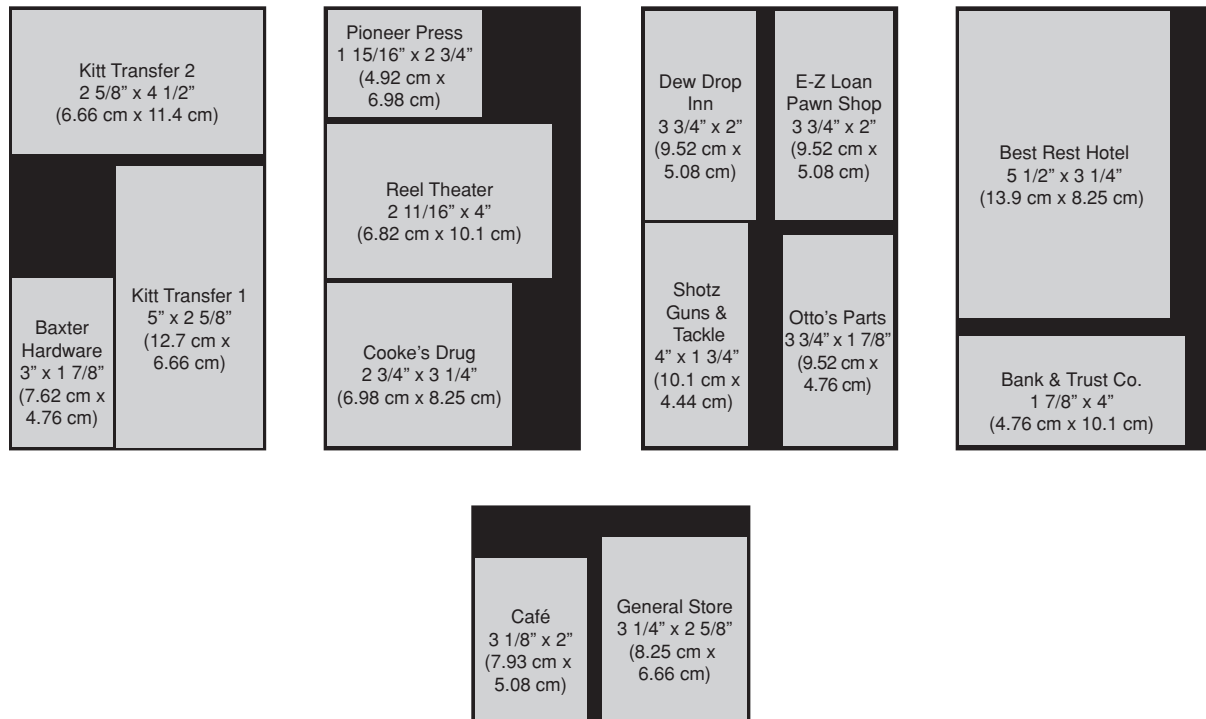


FIG. 4

CANOPY AND AWNINGS INSTRUCTIONS

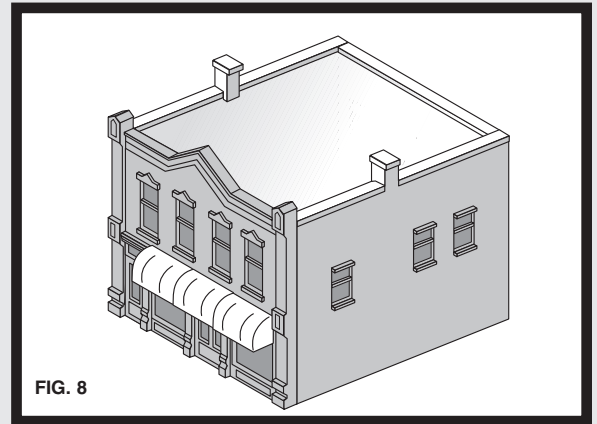
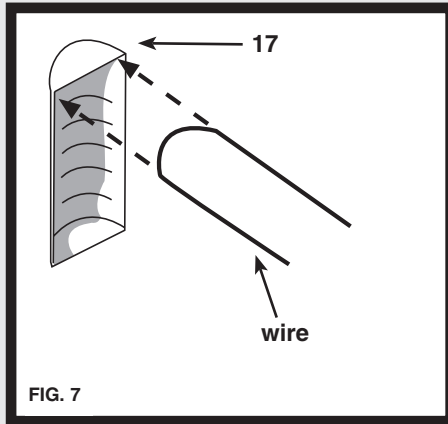
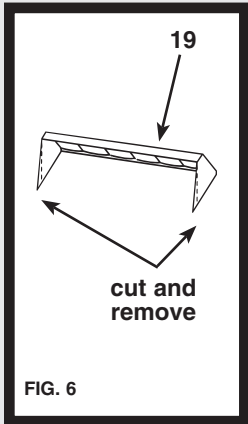
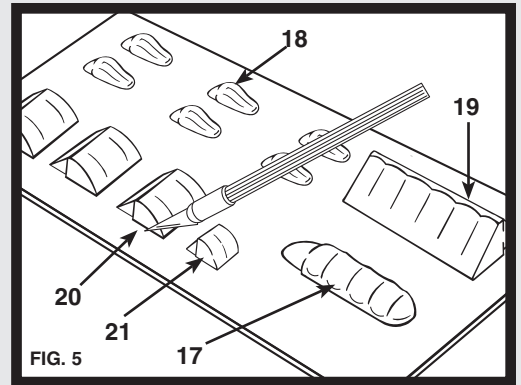
Paint Awnings and Canopy the color of your choice and let them dry.

Cut carefully around Awnings and Canopy using a sharp hobby knife (**Fig. 5**).

Remove backsides or bottoms of Parts 17, 18, 19, 20 and 21. Cut off sides to molded-in line of Part 19, so it will fit the wall at a right angle (**Fig. 6**).

Bend Wire to fit beneath theater door Canopy. Cut Posts to proper height (**Fig. 7**).

Glue Parts 17 through 19 and 21 to buildings as shown on the box photo or wherever you desire. The three Front Awnings, Part 20, can be attached together to any building as shown (**Fig. 8**) or on separate buildings where they look good and fit well.



GENERAL INSTRUCTIONS FOR METAL CASTINGS

The Town and Factory Building Set contains more than 70 metal castings. These details add life to your layout and make it more than a set of buildings. They are easy to assemble, paint and place. Follow these instructions for preparing the castings.

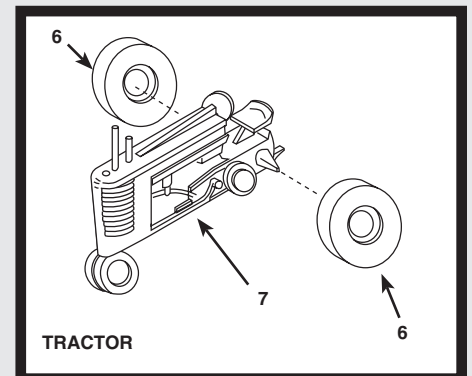
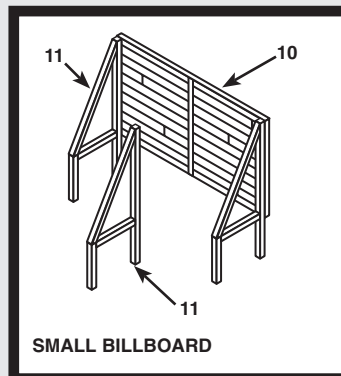
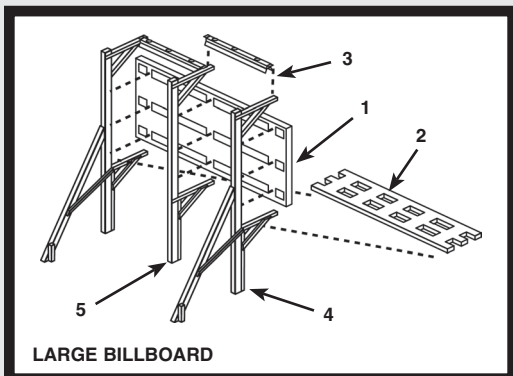
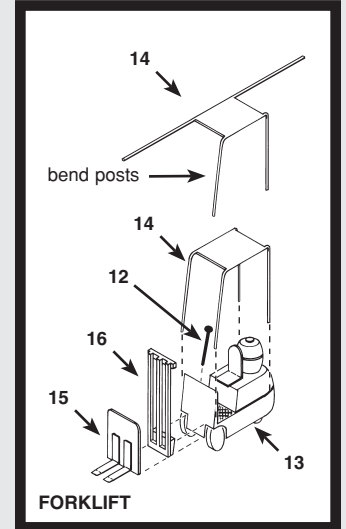
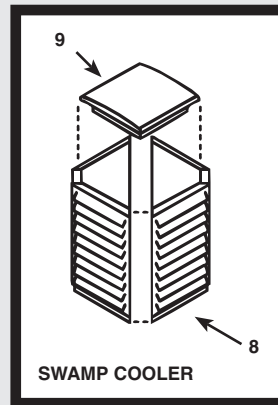
PREPARATION OF METAL CASTINGS

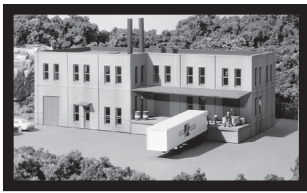
Remove parting lines, flash and stems with a hobby knife, sandpaper or file. Test fit castings.

NOTE: Castings bend easily and should be handled carefully. Straighten bent or warped castings.

Wash all metal castings in soapy water to remove residue caused by molding process. Rinse and allow parts to dry.

Plan ahead. It is often easier to paint certain castings before assembly. We recommend using a primer coat and then painting castings with a high quality, flat paint. Scrape paint from glue points before gluing and touch up paint if necessary after assembly. Glue castings together with a fast-setting epoxy or cyanoacrylate adhesive such as super glue. (A thick, gap-filling cyanoacrylate is recommended.)





#6 Kitt Transfer



#4 E-Z Loan Pawn Shop



#1 General Store



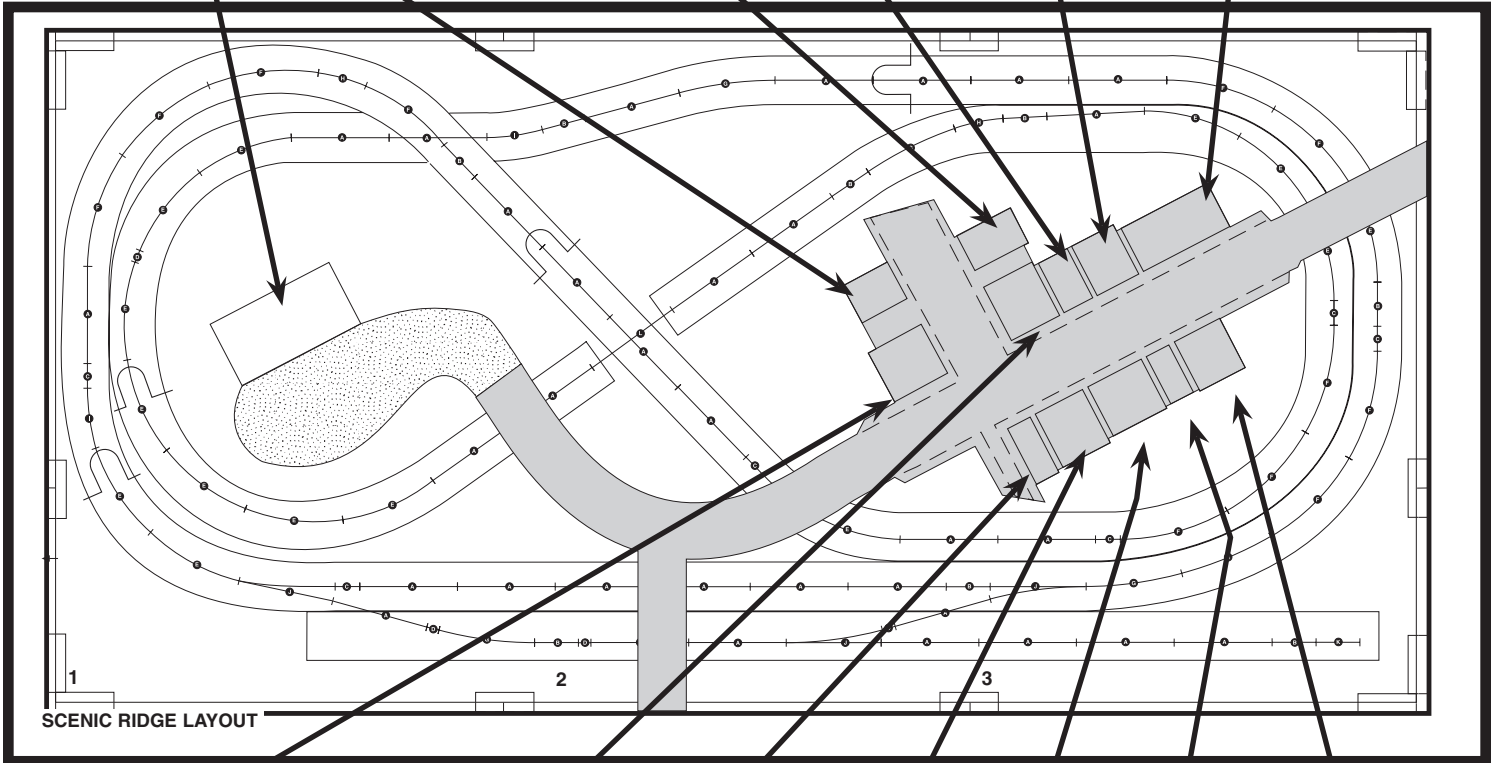
#2 Dew Drop Inn



#16 Best Rest Hotel



#12 Café



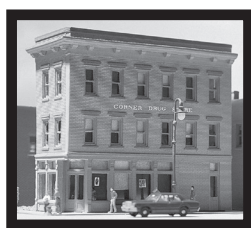
#14 Shotz Guns & Tackle



#11 Pioneer Press



#13 Baxter Hardware



#7 Cooke's Drug



#8 Bank & Trust Co.



#15 Reel Theater



#3 Otto's Parts

KIT #1 GENERAL STORE

INSTRUCTIONS

Read through instructions before beginning construction.

Use plastic cement to glue parts. Plastic cement works by dissolving the surface of plastic and welding parts together. Be careful to avoid contact with detail on parts and visible areas on Clear Window Material. Always allow glue to set thoroughly before moving on to next construction step.

Prepare Building Parts

Wash Walls, Door and Chimney Backs in warm, soapy water, rinse and let dry. Use a hobby knife and sandpaper to remove excess plastic (tabs and flash) that occurred during the molding process. **Tabs:** Score flush with part, snap off and sand smooth. **Flash:** Lightly scrape along edges to remove debris and sand smooth. Face cutting edge of blade opposite the scraping direction to avoid cutting into detail on Walls.

Square Draft Angles

Wall edges are angled (draft angles) to make removal from mold easier. Draft angles need to be sanded square to allow for proper assembly and a flush fit with adjoining Walls. To square edges, thumbtack a piece of 120-grit sandpaper to a board and draw Wall back and forth evenly on sandpaper until edge is square and level (Fig. 1). Edges to be sanded square do not have brick detail and are marked "A" (Fig. 2).

Door Side Panels

1. Using Side Panel Material (white styrene strip), cut two Entry Door Side Panels (1-7) the same height as Entry Door (1-8) (Fig. 4).
2. Glue Side Panels to Entry Door (Fig. 2 and 4).
3. Glue Front Door Assembly to back of Entry Wall (1-1) (Fig. 4).

Chimney Backs

The Roof (1-9) will be glued to the bottom of the four Chimney Backs. The Roof slopes downward from the front of the building to the rear. The bottom of the Chimney Backs slope in the same direction. Chimney Backs (1-5) slope downward from left to right and Chimney Backs (1-6) slope the opposite way.

1. File draft angle off bottom of Chimney Backs so top of Roof will glue flush.
2. Glue Chimney Backs in place. When glue is set, file tops flat.

Wall Assembly

1. Glue Front Wall (1-1) to Side Wall (1-2). Align brick courses while keeping bottom of Walls as level as possible and corners square. **TIP!** Use styrene Roof as a square.
2. Glue Back Wall (1-3) to Side Wall (1-4).
3. Glue Wall Assemblies to each other. Use rubber bands to hold building together while making final adjustments and drying.

Roof

1. To make Roof (1-9), place building on Roof Material (white styrene) and trace around interior walls. Cut out and trim to fit as needed.
2. Prime Roof and paint grimy black before installing.

TIP! Cut small squares of scrap Roof Material and glue to Roof to simulate roof hatches. Small details add realism and interest to your building. Paint before gluing in place.

Level Building

On thumbtacked piece of 120-grit sandpaper, carefully sand bottom of building in a circular motion to level bottom edges so it will sit level on layout.

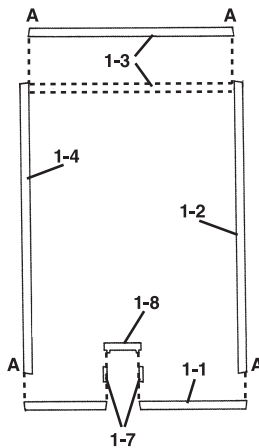


Fig. 2
Plan (View from Top)

Fig. 1
Sand edges square

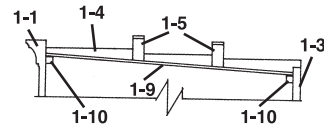
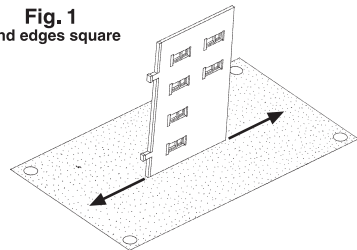


Fig. 3
Cross Section

DRAWINGS NOT
TO SCALE

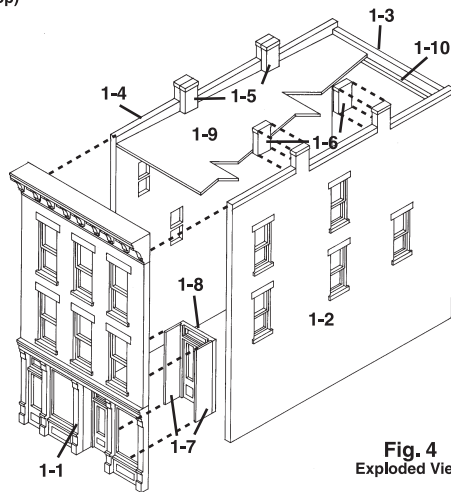


Fig. 4
Exploded View

(instructions continued on back)

N SCALE

(instructions continued)

Paint Building and Details

Apply a thin coat of primer before painting and let dry.

Airbrush: Use solvent-based, flat finish enamel paint.

Hand-brush: Use water-soluble, flat finish acrylic paint.

Aerosol: Use flat finish spray paint.

We recommend natural brick colors such as rust, tan or other earth tones. Paint door and window trim the same color as the brick or a contrasting color.

Weathering Tips

Add a realistic mortar-look to brickwork by painting on a concrete mortar wash (formula follows). Using a paintbrush, dab on small amounts of wash until desired look is achieved. Sponge off excess.

Formula: Mix 1-part acrylic paint (color suggestions: concrete or aged concrete), 12-parts rubbing alcohol, 8-parts water and 1 drop liquid dish soap.

Airbrush: Lightly spray thinned flat black paint (color suggestion: grimy black) to areas where natural discoloration can occur (near windows, chimneys, etc.).

Chalk: Rub a dark color of pastel chalk (color suggestions: gray, black, brown, etc.) on sandpaper to create a chalk dust. Using a paintbrush, dab chalk dust where discoloration can occur.

Install Windows

1. Cut Clear Window Material (clear styrene) to size to fit over an entire area of window openings at one time.
2. Center Window Material over windows on inside of building and carefully dab a small amount of glue around edges.
3. Repeat for each set of window openings.

Install Roof

1. Install Roof (1-9) through bottom of building and glue to bottom of Chimney Backs (Fig. 3).
2. Cut four Roof Supports (1-10) to fit the length of Walls (1-1) and (1-3).
3. Glue two Roof Supports to the bottom of Roof and along Front Wall and two to the bottom of Roof and along Rear Wall (Fig. 3).

Finishing Touch

Give your building the illusion of being occupied. Place a piece of black construction paper diagonally from corner-to-corner inside the building to block the light.

Create interest on your layout. Add lights to your buildings quickly and easily using the Woodland Scenics® Just Plug® Lighting System.

Model making product. Not a toy! Not suitable for children under 14 years! / Produit pour le modélisme. Pas un jouet! Pas adapté aux enfants de moins de 14 ans! / Producto para modelismo. No es un juguete! No adecuado para niños menores de 14 años! / Modellbauartikel. Kein Spielzeug! Nicht geeignet für Kinder unter 14!



MODELING AND CARE INFORMATION:

This kit suggests the use of materials that may stain or cause damage. Take care to cover project area and clothing appropriately. Follow recommendations for use and cleanup.



CAUTION: Cutting tool recommended.

Use with care. / **MISE EN GARDE :** Outil de coupe recommandé. Utilisation avec soin. / **PRECAUCIÓN:** Herramienta cortante recomendada. Uso con cuidado. / **VORSICHT:** Schneidwerkzeug empfohlen. Gebrauch sorgfältig.

XINSTS1 Made in USA P11 ©1999 O CO



Kit Contents

4 Walls, 1 Door, 1 Side Panel Material, 1 sheet Roof Material, 2 Roof Support Materials, 4 Chimney Backs, 3 sheets Clear Window Material, Instructions

DETAILS, VEHICLE, FIGURES,
STREETLIGHT AND DECALS
NOT INCLUDED

**KIT #1
GENERAL STORE**
1 1/2 in W x 3 in D x 3 in H
(4.12 cm x 7.62 cm x 7.62 cm)

WOODLAND SCENICS®

Manufactured by **WOODLAND®**
PO BOX 98, LINN CREEK, MO 65052
woodlandscenics.com

KIT #2 DEW DROP INN BAR

INSTRUCTIONS

Read through instructions before beginning construction.

Use plastic cement to glue parts. Plastic cement works by dissolving the surface of plastic and welding parts together. Be careful to avoid contact with detail on parts and visible areas on Clear Window Material. Always allow glue to set thoroughly before moving on to next construction step.

Prepare Building Parts

Wash Walls, Door and Chimney Backs in warm, soapy water, rinse and let dry. Use a hobby knife and sandpaper to remove excess plastic (tabs and flash) that occurred during the molding process. **Tab:** Score flush with part, snap off and sand smooth.

Flash: Lightly scrape along edges to remove debris and sand smooth. Face cutting edge of blade opposite the scraping direction to avoid cutting into detail on Walls.

Square Draft Angles

Wall edges are angled (draft angles) to make removal from mold easier. Draft angles need to be sanded square to allow for proper assembly and a flush fit with adjoining Walls. To square edges, thumbtack a piece of 120-grit sandpaper to a board and draw Wall back and forth evenly on sandpaper until edge is square and level (Fig. 1). Edges to be sanded square do not have brick detail and are marked "A" (Fig. 2).

Door Side Panels

- Using Side Panel Material (white styrene strip), cut two Entry Door Side Panels (2-7) the same height as Entry Door (2-8) (Fig. 4).
- Glue Side Panels to Entry Door (Fig. 2 and 4).
- Glue Front Door Assembly to back of Entry Wall (2-1) (Fig. 4).

Chimney Backs

The Roof (2-9) will be glued to the bottom of the four Chimney Backs. The Roof slopes downward from the front of the building to the rear. The bottom of the Chimney Backs slope in the same direction. Chimney Backs (2-5) slope downward from left to right and Chimney Backs (2-6) slope the opposite way.

- File draft angle off bottom of Chimney Backs so top of Roof will glue flush.
- Glue Chimney Backs in place. When glue is set, file tops flat.

Wall Assembly

- Glue Front Wall (2-1) to Side Wall (2-2). Align brick courses while keeping bottom of Walls as level as possible and corners square. **TIP!** Use styrene Roof as a square.
- Glue Back Wall (2-3) to Side Wall (2-4).
- Glue Wall Assemblies to each other. Use rubber bands to hold building together while making final adjustments and drying.

Roof

- To make Roof (2-9), place building on Roof Material (white styrene) and trace around interior walls. Cut out and trim to fit as needed.
 - Prime Roof and paint grimy black before installing.
- TIP!** Cut small squares of scrap Roof Material and glue to Roof to simulate roof hatches. Small details add realism and interest to your building. Paint before gluing in place.

Level Building

On thumbtacked piece of 120-grit sandpaper, carefully sand bottom of building in a circular motion to level bottom edges so it will sit level on layout.

(instructions continued on back)

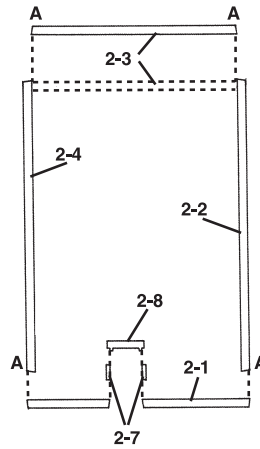


Fig. 2
Plan (View from Top)

Fig. 1
Sand edges square

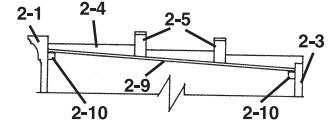
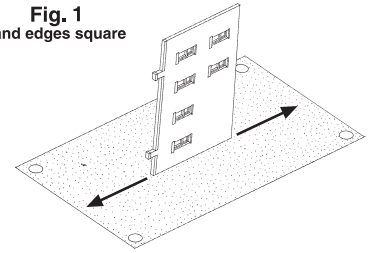


Fig. 3
Cross Section

DRAWINGS NOT
TO SCALE

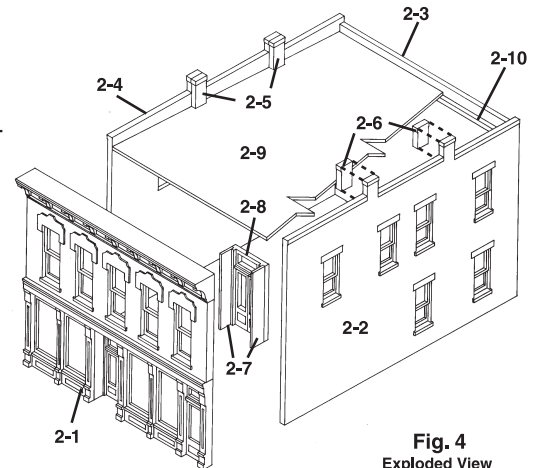


Fig. 4
Exploded View



Kit #2
Dew Drop Inn Bar

N SCALE

(instructions continued)

Paint Building and Details

Apply a thin coat of primer before painting and let dry.

Airbrush: Use solvent-based, flat finish enamel paint.

Hand-brush: Use water-soluble, flat finish acrylic paint.

Aerosol: Use flat finish spray paint.

We recommend natural brick colors such as rust, tan or other earth tones. Paint door and window trim the same color as the brick or a contrasting color.

Weathering Tips

Add a realistic mortar-look to brickwork by painting on a concrete mortar wash (formula follows). Using a paintbrush, dab on small amounts of wash until desired look is achieved. Sponge off excess.

Formula: Mix 1-part acrylic paint (color suggestions: concrete or aged concrete), 12-parts rubbing alcohol, 8-parts water and 1 drop liquid dish soap.

Airbrush: Lightly spray thinned flat black paint (color suggestion: grimy black) to areas where natural discoloration can occur (near windows, chimneys, etc.).

Chalk: Rub a dark color of pastel chalk (color suggestions: gray, black, brown, etc.) on sandpaper to create a chalk dust. Using a paintbrush, dab chalk dust where discoloration can occur.

Install Windows

1. Cut Clear Window Material (clear styrene) to size to fit over an entire area of window openings at one time.
2. Center Window Material over windows on inside of building and carefully dab a small amount of glue around edges.
3. Repeat for each set of window openings.

Install Roof

1. Install Roof (2-9) through bottom of building and glue to bottom of Chimney Backs (Fig. 3).
2. Cut four Roof Supports (2-10) to fit the length of Walls (2-1) and (2-3).
3. Glue two Roof Supports to the bottom of Roof and along Front Wall and two to the bottom of Roof and along Rear Wall (Fig. 3).

Finishing Touch

Give your building the illusion of being occupied. Place a piece of black construction paper diagonally from corner-to-corner inside the building to block the light.

Create interest on your layout. Add lights to your buildings quickly and easily using the Woodland Scenics® Just Plug® Lighting System.

Model making product. Not a toy! Not suitable for children under 14 years! /
Produit pour le modélisme. Pas un jouet! Pas adapté aux enfants de moins de 14 ans! /
Producto para modelismo. No es un juguete! No adecuado para niños menores de 14 años! /
Modellbauartikel. Kein Spielzeug! Nicht geeignet für Kinder unter 14!



MODELING AND CARE INFORMATION:

This kit suggests the use of materials that may stain or cause damage. Take care to cover project area and clothing appropriately. Follow recommendations for use and cleanup.



CAUTION: Cutting tool recommended.

Use with care. / **MISE EN GARDE :** Outil de coupe recommandé. Utilisation avec soin. / **PRECAUCIÓN:** Herramienta cortante recomendada. Uso con cuidado. / **VORSICHT:** Schneidwerkzeug empfohlen. Gebrauch sorgfältig.

XINSTR2 Made in USA P11 ©1999 O CO



N SCALE
STRUCTURE KIT



DETAILS, VEHICLE, FIGURES AND
DECALS NOT INCLUDED

Kit Contents

4 Walls, 1 Door, 1 Side Panel Material, 1 sheet Roof Material, 2 Roof Support Materials, 4 Chimney Backs, 3 sheets Clear Window Material, Instructions

KIT #2 DEW DROP INN BAR

2 7/16 in W x 3 1/4 in D x 2 1/4 in H
(6.19 cm x 8.25 cm x 5.71 cm)

WOODLAND SCENICS®

Manufactured by **WOODLAND®**
PO BOX 98, LINN CREEK, MO 65052
woodlandscenics.com

KIT #3 OTTO'S PARTS

INSTRUCTIONS

Read through instructions before beginning construction.

Use plastic cement to glue parts. Plastic cement works by dissolving the surface of plastic and welding parts together. Be careful to avoid contact with detail on parts and visible areas on Clear Window Material. Always allow glue to set thoroughly before moving on to next construction step.

Prepare Building Parts

Wash Walls, Door and Chimney Backs in warm, soapy water, rinse and let dry. Use a hobby knife and sandpaper to remove excess plastic (tabs and flash) that occurred during the molding process. **Tab:** Score flush with part, snap off and sand smooth. **Flash:** Lightly scrape along edges to remove debris and sand smooth. Face cutting edge of blade opposite the scraping direction to avoid cutting into detail on Walls.

Square Draft Angles

Wall edges are angled (draft angles) to make removal from mold easier. Draft angles need to be sanded square to allow for proper assembly and a flush fit with adjoining Walls. To square edges, thumbtack a piece of 120-grit sandpaper to a board and draw Wall back and forth evenly on sandpaper until edge is square and level (**Fig. 1**). Edges to be sanded square do not have brick detail and are marked "A" (**Fig. 2**).

Door Side Panels

1. Using Side Panel Material (white styrene strip), cut two Entry Door Side Panels (3-6) the same height as Entry Door (3-7) (**Fig. 4**).
2. Glue Side Panels to Entry Door (**Fig. 2 and 4**).
3. Glue Front Door Assembly to back of Entry Wall (3-1) (**Fig. 4**).

Wall Assembly

1. Glue Front Wall (3-1) to Side Wall (3-2). Align brick courses while keeping bottom of Walls as level as possible and corners square. **TIP!** Use styrene Roof as a square.
2. Glue Back Wall (3-3) to Side Wall (3-4).
3. Glue Wall Assemblies to each other. Use rubber bands to hold building together while making final adjustments and drying.

Roof Supports

Cut and glue Roof Supports (3-9) level around interior of walls approximately 3/16" down from top of Back Wall (**Fig. 3 and 4**).

Chimney

Glue Chimney Halves (3-5) together. When completely dry, file flat and square.

Roof

1. To make Roof (3-8), place building on Roof Material (white styrene) and trace around interior walls. Cut out and trim to fit as needed.
 2. Prime Roof and paint grimy black before installing.
- TIP!** Cut small squares of scrap Roof Material and glue to Roof to simulate roof hatches. Small details add realism and interest to your building. Paint before gluing in place.

Level Building

On thumbtacked piece of 120-grit sandpaper, carefully sand bottom of building in a circular motion to level bottom edges so it will sit level on layout.

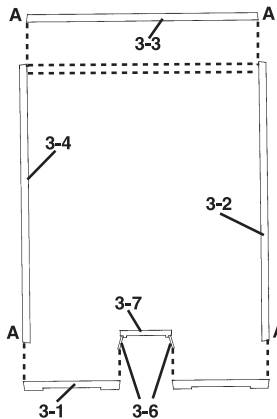


Fig. 2
Plan (View from Top)

Fig. 1
Sand edges square

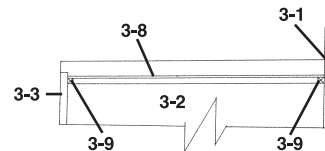
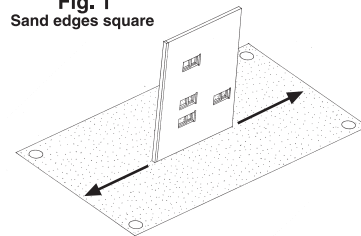


Fig. 3
Cross Section

DRAWINGS NOT TO SCALE

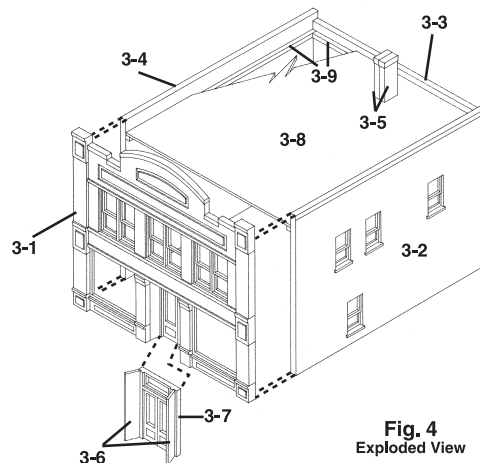


Fig. 4
Exploded View

(instructions continued on back)

N SCALE

(instructions continued)

Paint Building and Details

Apply a thin coat of primer before painting and let dry.

Airbrush: Use solvent-based, flat finish enamel paint.

Hand-brush: Use water-soluble, flat finish acrylic paint.

Aerosol: Use flat finish spray paint.

We recommend natural brick colors such as rust, tan or other earth tones. Paint door and window trim the same color as the brick or a contrasting color.

Weathering Tips

Add a realistic mortar-look to brickwork by painting on a concrete mortar wash (formula follows). Using a paintbrush, dab on small amounts of wash until desired look is achieved. Sponge off excess.

Formula: Mix 1-part acrylic paint (color suggestions: concrete or aged concrete), 12-parts rubbing alcohol, 8-parts water and 1 drop liquid dish soap.

Airbrush: Lightly spray thinned flat black paint (color suggestion: grimy black) to areas where natural discoloration can occur (near windows, chimneys, etc.).

Chalk: Rub a dark color of pastel chalk (color suggestions: gray, black, brown, etc.) on sandpaper to create a chalk dust. Using a paintbrush, dab chalk dust where discoloration can occur.

Install Windows

1. Cut Clear Window Material (clear styrene) to size to fit over an entire area of window openings at one time.
2. Center Window Material over windows on inside of building and carefully dab a small amount of glue around edges.
3. Repeat for each set of window openings.

Install Roof and Chimney

1. Glue Roof to Roof Supports (Fig. 4).
2. Position and glue Chimneys where desired.

Finishing Touch

Give your building the illusion of being occupied. Place a piece of black construction paper diagonally from corner-to-corner inside the building to block the light.

Create interest on your layout. Add lights to your buildings quickly and easily using the Woodland Scenics® Just Plug® Lighting System.

Model making product. Not a toy! Not suitable for children under 14 years! / Produit pour le modélisme. Pas un jouet! Pas adapté aux enfants de moins de 14 ans! / Producto para modelismo. No es un juguete! No adecuado para niños menores de 14 años! / Modellbauartikel. Kein Spielzeug! Nicht geeignet für Kinder unter 14!



MODELING AND CARE INFORMATION:

This kit suggests the use of materials that may stain or cause damage. Take care to cover project area and clothing appropriately. Follow recommendations for use and cleanup.



CAUTION: Cutting tool recommended.

Use with care. / **MISE EN GARDE :** Outil de coupe recommandé. Utilisation avec soin. / **PRECAUCIÓN:** Herramienta cortante recomendada. Uso con cuidado. / **VORSICHT:** Schneidwerkzeug empfohlen. Gebrauch sorgfältig.

XINSTSR3 Made in USA P11 ©1999 O CO



Kit Contents

4 Walls, 1 Door, 1 Side Panel Material, 1 sheet Roof Material, 4 Roof Support Materials, 2 Chimney Halves, 3 sheets Clear Window Material, Instructions

DETAILS, VEHICLE, FIGURES,
STREETLIGHT AND DECALS
NOT INCLUDED

KIT #3

OTTO'S PARTS

2½ in W x 3 in D x 2½ in H
(6.66 cm x 7.62 cm x 6.35 cm)

WOODLAND SCENICS®

Manufactured by **WOODLAND®**
PO BOX 98, LINN CREEK, MO 65052
woodlandscenics.com

KIT #4 E-Z LOAN PAWN SHOP

INSTRUCTIONS

Read through instructions before beginning construction.

Use plastic cement to glue parts. Plastic cement works by dissolving the surface of plastic and welding parts together. Be careful to avoid contact with detail on parts and visible areas on Clear Window Material. Always allow glue to set thoroughly before moving on to next construction step.

Prepare Building Parts

Wash Walls, Door and Chimney Backs in warm, soapy water, rinse and let dry. Use a hobby knife and sandpaper to remove excess plastic (tabs and flash) that occurred during the molding process. **Tab:** Score flush with part, snap off and sand smooth.

Flash: Lightly scrape along edges to remove debris and sand smooth. Face cutting edge of blade opposite the scraping direction to avoid cutting into detail on Walls.

Square Draft Angles

Wall edges are angled (draft angles) to make removal from mold easier. Draft angles need to be sanded square to allow for proper assembly and a flush fit with adjoining Walls. To square edges, thumbtack a piece of 120-grit sandpaper to a board and draw Wall back and forth evenly on sandpaper until edge is square and level (**Fig. 1**). Edges to be sanded square do not have brick detail and are marked "A" (**Fig. 2**).

Door Side Panels

1. Using Side Panel Material (white styrene strip), cut two Entry Door Side Panels (4-6) the same height as Entry Door (4-7) (**Fig. 4**).
2. Glue Side Panels to Entry Door (**Fig. 2 and 4**).
3. Glue Front Door Assembly to back of Front Wall (4-1) (**Fig. 4**).

Chimney Backs

The Roof (4-8) will be glued to the bottom of the four Chimney Backs (4-5) (**Fig. 3**).

1. File draft angle off bottom of Chimney Backs so top of Roof will set flush.
2. Glue Chimney Backs in place (**Fig. 4**). When glue is set, file tops flat.

Wall Assembly

1. Glue Front Wall (4-1) to Side Wall (4-2). Align brick courses while keeping bottom of Walls as level as possible and corners square. **TIP!** Use styrene Roof as a square.
2. Glue Back Wall (4-3) to Side Wall (4-4).
3. Glue Wall Assemblies to each other. Use rubber bands to hold building together while making final adjustments and drying.

Roof

1. To make Roof (4-8), place building on Roof Material (white styrene) and trace around interior walls. Cut out and trim to fit as needed.
 2. Prime Roof and paint grimy black before installing.
- TIP!** Cut small squares of scrap Roof Material and glue to Roof to simulate roof hatches. Small details add realism and interest to your building. Paint before gluing in place.

Level Building

On thumbtacked piece of 120-grit sandpaper, carefully sand bottom of building in a circular motion to level bottom edges so it will sit level on layout.

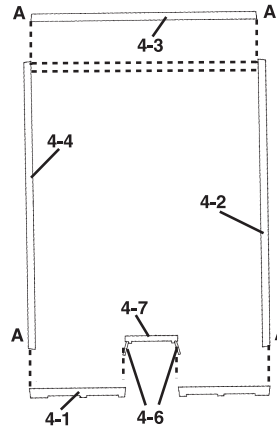


Fig. 2
Plan (View from Top)

Fig. 1
Sand edges square

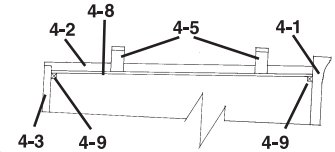
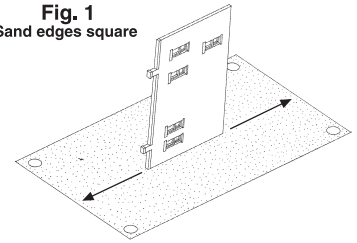


Fig. 3
Cross Section

DRAWINGS NOT TO SCALE

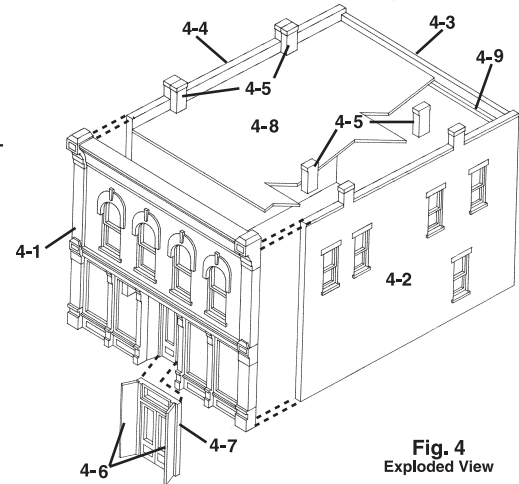


Fig. 4
Exploded View

(instructions continued on back)

N SCALE

(instructions continued)

Paint Building and Details

Apply a thin coat of primer before painting and let dry.

Airbrush: Use solvent-based, flat finish enamel paint.

Hand-brush: Use water-soluble, flat finish acrylic paint.

Aerosol: Use flat finish spray paint.

We recommend natural brick colors such as rust, tan or other earth tones. Paint door and window trim the same color as the brick or a contrasting color.

Weathering Tips

Add a realistic mortar-look to brickwork by painting on a concrete mortar wash (formula follows). Using a paintbrush, dab on small amounts of wash until desired look is achieved. Sponge off excess.

Formula: Mix 1-part acrylic paint (color suggestions: concrete or aged concrete), 12-parts rubbing alcohol, 8-parts water and 1 drop liquid dish soap.

Airbrush: Lightly spray thinned flat black paint (color suggestion: grimy black) to areas where natural discoloration can occur (near windows, chimneys, etc.).

Chalk: Rub a dark color of pastel chalk (color suggestions: gray, black, brown, etc.) on sandpaper to create a chalk dust. Using a paintbrush, dab chalk dust where discoloration can occur.

Install Windows

1. Cut Clear Window Material (clear styrene) to size to fit over an entire area of window openings at one time.
2. Center Window Material over windows on inside of building and carefully dab a small amount of glue around edges.
3. Repeat for each set of window openings.

Install Roof

1. Install Roof (4-8) through bottom of building and glue to bottom of Chimney Backs (Fig. 3).
2. Cut four Roof Supports (4-9) to fit the length of Walls (4-1) and (4-3).
3. Glue two Roof Supports to the bottom of Roof and along Front Wall and two to the bottom of Roof and along Rear Wall (Fig. 3).

Finishing Touch

Give your building the illusion of being occupied. Place a piece of black construction paper diagonally from corner-to-corner inside the building to block the light.

Create interest on your layout. Add lights to your buildings quickly and easily using the Woodland Scenics® Just Plug® Lighting System.

Model making product. Not a toy! Not suitable for children under 14 years! / Produit pour le modélisme. Pas un jouet! Pas adapté aux enfants de moins de 14 ans! / Producto para modelismo. No es un juguete! No adecuado para niños menores de 14 años! / Modellbauartikel. Kein Spielzeug! Nicht geeignet für Kinder unter 14!



MODELING AND CARE INFORMATION:

This kit suggests the use of materials that may stain or cause damage. Take care to cover project area and clothing appropriately. Follow recommendations for use and cleanup.



CAUTION: Cutting tool recommended.

Use with care. / **MISE EN GARDE :** Outil de coupe recommandé. Utilisation avec soin. / **PRECAUCIÓN:** Herramienta cortante recomendada. Uso con cuidado. / **VORSICHT:** Schneidwerkzeug empfohlen. Gebrauch sorgfältig.

XINSTR4 Made in USA P11 ©1999 O CO



Kit Contents

4 Walls, 1 Door, 1 Side Panel Material, 1 sheet Roof Material, 2 Roof Support Materials, 4 Chimney Backs, 3 sheets Clear Window Material, Instructions

DETAILS, VEHICLES, FIGURES,
STREETLIGHT, FENCE AND DECALS
NOT INCLUDED

KIT #4 E-Z LOAN PAWN SHOP

2¹/₁₆ in W x 3¹/₈ in D x 2¹/₂ in H
(6.5 cm x 7.93 cm x 6.35 cm)

WOODLAND SCENICS®

Manufactured by **WOODLAND®**
PO BOX 98, LINN CREEK, MO 65052
woodlandscenics.com

KIT #6 KITT TRANSFER

INSTRUCTIONS

Read through instructions before beginning construction.

Use plastic cement to glue parts. Plastic cement works by dissolving the surface of plastic and welding parts together. Be careful to avoid contact with detail on parts and visible areas on Clear Window Material. Always allow glue to set thoroughly before moving on to next construction step.

Prepare Walls

Wash Walls, Chimney Tubes and Dock Platform in warm, soapy water, rinse and let dry. Use a hobby knife and sandpaper to remove excess plastic (tabs and flash) that occurred during the molding process. **Tab:** Score flush with part, snap off and sand smooth. **Flash:** Lightly scrape along edges to remove debris and sand smooth. Face cutting edge of blade opposite the scraping direction to avoid cutting into detail on Walls.

Square Draft Angles

Wall edges are angled (draft angles) to make removal from mold easier. Draft angles need to be sanded square to allow for proper assembly and a flush fit with adjoining Walls. To square edges, thumbtack a piece of 120-grit sandpaper to a board and draw Wall back and forth evenly on sandpaper until edge is square and level (Fig. 1). Wall edges that need to be sanded square do not have brick detail.

1. Sand both edges of Walls (6-4), (6-6) and (6-2).
2. Sand both edges of short Dock Wall (6-8) and left edge only of long Dock Wall (6-7).
3. Sand top of Dock Walls square to assure a flush fit with bottom of Dock Platform (6-9).

Assemble Wall Sections

During wall assembly, align brick courses while keeping bottom of walls as level as possible. Make sure corners are square.

1. Glue Walls (6-1), (6-2) and (6-3). Do not confuse ground-level Wall (6-1) with dock-level Wall (6-3). Recess Wall (6-2) on backside of Wall (6-1) approximately 1/32" for pilaster offset. Wall (6-2) sets against backside of (6-1) and outside of (6-3).
2. Glue Walls (6-4) and (6-5). Then, glue Wall (6-6) to Wall (6-5). Recess end Walls (6-4) and (6-6) approximately 1/32" in for pilaster offset. Walls (6-4) and (6-6) set against backside of (6-5).

Test Fit and Assemble Building

1. Test fit Wall Sections (6-4), (6-5), (6-6) with Wall Sections (6-1), (6-2), (6-3). If the building is not square, determine which Wall (6-4) or (6-6) is too long and sand outside edge slightly. When building is square, apply glue along adjoining seams. Let dry.
2. Test fit Dock Walls (6-7) and (6-8), recessing them approximately 1/32". Sand edges as needed and glue in place. Let dry.
3. Test fit Dock Platform (6-9). Trim as needed to fit around pilasters. File ejector pin mark flush. Glue in place. Let dry.

Main Roof, Dock Roof and Roof Supports

1. To make Roof (6-10), place building on Roof Material (white styrene) and trace around interior walls. Cut out and trim to fit as needed.
2. Use corner cut out of Roof Material for Dock Roof (6-11). It is approximately the same size as the Dock Platform. Test fit and trim as needed. Trim to fit around pilasters.
3. Prime and paint Main Roof and Dock Roof grimy black and set aside to dry.
4. Glue Roof Supports (6-13) in place around interior walls about 1/4" down from top of Walls.

TIPS! Cut small squares of scrap Roof Material and glue to Roof to simulate roof hatches. Cut scrap Roof Material to add an overhang over entrance door on Wall (6-1). These are small details that add realism and interest to your building. Paint details before gluing in place.

Level Building

On thumbtacked piece of 120-grit sandpaper, carefully sand bottom of building in a circular motion to level bottom edges so it will sit level on layout.

Paint Building and Details

Airbrush: Use solvent-based, flat finish enamel paint.

Hand-brush: Use water-soluble, flat finish acrylic paint.

Aerosol: Spray paints in flat finish can also be used.

We recommend natural brick colors such as rust, tan or other earth tones. Paint door and window trim the same color as the brick or a contrasting color.

Weathering Tips

Add a realistic mortar-look to brickwork by painting on a concrete mortar wash (formula follows). Using a paintbrush, dab on small amounts of wash until desired look is achieved. Sponge off excess.

Formula: Mix 1-part acrylic paint (color suggestions: concrete or aged concrete), 12-parts rubbing alcohol, 8-parts water and 1 drop liquid dish soap.

Airbrush: Lightly spray thinned flat black paint (color suggestion: grimy black) to areas where natural discoloration can occur (near windows, chimneys, etc.).

Chalk: Rub a dark color of pastel chalk (color suggestions: gray, black, brown, etc.) on sandpaper to create a chalk dust. Using a paintbrush, dab chalk dust where discoloration can occur.

Install Windows

1. Cut Clear Window Material (clear styrene) to size to fit over an entire area of window openings at one time.
2. Center Window Material over windows on inside of building and carefully dab a small amount of glue around edges.
3. Repeat for each set of window openings.

Install Roof and Dock

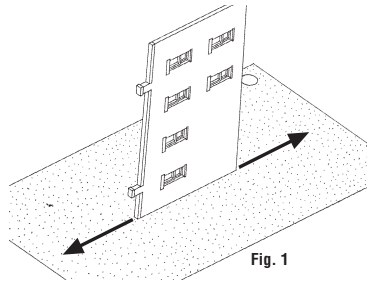
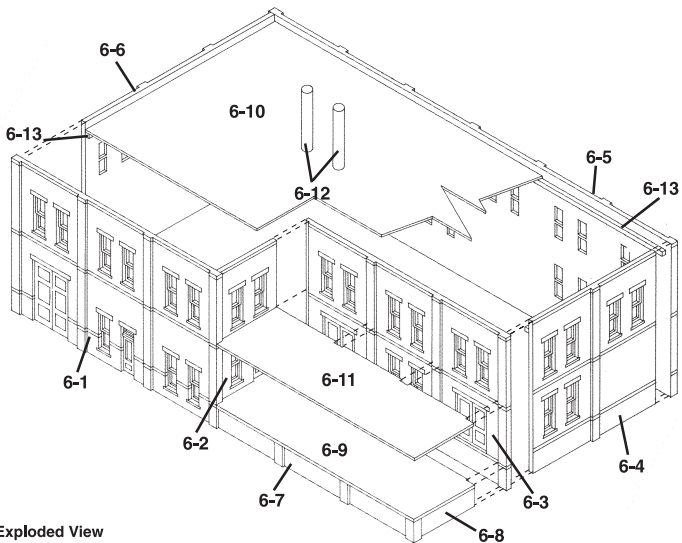
1. Glue Main Roof to Roof Supports (6-13).
2. Glue Dock Platform and Dock Roof in place.
3. Position and glue Chimneys (2x) (6-12) in place where desired.

Finishing Touches

Give your building the illusion of being occupied. Place a piece of black construction paper diagonally from corner-to-corner inside the building to block the light.

Create interest on your layout.

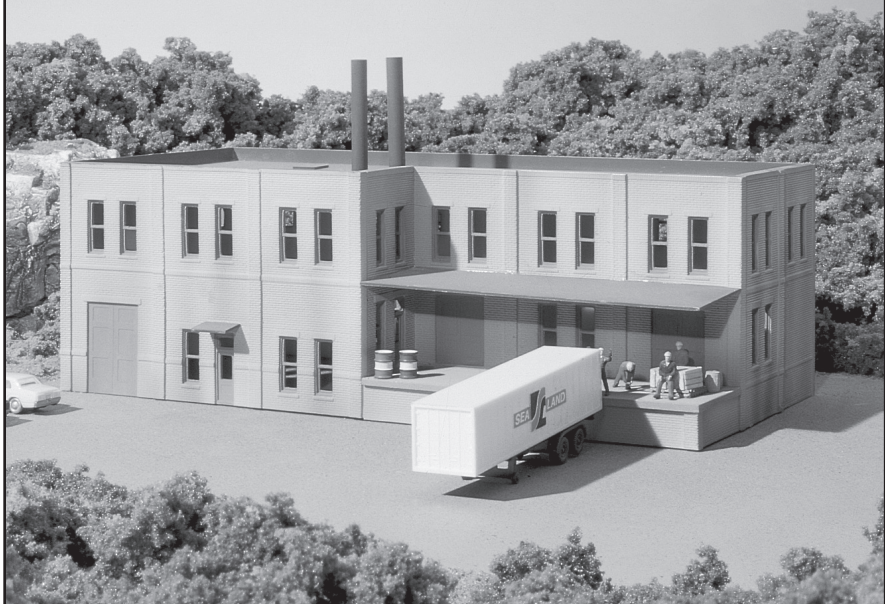
Add lights to your buildings quickly and easily using the Woodland Scenics® Just Plug® Lighting System.





**WOODLAND
SCENICS®**

**N SCALE
STRUCTURE KIT**



Kit Contents

6 Walls, 1 sheet Roof Material, 3 Roof Support Materials, 2 Chimney Tubes, 1 Dock Platform, 2 Dock Walls, 2 sheets Clear Window Material, Instructions

DETAILS, LANDSCAPE, VEHICLES, FIGURES AND DECALS NOT INCLUDED

KIT #6

Kitt Transfer

7 5/8 in W x 3 3/4 in D x 2 1/2 in H
(19.3 cm x 9.52 cm x 6.35 cm)

Model making product. Not a toy! Not suitable for children under 14 years! / Produit pour le modélisme. Pas un jouet! Pas adapté aux enfants de moins de 14 ans! / Producto para modelismo. No es un juguete! No adecuado para niños menores de 14 años! / Modellbauartikel. Kein Spielzeug! Nicht geeignet für Kinder unter 14!



MODELING AND CARE INFORMATION: This kit suggests the use of materials that may stain or cause damage. Take care to cover project area and clothing appropriately. Follow recommendations for use and cleanup.



CAUTION: Cutting tool recommended. Use with care. / **MISE EN GARDE:** Outil de coupe recommandé. Utilisation avec soin. / **PRECAUCIÓN:** Herramienta cortante recomendada. Uso con cuidado. / **VORSICHT:** Schneidwerkzeug empfohlen. Gebrauch sorgfältig.

WOODLAND SCENICS®

Manufactured by **WOODLAND®**
PO BOX 98, LINN CREEK, MO 65052
woodlandscenics.com

XINSTSR6 Made in USA P11 ©1999 O C0

KIT #7 COOKE'S DRUG

INSTRUCTIONS

Read through instructions before beginning construction.

Use plastic cement to glue parts. Plastic cement works by dissolving the surface of plastic and welding parts together. Be careful to avoid contact with detail on parts and visible areas on Clear Window Material. Always allow glue to set thoroughly before moving on to next construction step.

Prepare Building Parts

Wash Walls, Door and Chimney Backs in warm, soapy water, rinse and let dry. Use a hobby knife and sandpaper to remove excess plastic (tabs and flash) that occurred during the molding process. **Tab:** Score flush with part, snap off and sand smooth. **Flash:** Lightly scrape along edges to remove debris and sand smooth. Face cutting edge of blade opposite the scraping direction to avoid cutting into detail on Walls.

Square Draft Angles

Wall edges are angled (draft angles) to make removal from mold easier. Draft angles need to be sanded square to allow for proper assembly and a flush fit with adjoining Walls. To square edges, thumbtack a piece of 120-grit sandpaper to a board and draw Wall back and forth evenly on sandpaper until edge is square and level (**Fig. 1**). Edges to be sanded square do not have brick detail and are marked "A" (**Fig. 2**).

Wall Assembly

1. Glue Front Wall (7-1) to Side Wall (7-2). Align brick courses while keeping bottom of Walls as level as possible and corners square. **TIP!** Use styrene Roof as a square.
2. Glue Back Wall (7-3) to Side Wall (7-4).
3. Glue Wall Assemblies to each other. Use rubber bands to hold building together while making final adjustments and drying.

Install Cornice

1. Test fit Cornice (7-5) in grooves on Walls (7-1) and (7-2).
2. Sand if necessary for proper fit and glue in place.

Install Door

1. Sand tapered edges of Door (7-7).
2. Test fit and glue in place.

Chimney Backs

The Roof (7-8) will be glued to the bottom of the two Chimney Backs (7-6).

1. File draft angle off bottom of Chimney Backs so top of Roof will set flush.
2. Glue Chimney Backs in place. When glue is set, file tops flat.

Roof

1. To make Roof (7-8), place building on Roof Material (white styrene) and trace around interior walls. Cut out and trim to fit as needed.
 2. Prime Roof and paint grimy black before installing.
- TIP!** Cut small squares of scrap Roof Material and glue to Roof to simulate roof hatches. Small details add realism and interest to your building. Paint before gluing in place.

Level Building

On thumbtacked piece of 120-grit sandpaper, carefully sand bottom of building in a circular motion to level bottom edges so it will sit level on layout.

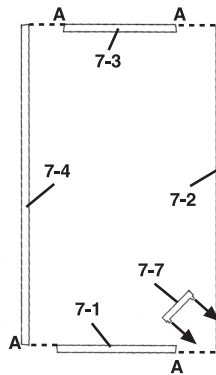


Fig. 2
Plan (View from Top)

Fig. 1
Sand edges square

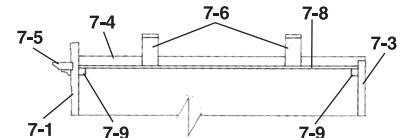
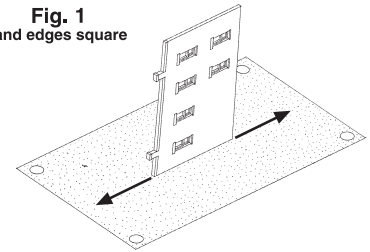


Fig. 3
Cross Section

DRAWINGS NOT TO SCALE

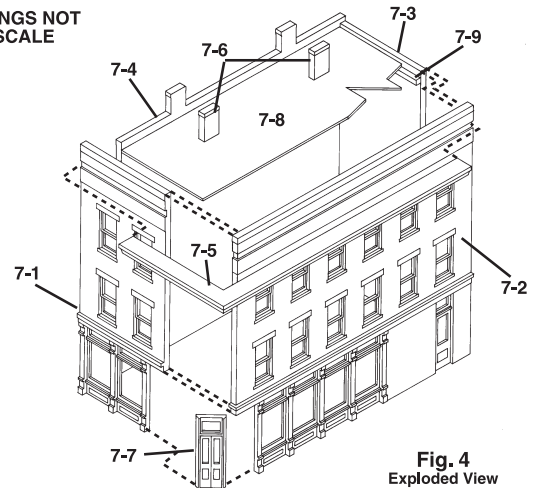


Fig. 4
Exploded View

(instructions continued on back)

N SCALE

(instructions continued)

Paint Building and Details

Apply a thin coat of primer before painting and let dry.

Airbrush: Use solvent-based, flat finish enamel paint.

Hand-brush: Use water-soluble, flat finish acrylic paint.

Aerosol: Use flat finish spray paint.

We recommend natural brick colors such as rust, tan or other earth tones. Paint door and window trim the same color as the brick or a contrasting color.

Weathering Tips

Add a realistic mortar-look to brickwork by painting on a concrete mortar wash (formula follows). Using a paintbrush, dab on small amounts of wash until desired look is achieved. Sponge off excess.

Formula: Mix 1-part acrylic paint (color suggestions: concrete or aged concrete), 12-parts rubbing alcohol, 8-parts water and 1 drop liquid dish soap.

Airbrush: Lightly spray thinned flat black paint (color suggestion: grimy black) to areas where natural discoloration can occur (near windows, chimneys, etc.).

Chalk: Rub a dark color of pastel chalk (color suggestions: gray, black, brown, etc.) on sandpaper to create a chalk dust. Using a paintbrush, dab chalk dust where discoloration can occur.

Install Windows

1. Cut Clear Window Material (clear styrene) to size to fit over an entire area of window openings at one time.
2. Center Window Material over windows on inside of building and carefully dab a small amount of glue around edges.
3. Repeat for each set of window openings.

Install Roof

1. Install Roof (7-8) through bottom of building and glue to bottom of Chimney Backs (Fig. 3).
2. Cut two Roof Supports (7-9) to fit the length of Walls (7-1) and (7-3).
3. Glue one Roof Support to bottom of Roof and along Front Wall and one to bottom of Roof and along Rear Wall (Fig. 3).

Finishing Touch

Give your building the illusion of being occupied. Place a piece of black construction paper diagonally from corner-to-corner inside the building to block the light.

Create interest on your layout. Add lights to your buildings quickly and easily using the Woodland Scenics® Just Plug® Lighting System.

Model making product. Not a toy! Not suitable for children under 14 years! / Produit pour le modélisme. Pas un jouet! Pas adapté aux enfants de moins de 14 ans! / Producto para modelismo. No es un juguete! No adecuado para niños menores de 14 años! / Modellbauartikel. Kein Spielzeug! Nicht geeignet für Kinder unter 14!



MODELING AND CARE INFORMATION:

This kit suggests the use of materials that may stain or cause damage. Take care to cover project area and clothing appropriately. Follow recommendations for use and cleanup.



CAUTION: Cutting tool recommended.

Use with care. / **MISE EN GARDE :** Outil de coupe recommandé. Utilisation avec soin. / **PRECAUCIÓN:** Herramienta cortante recomendada. Uso con cuidado. / **VORSICHT:** Schneidwerkzeug empfohlen. Gebrauch sorgfältig.

XINSTSR7 Made in USA P11 ©1999 O CO



DETAILS, VEHICLE, FIGURES,
STREETLIGHT AND DECALS
NOT INCLUDED

Kit Contents

4 Walls, 1 Door, 2 Chimney Backs, 1 Cornice,
3 Roof Support Materials, 1 sheet Roof Material,
3 sheets Clear Window Material, Instructions

KIT #7

COOKE'S DRUG

3 3/8 in W x 1 3/8 in D x 3 in H
(8.57 cm x 3.49 cm x 7.62 cm)

WOODLAND SCENICS®

Manufactured by **WOODLAND®**
PO BOX 98, LINN CREEK, MO 65052
woodlandscenics.com

KIT #8 BANK & TRUST CO.

INSTRUCTIONS

Read through instructions before beginning construction.

Use plastic cement to glue parts. Plastic cement works by dissolving the surface of plastic and welding parts together. Be careful to avoid contact with detail on parts and visible areas on Clear Window Material. Always allow glue to set thoroughly before moving on to next construction step.

Prepare Building Parts

Wash Walls, Door and Chimney Backs in warm, soapy water, rinse and let dry. Use a hobby knife and sandpaper to remove excess plastic (tabs and flash) that occurred during the molding process. **Tab:** Score flush with part, snap off and sand smooth. **Flash:** Lightly scrape along edges to remove debris and sand smooth. Face cutting edge of blade opposite the scraping direction to avoid cutting into detail on Walls.

Square Draft Angles

Wall edges are angled (draft angles) to make removal from mold easier. Draft angles need to be sanded square to allow for proper assembly and a flush fit with adjoining Walls. To square edges, thumbtack a piece of 120-grit sandpaper to a board and draw Wall back and forth evenly on sandpaper until edge is square and level (Fig. 1). Edges to be sanded square do not have brick detail and are marked "A" (Fig. 2).

Door Side Panels

1. Using Side Panel Material (white styrene strip), cut two Entry Door Side Panels (8-7) the same height as Entry Door (8-8) (Fig. 4).
2. Glue Side Panels to Entry Door (Fig. 2 and 4).
3. Glue Front Door Assembly to back of Entry Wall (8-1) (Fig. 4).

Chimney Backs

The Roof (8-9) will be glued to the bottom of the four Chimney Backs. The Roof slopes downward from the front of the building to the rear. The bottom of the Chimney Backs slope in the same direction. Chimney Backs (8-5) slope downward from left to right and Chimney Backs (8-6) slope the opposite way.

1. File draft angle off bottom of Chimney Backs so top of Roof will glue flush.
2. Glue Chimney Backs in place. When glue is set, file tops flat.

Wall Assembly

1. Glue Front Wall (8-1) to Side Wall (8-2). Align brick courses while keeping bottom of Walls as level as possible and corners square. **TIP!** Use styrene Roof as a square.
2. Glue Back Wall (8-3) to Side Wall (8-4).
3. Glue Wall Assemblies to each other. Use rubber bands to hold building together while making final adjustments and drying.

Roof

1. To make Roof (8-9), place building on Roof Material (white styrene) and trace around interior walls. Cut out and trim to fit as needed.
 2. Prime Roof and paint grimy black before installing.
- TIP!** Cut small squares of scrap Roof Material and glue to Roof to simulate roof hatches. Small details add realism and interest to your building. Paint before gluing in place.

Level Building

On thumbtacked piece of 120-grit sandpaper, carefully sand bottom of building in a circular motion to level bottom edges so it will sit level on layout.

(instructions continued on back)

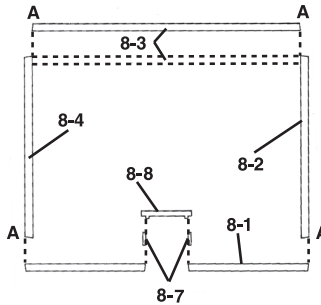


Fig. 2
Plan (View from Top)

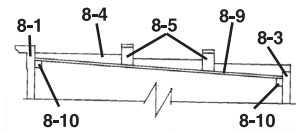


Fig. 3
Cross Section

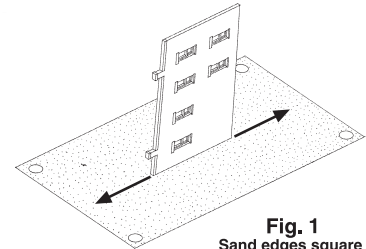


Fig. 1
Sand edges square

DRAWINGS NOT
TO SCALE

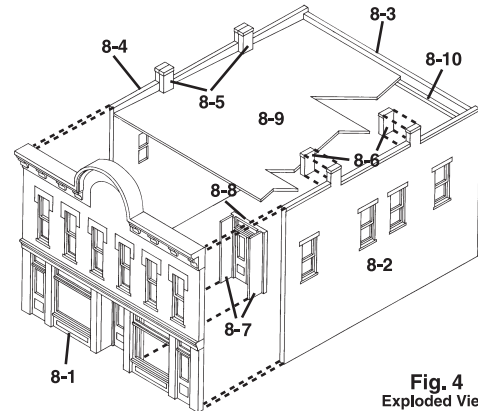


Fig. 4
Exploded View

N SCALE

(instructions continued)

Paint Building and Details

Apply a thin coat of primer before painting and let dry.

Airbrush: Use solvent-based, flat finish enamel paint.

Hand-brush: Use water-soluble, flat finish acrylic paint.

Aerosol: Use flat finish spray paint.

We recommend natural brick colors such as rust, tan or other earth tones. Paint door and window trim the same color as the brick or a contrasting color.

Weathering Tips

Add a realistic mortar-look to brickwork by painting on a concrete mortar wash (formula follows). Using a paintbrush, dab on small amounts of wash until desired look is achieved. Sponge off excess.

Formula: Mix 1-part acrylic paint (color suggestions: concrete or aged concrete), 12-parts rubbing alcohol, 8-parts water and 1 drop liquid dish soap.

Airbrush: Lightly spray thinned flat black paint (color suggestion: grimy black) to areas where natural discoloration can occur (near windows, chimneys, etc.).

Chalk: Rub a dark color of pastel chalk (color suggestions: gray, black, brown, etc.) on sandpaper to create a chalk dust. Using a paintbrush, dab chalk dust where discoloration can occur.

Install Windows

1. Cut Clear Window Material (clear styrene) to size to fit over an entire area of window openings at one time.
2. Center Window Material over windows on inside of building and carefully dab a small amount of glue around edges.
3. Repeat for each set of window openings.

Install Roof

1. Install Roof (8-9) through bottom of building and glue to bottom of Chimney Backs (Fig. 3).
2. Cut four Roof Supports (8-10) to fit length of Walls (8-1) and (8-3).
3. Glue two Roof Supports to the bottom of Roof and along Front Wall and two to the bottom of Roof and along Rear Wall (Fig. 3).

Finishing Touch

Give your building the illusion of being occupied. Place a piece of black construction paper diagonally from corner-to-corner inside the building to block the light.

Create interest on your layout. Add lights to your buildings quickly and easily using the Woodland Scenics® Just Plug® Lighting System.

Model making product. Not a toy! Not suitable for children under 14 years! / Produit pour le modélisme. Pas un jouet! Pas adapté aux enfants de moins de 14 ans! / Producto para modelismo. No es un juguete! No adecuado para niños menores de 14 años! / Modellbauartikel. Kein Spielzeug! Nicht geeignet für Kinder unter 14!



MODELING AND CARE INFORMATION:

This kit suggests the use of materials that may stain or cause damage. Take care to cover project area and clothing appropriately. Follow recommendations for use and cleanup.



CAUTION: Cutting tool recommended.

Use with care. / **MISE EN GARDE :** Outil de coupe recommandé. Utilisation avec soin. / **PRECAUCIÓN:** Herramienta cortante recomendada. Uso con cuidado. / **VORSICHT:** Schneidwerkzeug empfohlen. Gebrauch sorgfältig.

XINSTR8 Made in USA P11 ©1999 O CO



DETAILS, VEHICLE, FIGURES,
STREETLIGHT AND DECALS
NOT INCLUDED

Kit Contents

4 Walls, 1 Door, 1 Side Panel Material, 1 sheet Roof Material, 2 Roof Support Materials, 4 Chimney Backs, 3 sheets Clear Window Material, Instructions

KIT #8

BANK & TRUST CO.

2 1/4" W in x 3 1/4" D in x 2 1/2" in H
(7.14 cm x 8.25 cm x 6.35 cm)

WOODLAND SCENICS®

Manufactured by **WOODLAND®**
PO BOX 98, LINN CREEK, MO 65052
woodlandscenics.com

KIT #11 PIONEER PRESS

INSTRUCTIONS

Read through instructions before beginning construction.

Use plastic cement to glue parts. Plastic cement works by dissolving the surface of plastic and welding parts together. Be careful to avoid contact with detail on parts and visible areas on Clear Window Material. Always allow glue to set thoroughly before moving on to next construction step.

Prepare Building Parts

Wash Walls, Door and Chimney Backs in warm, soapy water, rinse and let dry. Use a hobby knife and sandpaper to remove excess plastic (tabs and flash) that occurred during the molding process. **Tabs:** Score flush with part, snap off and sand smooth.

Flash: Lightly scrape along edges to remove debris and sand smooth. Face cutting edge of blade opposite the scraping direction to avoid cutting into detail on Walls.

Square Draft Angles

Wall edges are angled (draft angles) to make removal from mold easier. Draft angles need to be sanded square to allow for proper assembly and a flush fit with adjoining Walls. To square edges, thumbtack a piece of 120-grit sandpaper to a board and draw Wall back and forth evenly on sandpaper until edge is square and level (Fig. 1). Edges to be sanded square do not have brick detail and are marked "A" (Fig. 2).

Door Side Panels

1. Using Side Panel Material (white styrene strip), cut two Entry Door Side Panels (11-6) the same height as Entry Door (11-7) (Fig. 4).
2. Glue Side Panels to Entry Door (Fig. 2 and 4).
3. Glue Front Door Assembly to back of Entry Wall (11-1) (Fig. 4).

Chimney Backs

The Roof (11-8) will be glued to the bottom of the four Chimney Backs (11-5).

1. File draft angle off bottom of Chimney Backs so top of Roof will glue flush.
2. Glue Chimney Backs in place. When glue is set, file tops flat.

Wall Assembly

1. Glue Front Wall (11-1) to Side Wall (11-2). Align brick courses while keeping bottom of Walls as level as possible and corners square. **TIP!** Use styrene Roof as a square.
2. Glue Back Wall (11-3) to Side Wall (11-4).
3. Glue Wall Assemblies to each other. Use rubber bands to hold building together while making final adjustments and drying.

Roof

1. To make Roof (11-8), place building on Roof Material (white styrene) and trace around interior walls. Cut out and trim to fit as needed.
 2. Prime Roof and paint grimy black before installing.
- TIP!** Cut small squares of scrap Roof Material and glue to Roof to simulate roof hatches. Small details add realism and interest to your building. Paint before gluing in place.

Level Building

On thumbtacked piece of 120-grit sandpaper, carefully sand bottom of building in a circular motion to level bottom edges so it will sit level on layout.

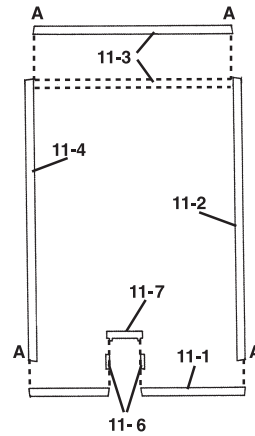


Fig. 2
Plan (View from Top)

Fig. 3
Cross Section

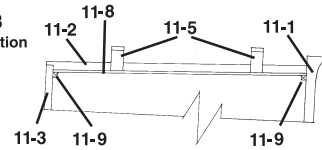


Fig. 1
Sand edges square

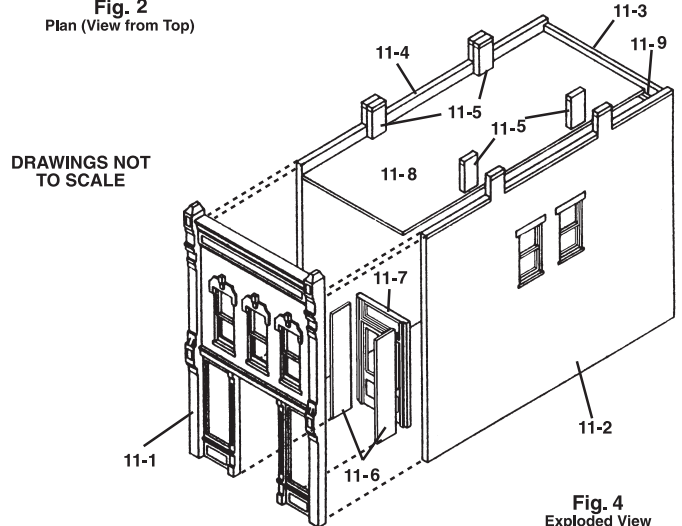
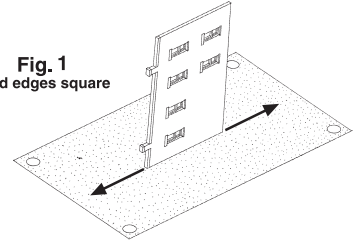


Fig. 4
Exploded View

(instructions continued on back)

N SCALE

(instructions continued)

Paint Building and Details

Apply a thin coat of primer before painting and let dry.

Airbrush: Use solvent-based, flat finish enamel paint.

Hand-brush: Use water-soluble, flat finish acrylic paint.

Aerosol: Use flat finish spray paint.

We recommend natural brick colors such as rust, tan or other earth tones. Paint door and window trim the same color as the brick or a contrasting color.

Weathering Tips

Add a realistic mortar-look to brickwork by painting on a concrete mortar wash (formula follows). Using a paintbrush, dab on small amounts of wash until desired look is achieved. Sponge off excess.

Formula: Mix 1-part acrylic paint (color suggestions: concrete or aged concrete), 12-parts rubbing alcohol, 8-parts water and 1 drop liquid dish soap.

Airbrush: Lightly spray thinned flat black paint (color suggestion: grimy black) to areas where natural discoloration can occur (near windows, chimneys, etc.).

Chalk: Rub a dark color of pastel chalk (color suggestions: gray, black, brown, etc.) on sandpaper to create a chalk dust. Using a paintbrush, dab chalk dust where discoloration can occur.

Install Windows

1. Cut Clear Window Material (clear styrene) to size to fit over an entire area of window openings at one time.
2. Center Window Material over windows on inside of building and carefully dab a small amount of glue around edges.
3. Repeat for each set of window openings.

Install Roof

1. Install Roof (11-8) through bottom of building and glue to bottom of Chimney Backs (**Fig. 3**).
2. Cut two Roof Supports (11-9) to fit the length of Walls (11-1) and (11-3).
3. Glue one Roof Support to bottom of Roof and along Front Wall and one to bottom of Roof and along Rear Wall (**Fig. 3**).

Finishing Touch

Give your building the illusion of being occupied. Place a piece of black construction paper diagonally from corner-to-corner inside the building to block the light.

Create interest on your layout. Add lights to your buildings quickly and easily using the Woodland Scenics® Just Plug® Lighting System.

Model making product. Not a toy! Not suitable for children under 14 years! / Produit pour le modélisme. Pas un jouet! Pas adapté aux enfants de moins de 14 ans! / Producto para modelismo. No es un juguete! No adecuado para niños menores de 14 años! / Modellbauartikel. Kein Spielzeug! Nicht geeignet für Kinder unter 14!



MODELING AND CARE INFORMATION:

This kit suggests the use of materials that may stain or cause damage. Take care to cover project area and clothing appropriately. Follow recommendations for use and cleanup.



CAUTION: Cutting tool recommended.

Use with care. / **MISE EN GARDE :** Outil de coupe recommandé. Utilisation avec soin. / **PRECAUCIÓN:** Herramienta cortante recomendada. Usa con cuidado. / **VORSICHT:** Schneidwerkzeug empfohlen. Gebrauch sorgfältig.

XINSTSR11 Made in USA P11 ©1999 O CO



Kit Contents

4 Walls, 1 Door, 1 Side Panel Material, 1 sheet Roof Material, 1 Roof Support Material, 4 Chimney Backs, 2 sheets Clear Window Material, Instructions

DETAILS, VEHICLES, FIGURES AND
DECALS NOT INCLUDED

KIT #11

PIONEER PRESS

1 7/8 in W x 2 3/4 in D x 2 1/4 in H
(3.33 cm x 6.98 cm x 5.71 cm)

WOODLAND SCENICS®

Manufactured by **WOODLAND®**
PO BOX 98, LINN CREEK, MO 65052
woodlandscenics.com

KIT #12 CAFÉ

INSTRUCTIONS

Read through instructions before beginning construction.

Use plastic cement to glue parts. Plastic cement works by dissolving the surface of plastic and welding parts together. Be careful to avoid contact with detail on parts and visible areas on Clear Window Material. Always allow glue to set thoroughly before moving on to next construction step.

Prepare Building Parts

Wash Walls, Door and Chimney Backs in warm, soapy water, rinse and let dry. Use a hobby knife and sandpaper to remove excess plastic (tabs and flash) that occurred during the molding process. **Tabs:** Score flush with part, snap off and sand smooth.

Flash: Lightly scrape along edges to remove debris and sand smooth. Face cutting edge of blade opposite the scraping direction to avoid cutting into detail on Walls.

Square Draft Angles

Wall edges are angled (draft angles) to make removal from mold easier. Draft angles need to be sanded square to allow for proper assembly and a flush fit with adjoining Walls. To square edges, thumbtack a piece of 120-grit sandpaper to a board and draw Wall back and forth evenly on sandpaper until edge is square and level (**Fig. 1**). Edges to be sanded square do not have brick detail and are marked "A" (**Fig. 2**).

Door Side Panels

1. Using Side Panel Material (white styrene strip), cut two Entry Door Side Panels (12-6) the same height as Entry Door (12-7) (**Fig. 3**).
2. Glue Side Panels to Entry Door (**Fig. 2 and 3**).
3. Glue Front Door Assembly to back of Entry Wall (12-1) (**Fig. 3**).

Chimney Backs

The Roof (12-8) will be glued to the bottom of the two Chimney Backs (12-5).

1. File draft angle off bottom of Chimney Backs so top of Roof will glue flush.
2. Glue Chimney Backs in place. When glue is set, file tops flat.

Wall Assembly

1. Glue Front Wall (12-1) to Side Wall (12-2). Align brick courses while keeping bottom of Walls as level as possible and corners square. **TIP!** Use styrene Roof as a square.
2. Glue Back Wall (12-3) to Side Wall (12-4).
3. Glue Wall Assemblies to each other. Use rubber bands to hold building together while making final adjustments and drying.

Roof

1. To make Roof (12-8), place building on Roof Material (white styrene) and trace around interior walls. Cut out and trim to fit as needed.
 2. Prime Roof and paint grimy black before installing.
- TIP!** Cut small squares of scrap Roof Material and glue to Roof to simulate roof hatches. Small details add realism and interest to your building. Paint before gluing in place.

Level Building

On thumbtacked piece of 120-grit sandpaper, carefully sand bottom of building in a circular motion to level bottom edges so it will sit level on layout.

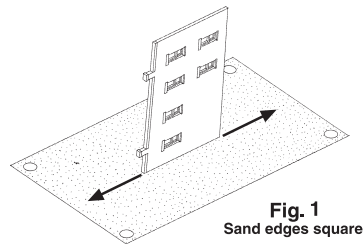
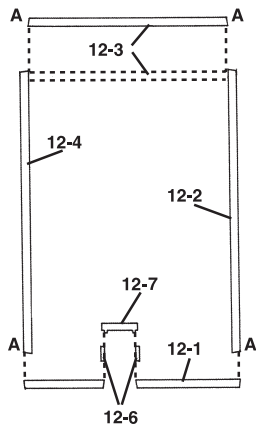


Fig. 1

Sand edges square

Fig. 2
Plan (View from Top)

DRAWINGS NOT
TO SCALE

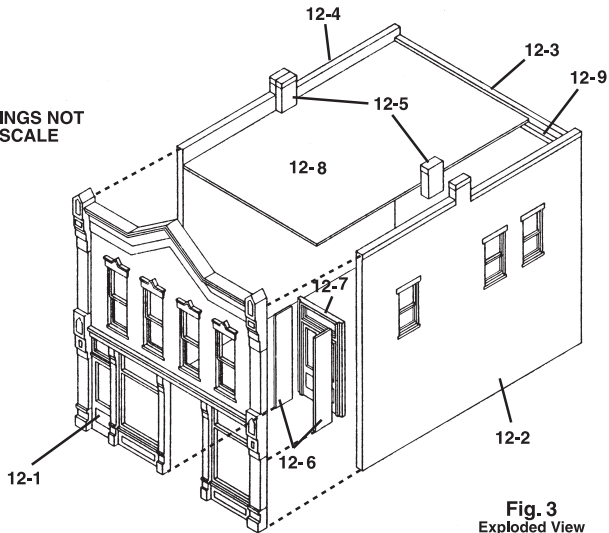


Fig. 3
Exploded View

(instructions continued on back)



Kit #12
Café

N SCALE

(instructions continued)

Paint Building and Details

Apply a thin coat of primer before painting and let dry.

Airbrush: Use solvent-based, flat finish enamel paint.

Hand-brush: Use water-soluble, flat finish acrylic paint.

Aerosol: Use flat finish spray paint.

We recommend natural brick colors such as rust, tan or other earth tones. Paint door and window trim the same color as the brick or a contrasting color.

Weathering Tips

Add a realistic mortar-look to brickwork by painting on a concrete mortar wash (formula follows). Using a paintbrush, dab on small amounts of wash until desired look is achieved. Sponge off excess.

Formula: Mix 1-part acrylic paint (color suggestions: concrete or aged concrete), 12-parts rubbing alcohol, 8-parts water and 1 drop liquid dish soap.

Airbrush: Lightly spray thinned flat black paint (color suggestion: grimy black) to areas where natural discoloration can occur (near windows, chimneys, etc.).

Chalk: Rub a dark color of pastel chalk (color suggestions: gray, black, brown, etc.) on sandpaper to create a chalk dust. Using a paintbrush, dab chalk dust where discoloration can occur.

Install Windows

1. Cut Clear Window Material (clear styrene) to size to fit over an entire area of window openings at one time.
2. Center Window Material over windows on inside of building and carefully dab a small amount of glue around edges.
3. Repeat for each set of window openings.

Install Roof

1. Install Roof (12-8) through bottom of building and glue to bottom of Chimney Backs (**Fig. 3**).
2. Cut four Roof Supports (12-9) to fit the length of Walls (12-1) and (12-3).
3. Glue two Roof Supports to the bottom of Roof and along Front Wall and two to the bottom of Roof and along Rear Wall (**Fig. 3**).

Finishing Touch

Give your building the illusion of being occupied. Place a piece of black construction paper diagonally from corner-to-corner inside the building to block the light.

Create interest on your layout. Add lights to your buildings quickly and easily using the Woodland Scenics® Just Plug® Lighting System.

Model making product. Not a toy! Not suitable for children under 14 years! / Produit pour le modélisme. Pas un jouet! Pas adapté aux enfants de moins de 14 ans! / Producto para modelismo. No es un juguete! No adecuado para niños menores de 14 años! / Modellbauartikel. Kein Spielzeug! Nicht geeignet für Kinder unter 14!



MODELING AND CARE INFORMATION:

This kit suggests the use of materials that may stain or cause damage. Take care to cover project area and clothing appropriately. Follow recommendations for use and cleanup.



CAUTION: Cutting tool recommended.

Use with care. / **MISE EN GARDE :** Outil de coupe recommandé. Utilisation avec soin. / **PRECAUCIÓN:** Herramienta cortante recomendada. Usa con cuidado. / **VORSICHT:** Schneidwerkzeug empfohlen. Gebrauch sorgfältig.

XINSTSR12 Made in USA P11 ©1999 O CO



N SCALE
STRUCTURE KIT



Kit Contents

4 Walls, 1 Door, 1 Side Panel Material, 1 sheet Roof Material, 2 Roof Support Materials, 2 Chimney Backs, 2 sheets Clear Window Material, Instructions

DETAILS, VEHICLE, FIGURES AND DECALS NOT INCLUDED

KIT #12 CAFÉ

2 1/2 in W x 2 3/4 in D x 2 5/8 in H
(5.39 cm x 6.98 cm x 6.66 cm)

WOODLAND SCENICS®

Manufactured by **WOODLAND®**
PO BOX 98, LINN CREEK, MO 65052
woodlandscenics.com

KIT #13 BAXTER HARDWARE

INSTRUCTIONS

Read through instructions before beginning construction.

Use plastic cement to glue parts. Plastic cement works by dissolving the surface of plastic and welding parts together. Be careful to avoid contact with detail on parts and visible areas on Clear Window Material. Always allow glue to set thoroughly before moving on to next construction step.

Prepare Building Parts

Wash Walls, Door and Chimney Backs in warm, soapy water, rinse and let dry. Use a hobby knife and sandpaper to remove excess plastic (tabs and flash) that occurred during the molding process. **Tabs:** Score flush with part, snap off and sand smooth.

Flash: Lightly scrape along edges to remove debris and sand smooth. Face cutting edge of blade opposite the scraping direction to avoid cutting into detail on Walls.

NOTE: Some Walls have alignment pins molded onto the backside to assist in proper alignment. Do not sand or remove alignment pins.

Square Draft Angles

Square Wall edges by sanding draft angles. Edges to be sanded are marked "A" (Fig. 3).

1. Sand both edges of Side Wall (13-4) and left edge of Back Wall (13-3).
2. Tack a piece of 120-grit sandpaper to a board, then sand evenly until wall edges are square.

Turret Window Panels

1. Remove Turret Window Panels (5x) from sprue and clean as noted above.
2. Carefully, glue Turret Window Panels together in illustrated order (Fig. 1). It is important that the windows are correctly aligned. Set aside to dry.

NOTE: Turret Window Panels are assembled as a unit and attached to the building at a later step. For assembly purposes, the backside of a Panel is marked "0" and another is marked "00". The Panel marked "0" will attach to Wall (13-2) and Panel marked "00" will attach to Wall (13-1) (Fig. 3). Turret Window Panels must be assembled in the proper order.

Attach Corner Block to Roof

1. Roof will be placed with the rolled roofing side up. Use a hobby knife to scrape "0" from corner of Roof (13-8) and "0" from Corner Block (13-7). Face the cutting edge of blade opposite the direction you scrape as to not cut into the part.
2. Align and glue Corner Block (13-7) to Roof (13-8) in corner previously marked "0" (Fig. 2).

Paint Roof

Prime Roof and paint grimy black before installing.

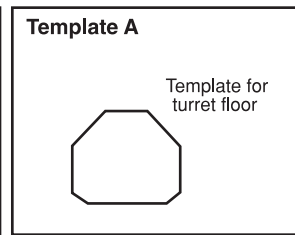
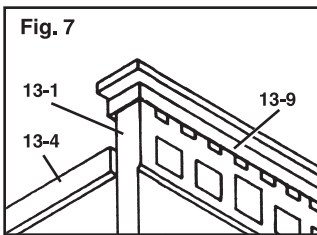
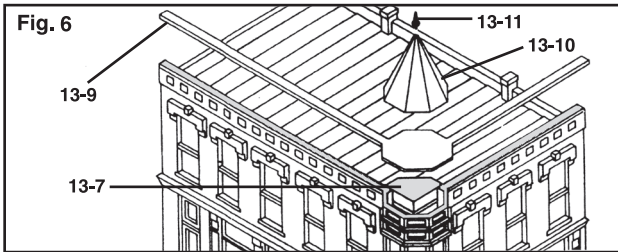
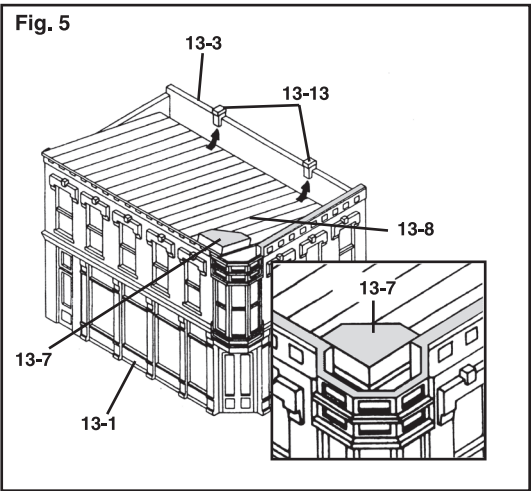
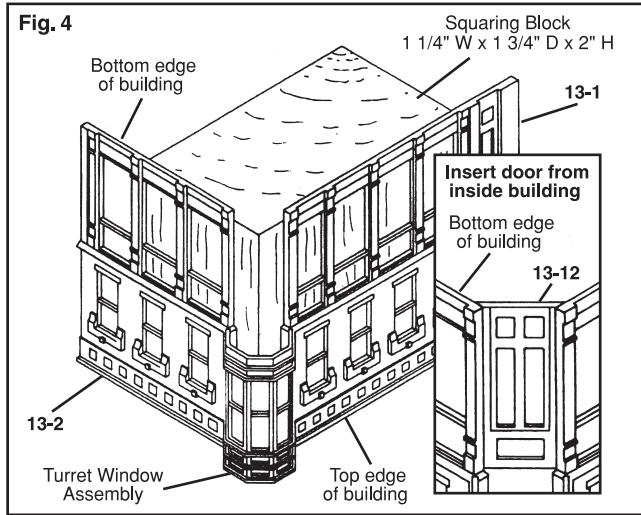
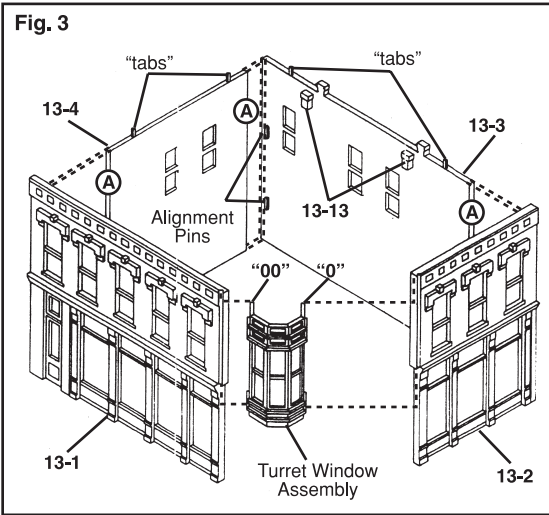
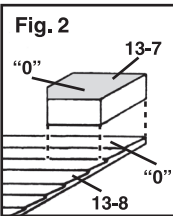
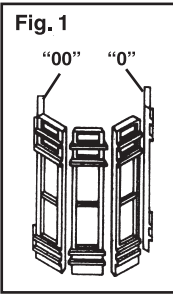
Chimney Backs

1. Glue Chimney Backs (13-13) to molded-in chimney fronts (Fig. 3).
2. When glue is dry, sand tops level.

Wall Assembly Part 1

1. Align Wall (13-4) with alignment pins on Wall (13-3) (Fig. 3). Check seams for alignment and fit. Although Walls are different heights, the bottom of Walls must be as level as possible.
2. Apply glue along inside seams.

(instructions continued on back)



(instructions continued)

Attach Turret Window Assembly

1. Turn Walls (13-1) and (13-2) and Turret Assembly upside down (Fig. 4). There is a groove in the edge of the Walls where the Turret Assembly is attached.
2. Align Wall (13-2) with side of Turret Assembly marked "0". Apply glue along seam. Hold until setting begins.
3. Align Wall (13-1) with Turret Assembly marked "00". Apply glue along seam. Hold until setting begins. Be sure top of Turret Assembly and top of Walls (13-1) and (13-2) are flush and aligned with each other.

NOTE: A squaring block with 90° angles is useful with this step of assembly.

Install Door

From the inside, place Door (13-12) in opening and glue in place (Fig. 4 inset).

Wall Assembly Part 2

Using alignment pins as a guide, glue Wall Assembly (13-3 and 13-4) to Wall and Turret Assembly (13-1 and 13-2). Keep bottom of walls level. Let dry.

Roof Installation

1. From the top of the building, slide Roof (13-8) under Chimney Backs (13-13) (Fig. 5). If Roof does not fit, sand edge(s) as needed.
2. Roof should set snug against bottom of Chimney Backs. Top of Corner Block should set flush with top of adjoining Walls (13-1 and 13-2) (Fig. 5 inset). If necessary, sand slightly to level.
3. Glue Roof from underneath. Let dry.

Cornice

1. Sand underside of L-shaped Cornice (13-9) to remove molding marks. This will allow Cornice to set flush.
2. Align and glue Cornice to top of Walls (13-1) and (13-2) (Fig. 6). Edge of cornice will extend slightly beyond edge of Walls as shown (Fig. 7).

Turret Dome and Finial

1. Center Turret Dome (13-10) on Cornice (13-9) and glue in place (Fig. 6).
2. Glue Finial (13-11) to top of Turret Dome.

Level Building

On thumbtacked piece of 120-grit sandpaper, carefully sand bottom of building in a circular motion to level bottom edges so it will sit level on layout.

Paint Building and Details

Apply a thin coat of primer before painting and let dry.

Airbrush: Use solvent-based, flat finish enamel paint.

Hand-brush: Use water-soluble, flat finish acrylic paint.

Aerosol: Use flat finish spray paint.

We recommend natural brick colors such as rust, tan or other earth tones. Paint door and window trim the same color as the brick or a contrasting color.



Kit #13
Baxter Hardware

N SCALE

Weathering Tips

Add a realistic mortar-look to brickwork by painting on a concrete mortar wash (formula follows). Using a paintbrush, dab on small amounts of wash until desired look is achieved. Sponge off excess.

Formula: Mix 1-part acrylic paint (color suggestions: concrete or aged concrete), 12-parts rubbing alcohol, 8-parts water and 1 drop liquid dish soap.

Airbrush: Lightly spray thinned flat black paint (color suggestion: grimy black) to areas where natural discoloration can occur (near windows, chimneys, etc.).

Chalk: Rub a dark color of pastel chalk (color suggestions: gray, black, brown, etc.) on sandpaper to create a chalk dust. Using a paintbrush, dab chalk dust where discoloration can occur.

Install Windows

1. Cut both pieces of Clear Window Material lengthwise into 3 strips (3/4" wide x 3 1/2" long).
2. Cut a 15/16" piece from one of the strips. Bend the 15/16" piece carefully into a circular shape, taking care to not crease the material. Fit into Turret (Fig. 8). It is not necessary to glue this piece as turret floor will hold it in place.
3. Cut Clear Window Material to fit over windows on inside of building. Window installation is easier when material is installed over sections of windows at one time.
4. Place the building on its front face, center Window Material over windows on inside of building and dab a small amount of glue around edges.

Turret Floor

1. Use Template A from the instruction sheet as a pattern.
2. Trace and cut the Turret Floor using Clear Window Material. Paint black and let dry.
3. Carefully, glue floor to bottom of Turret.

Finishing Touch

Give your building the illusion of being occupied. Place a piece of black construction paper diagonally from corner-to-corner inside the building to block the light.

Create interest on your layout. Add lights to your buildings quickly and easily using the Woodland Scenics® Just Plug® Lighting System.

Model making product. Not a toy! Not suitable for children under 14 years! / Produit pour le modélisme. Pas un jouet! Pas adapté aux enfants de moins de 14 ans! / Producto para modelismo. No es un juguete! No adecuado para niños menores de 14 años! / Modellbauartikel. Kein Spielzeug! Nicht geeignet für Kinder unter 14!

MODELING AND CARE INFORMATION: This kit suggests the use of materials that may stain or cause damage. Take care to cover project area and clothing appropriately. Follow recommendations for use and cleanup.

CAUTION: Cutting tool recommended. Use with care. / **MISE EN GARDE :** Outil de coupe recommandé. Utilisation avec soin. / **PRECAUCIÓN:** Herramienta cortante recomendada. Uso con cuidado. / **VORSICHT:** Schneidwerkzeug empfohlen. Gebrauch sorgfältig.

XINSTSR13 Made in USA P11 ©1999 O CO



N SCALE
STRUCTURE KIT



Kit Contents

4 Walls, 1 Door, 1 Roof, 1 Corner Block, 1 Cornice, 1 Turret Dome, 1 Finial, 5 Turret Window Panels, 2 Chimney Backs, 2 sheets Clear Window Material, Instructions

DETAILS, VEHICLE, FIGURES, STREETLIGHTS AND DECALS NOT INCLUDED

**KIT #13
BAXTER
HARDWARE**
2 7/8 in W x 2 in D x 3 in H
(7.3 cm x 5.08 cm x 7.62 cm)

WOODLAND SCENICS®
Manufactured by **WOODLAND®**
PO BOX 98, LINN CREEK, MO 65052
woodlandscenics.com

KIT #14 SHOTZ GUNS & TACKLE

INSTRUCTIONS

Read through instructions before beginning construction.

Use plastic cement to glue parts. Plastic cement works by dissolving the surface of plastic and welding parts together. Be careful to avoid contact with detail on parts and visible areas on Clear Window Material. Always allow glue to set thoroughly before moving on to next construction step.

Prepare Building Parts

Wash Walls, Door and Chimney Backs in warm, soapy water, rinse and let dry. Use a hobby knife and sandpaper to remove excess plastic (tabs and flash) that occurred during the molding process. **Tab's:** Score flush with part, snap off and sand smooth.

Flash: Lightly scrape along edges to remove debris and sand smooth. Face cutting edge of blade opposite the scraping direction to avoid cutting into detail on Walls.

Square Draft Angles

Wall edges are angled (draft angles) to make removal from mold easier. Draft angles need to be sanded square to allow for proper assembly and a flush fit with adjoining Walls. To square edges, thumbtack a piece of 120-grit sandpaper to a board and draw Wall back and forth evenly on sandpaper until edge is square and level (**Fig. 3**). Edges to be sanded square do not have brick detail and are marked "A" (**Fig. 1**).

Chimney Backs

1. Sand bottom edge of Chimney Backs (14-5).
2. Align Chimney Backs with molded-in chimney fronts on Side Walls (14-2 and 14-4) and glue in place (**Fig. 1 and 1a**). When glue is set, sand tops of Chimneys flat.

Back and Side Wall Assembly

1. Butt Back Wall (14-3) against alignment pins on Side Walls (14-2) and (14-4), keeping bottom edges as level as possible (**Fig. 1**).
2. Apply glue along inside seams. Front Wall (14-1) will be attached later.

TIP! Use Roof as a squaring guide when aligning Walls.

Paint Roof

Prime Roof and paint grimy black before installing.

Install Roof

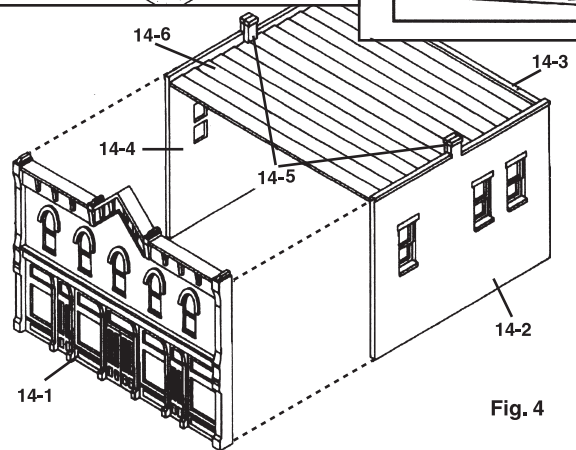
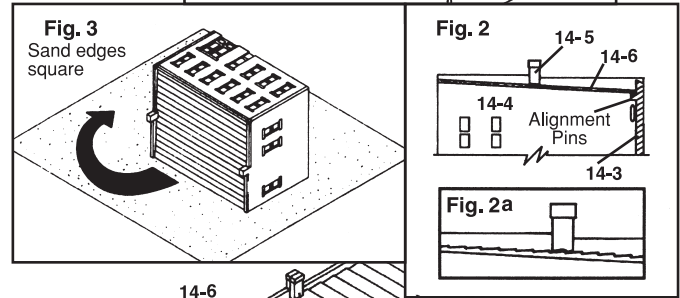
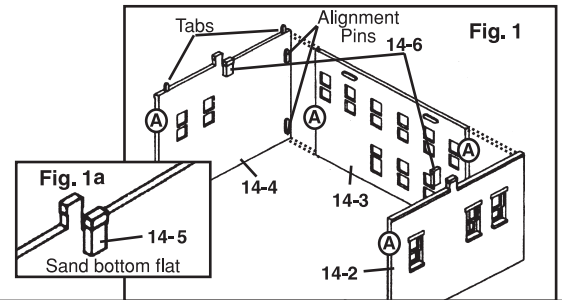
1. Install Roof (14-6) rolled side or smooth side up.
2. Slide Roof into place from front of building. Roof slopes downward toward rear of building. If installing Roof rolled side up, rolled edge must slope toward rear in a step-down fashion (**Fig. 2a**).
3. Back of Roof rests on Back Wall's alignment pins and sets against underside of Chimneys (**Fig. 2**). Apply glue to roof from underneath building.

Front Wall Assembly

1. After glue is set, place building on its face and sand lightly in a circular motion (**Fig. 3**).
2. Test fit Front Wall (14-1) and check for gaps (**Fig. 4**). If gaps occur, sand again.
3. When fit is good, apply glue along inside seams. Use rubber bands to keep Walls aligned while glue sets.

Level Building

On thumbtacked piece of 120-grit sandpaper, carefully sand bottom of building in a circular motion to level bottom edges so it will sit level on layout.



(instructions continued on back)

N SCALE

(instructions continued)

Paint Building and Details

Apply a thin coat of primer before painting and let dry.

Airbrush: Use solvent-based, flat finish enamel paint.

Hand-brush: Use water-soluble, flat finish acrylic paint.

Aerosol: Use flat finish spray paint.

We recommend natural brick colors such as rust, tan or other earth tones. Paint door and window trim the same color as the brick or a contrasting color.

Weathering Tips

Add a realistic mortar-look to brickwork by painting on a concrete mortar wash (formula follows). Using a paintbrush, dab on small amounts of wash until desired look is achieved. Sponge off excess.

Formula: Mix 1-part acrylic paint (color suggestions: concrete or aged concrete), 12-parts rubbing alcohol, 8-parts water and 1 drop liquid dish soap.

Airbrush: Lightly spray thinned flat black paint (color suggestion: grimy black) to areas where natural discoloration can occur (near windows, chimneys, etc.).

Chalk: Rub a dark color of pastel chalk (color suggestions: gray, black, brown, etc.) on sandpaper to create a chalk dust. Using a paintbrush, dab chalk dust where discoloration can occur.

Install Windows

1. Cut Clear Window Material (clear styrene) to size to fit over an entire area of window openings at one time.
2. Center Window Material over windows on inside of building and carefully dab a small amount of glue around edges.
3. Repeat for each set of window openings.

Finishing Touch

Give your building the illusion of being occupied. Place a piece of black construction paper diagonally from corner-to-corner inside the building to block the light.

Create interest on your layout. Add lights to your buildings quickly and easily using the Woodland Scenics® Just Plug® Lighting System.

Model making product. Not a toy! Not suitable for children under 14 years! / Produit pour le modélisme. Pas un jouet! Pas adapté aux enfants de moins de 14 ans! / Producto para modelismo. No es un juguete! No adecuado para niños menores de 14 años! / Modellbauartikel. Kein Spielzeug! Nicht geeignet für Kinder unter 14!



MODELING AND CARE INFORMATION:

This kit suggests the use of materials that may stain or cause damage. Take care to cover project area and clothing appropriately. Follow recommendations for use and cleanup.



CAUTION: Cutting tool recommended.

Use with care. / **MISE EN GARDE :** Outil de coupe recommandé. Utilisation avec soin. / **PRECAUCIÓN:** Herramienta cortante recomendada. Uso con cuidado. / **VORSICHT:** Schneidwerkzeug empfohlen. Gebrauch sorgfältig.



Kit Contents

4 Walls, 1 Roof, 2 Chimney Backs, 2 sheets Clear Window Material, Instructions

DETAILS, VEHICLES, FIGURES,
STREETLIGHT AND DECALS
NOT INCLUDED

KIT #14 SHOTZ GUNS & TACKLE

3 ¼ in W x 2 1/16 in D x 2 ½ in H
(8.25 cm x 7.46 cm x 6.66 cm)

WOODLAND SCENICS®

Manufactured by **WOODLAND®**
PO BOX 98, LINN CREEK, MO 65052
woodlandscenics.com

KIT #15 REEL THEATER

INSTRUCTIONS

Read through instructions before beginning construction.

Use plastic cement to glue parts. Plastic cement works by dissolving the surface of plastic and welding parts together. Be careful to avoid contact with detail on parts and visible areas on Clear Window Material. Always allow glue to set thoroughly before moving on to next construction step.

Prepare Building Parts

Wash Walls, Door and Chimney Backs in warm, soapy water, rinse and let dry. Use a hobby knife and sandpaper to remove excess plastic (tabs and flash) that occurred during the molding process. **Tab**s: Score flush with part, snap off and sand smooth.

Flash: Lightly scrape along edges to remove debris and sand smooth. Face cutting edge of blade opposite the scraping direction to avoid cutting into detail on Walls.

NOTE: Some Walls have alignment pins molded onto the backside to assist in proper alignment. Do not sand or remove alignment pins.

Square Draft Angles

Wall edges are angled (draft angles) to make removal from mold easier. Draft angles need to be sanded square to allow for proper assembly and a flush fit with adjoining Walls. To square edges, thumbtack a piece of 120-grit sandpaper to a board and draw Wall back and forth evenly on sandpaper until edge is square and level. Edges to be sanded square do not have brick detail and are marked "A" (Fig. 4).

Bay Window Panels

1. Bay Windows will be assembled as two three-window sets. Center Window Panels are slightly wider than Outer Window Panels and have mitered angles on both edges. Outer Panels have one square edge to attach to the building and one mitered edge to attach to Center Panel. All windows have a narrow panel at the bottom (Fig. 1).
2. Remove Bay Window Panels from sprue. Assemble and glue Window Panel sets (Fig. 1). Keep top and bottom edges as level as possible.

Attach Bay Window Assemblies to Front Wall

1. Run a narrow bead of glue along outer edges of Bay Window Assemblies.
2. Insert in grooves on Front Wall (15-1) (Fig. 2). Be sure narrow panels are at the bottom and wide panels are at the top of the Assembly and Wall and Bay Window Assembly ridges are aligned (Fig. 3).
3. Tops of Walls and Bay Windows must be level with each other. If necessary, sand entire top of Front Wall assembly to level.

Paint Roof

Prime rough side of Roof and paint it grimy black before installing.

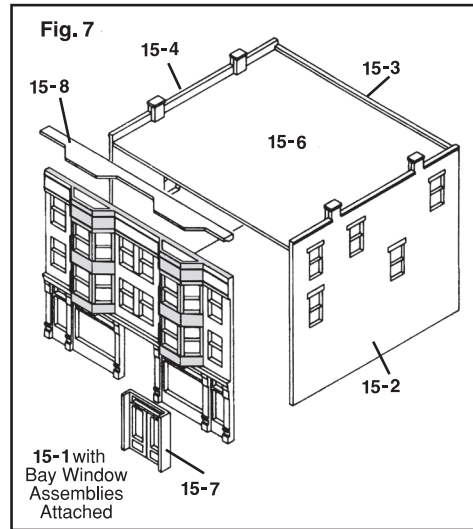
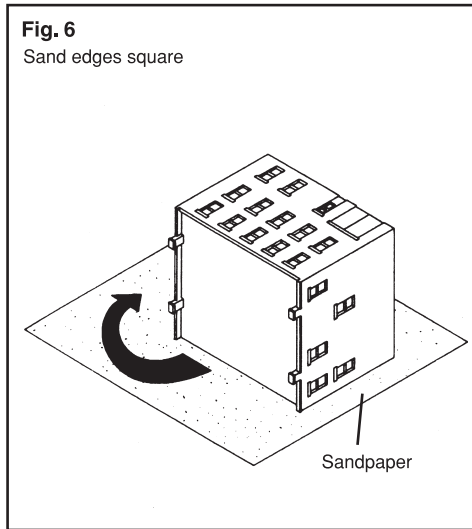
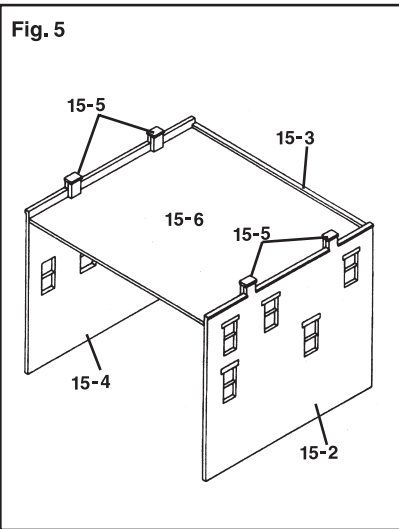
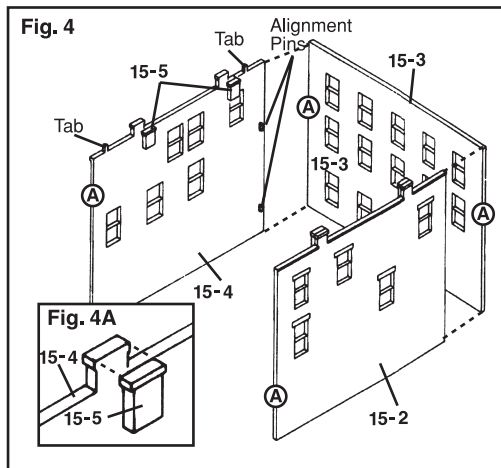
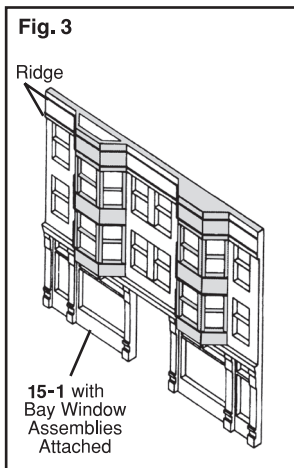
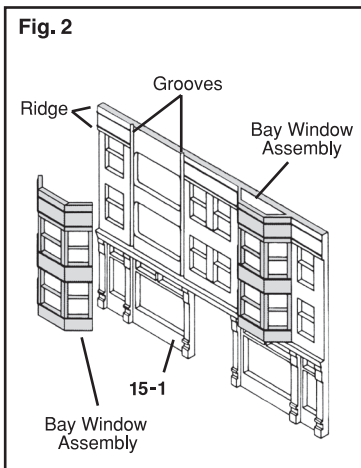
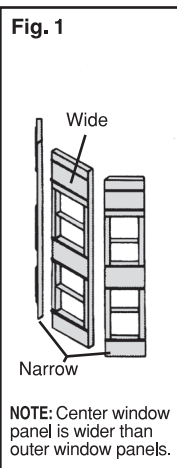
Chimney Backs

1. The Roof (15-6) will be glued to the bottom of the four Chimney Backs (15-5). File draft angle off bottom of Chimneys so Roof will set flush.
2. Glue Chimney Backs to backside of molded-in chimney fronts.
3. When glue is set, file tops flat.

Back and Side Wall Assembly

1. Side Walls (15-2) and (15-4) have alignment pins to aid in alignment of parts.
2. Align Back Wall (15-3) with alignment pins on Side Walls (15-2) and (15-4) (Fig. 4).
3. Check alignment and glue in place.

(instructions continued on back)



(instructions continued)

Install Roof

1. From front of building, slide Roof (15-6) under Chimney Backs into place (Fig. 5).
2. If Roof does not fit, sand edges as necessary.
3. Apply glue along inside seams.

Attach Front Wall

1. Place building on its front face and lightly sand in a circular motion (Fig. 6).
2. Test fit Front Wall (15-1) and check seams (Fig. 7). If gaps occur, repeat sanding step.
3. Apply glue along inside seams.

Level Building

On thumbtacked piece of 120-grit sandpaper, carefully sand bottom of building in a circular motion to level bottom edges so it will sit level on layout.

Install Door

1. Sand bottom of Door (15-7) to remove draft angle and square bottom.
2. From inside building, align Door in opening and glue in place. Check to make sure that the building still sits squarely.

Paint Building and Details

Apply a thin coat of primer before painting and let dry.

Airbrush: Use solvent-based, flat finish enamel paint.

Hand-brush: Use water-soluble, flat finish acrylic paint.

Aerosol: Use flat finish spray paint.

We recommend natural brick colors such as rust, tan or other earth tones. Paint door and window trim the same color as the brick or a contrasting color.

Weathering Tips

Add a realistic mortar-look to brickwork by painting on a concrete mortar wash (formula follows). Using a paintbrush, dab on small amounts of wash until desired look is achieved. Sponge off excess.

Formula: Mix 1-part acrylic paint (color suggestions: concrete or aged concrete), 12-parts rubbing alcohol, 8-parts water and 1 drop liquid dish soap.

Airbrush: Lightly spray thinned flat black paint (color suggestion: grimy black) to areas where natural discoloration can occur (near windows, chimneys, etc.).

Chalk: Rub a dark color of pastel chalk (color suggestions: gray, black, brown, etc.) on sandpaper to create a chalk dust. Using a paintbrush, dab chalk dust where discoloration can occur.

Install Windows

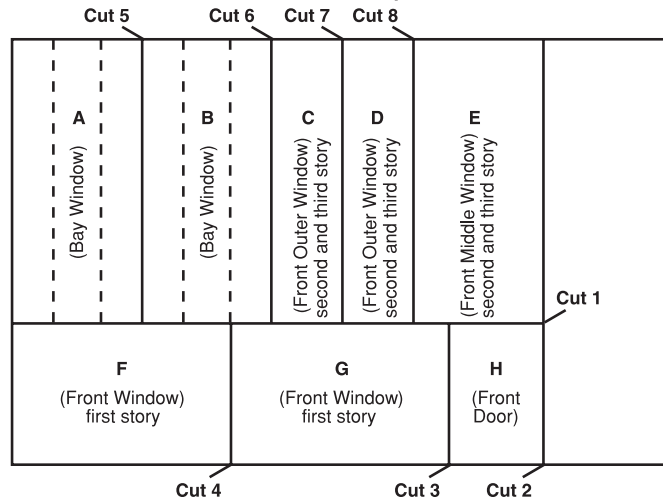
1. Cut Clear Window Material (clear styrene) for Bay Windows using the Window Template.
2. Lightly score pieces A and B on dotted lines where indicated on Template.
3. Fold pieces carefully on the scored lines and gently insert into Bay Window Assemblies from the top. It is not necessary to glue these pieces in place.
4. Glue pieces C and D behind the vertical second and third-story outside windows on the Front Wall.
5. Glue piece E vertically behind center second and third-story windows on Front Wall.
6. Glue pieces F and G horizontally over first-story front windows.
7. Glue piece H inside front door.
8. Cut remaining sheets of Clear Window Material lengthwise into four 5/8" wide strips. Measure a set of window openings and trim clear window material strips to proper length. Repeat for each set of window openings. Carefully, dab a small amount of glue around edges to glue in place.



Kit #15
Reel Theater

N SCALE

Window Material Template



Cornice

Fit and glue Cornice (15-8) to top of Front Wall Assembly with decorative side down (Fig. 7).

Finishing Touch

Give your building the illusion of being occupied. Place a piece of black construction paper diagonally from corner-to-corner inside the building to block the light.

Create interest on your layout. Add lights to your buildings quickly and easily using the Woodland Scenics® Just Plug® Lighting System.

CAUTION: Cutting tool recommended. Use with care. / **MISE EN GARDE :** Outil de coupe recommandé. Utilisation avec soin. / **PRECAUCION:** Herramienta cortante recomendada. Uso con cuidado. / **VORSICHT:** Schneidwerkzeug empfohlen. Gebrauch sorgfältig.

Model making product. Not a toy! Not suitable for children under 14 years! / Produit pour le modélisme. Pas un jouet! Pas adapté aux enfants de moins de 14 ans! / Producto para modelismo. No es un juguete! No adecuado para niños menores de 14 años! / Modellbauartikel. Kein Spielzeug! Nicht geeignet für Kinder unter 14!

XINSTSR15 Made in USA P11 ©1999 O CO



N SCALE
STRUCTURE KIT



Kit Contents

4 Walls, 1 Door, 6 Window Panels, 1 Roof, 1 Cornice,
4 Chimney Backs, 3 sheets Clear Window Material,
Instructions

DETAILS, VEHICLES, FIGURES AND
DECALS NOT INCLUDED

KIT #15
REEL THEATER
3 3/16 in W x 2 1/16 in D x 2 3/4 in H
(8.09 cm x 7.46 cm x 6.98 cm)

WOODLAND SCENICS®

Manufactured by **WOODLAND®**
PO BOX 98, LINN CREEK, MO 65052
woodlandscenics.com

KIT #16 BEST REST HOTEL

INSTRUCTIONS

Read through instructions before beginning construction.

Use plastic cement to glue parts. Plastic cement works by dissolving the surface of plastic and welding parts together. Be careful to avoid contact with detail on parts and visible areas on Clear Window Material. Always allow glue to set thoroughly before moving on to next construction step.

Prepare Building Parts

Wash Walls, Door and Chimney Backs in warm, soapy water, rinse and let dry. Use a hobby knife and sandpaper to remove excess plastic (tabs and flash) that occurred during the molding process. **Tabs:** Score flush with part, snap off and sand smooth.

Flash: Lightly scrape along edges to remove debris and sand smooth. Face cutting edge of blade opposite the scraping direction to avoid cutting into detail on Walls.

NOTE: Some Walls have alignment pins to assist in proper alignment. Do not sand or remove alignment pins.

Chimney Backs

1. Sand bottom edge of Chimney Backs (16-5).
2. Align Chimney Backs with molded-in chimney fronts on Back Wall (16-3) and glue in place (Fig. 1). When glue is set, sand tops of Chimneys flat.

Front Wall Assembly

1. Front Wall (16-1) and Side Wall (16-2) have a 45° angle along edge where they join together (Fig. 1).
2. Align Walls (16-1) and (16-2) and keep bottom edges as level as possible. Use Roof as a squaring guide when aligning Walls.
3. Apply glue along inside seam. Hold Walls square until setting begins. Set aside when glue is set.

Back and Side Wall Assembly

1. Sand draft angle from both edges of Side Wall (16-4) and right edge of Rear Wall (16-3). Do not sand brick detail.
2. Align Side Wall (16-4) with alignment pins on Back Wall (16-3) and keep bottom edges as level as possible (Fig. 1).
3. Glue in place and hold until setting begins. Use Roof as a squaring guide when aligning Walls. Hold Walls square until setting begins.

Paint Roof

Prime Roof and paint grimy black before installing.

Attach Front Wall Assembly to Back and Side Wall Assembly

1. Align Back Wall Assembly (16-3) and (16-4) with alignment pins on Front Wall Assembly (16-1) and (16-2).
2. Apply glue along inside seams. Use rubber bands to keep Walls aligned while glue sets.

Level Building

On thumbtacked piece of 120-grit sandpaper, carefully sand bottom of building in a circular motion to level bottom edges so it will sit level on layout.

Paint Building and Details

Apply a thin coat of primer before painting and let dry.

Airbrush: Use solvent-based, flat finish enamel paint.

Hand-brush: Use water-soluble, flat finish acrylic paint.

Aerosol: Use flat finish spray paint.

We recommend natural brick colors such as rust, tan or other earth tones. Paint door and window trim the same color as the brick or a contrasting color.

(instructions continued on back)

Fig. 1

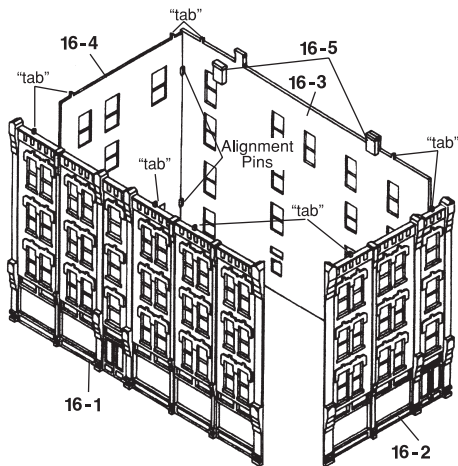
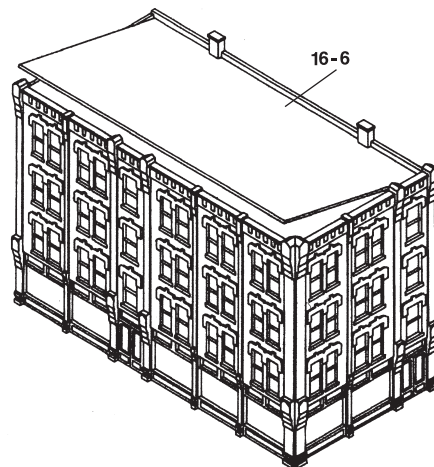


Fig. 2



N SCALE

(instructions continued)

Weathering Tips

Add a realistic mortar-look to brickwork by painting on a concrete mortar wash (formula follows). Using a paintbrush, dab on small amounts of wash until desired look is achieved. Sponge off excess.

Formula: Mix 1-part acrylic paint (color suggestions: concrete or aged concrete), 12-parts rubbing alcohol, 8-parts water and 1 drop liquid dish soap.

Airbrush: Lightly spray thinned flat black paint (color suggestion: grimy black) to areas where natural discoloration can occur (near windows, chimneys, etc.).

Chalk: Rub a dark color of pastel chalk (color suggestions: gray, black, brown, etc.) on sandpaper to create a chalk dust. Using a paintbrush, dab chalk dust where discoloration can occur.

Roof Assembly

1. Test fit Roof (16-6) by sliding it under bottom of Chimneys from front of building (Fig. 2).
2. Set Roof underneath Chimney bottoms on Back Wall (16-3) and rest on alignment pins molded onto Front Wall (16-1).
3. Apply glue from underside of building.

Install Windows

1. Center Clear Window Material over backside of window on interior of building. Dab a tiny amount of glue around edges.
2. Cut a piece of Clear Window Material 7/8" x 2 1/4" and glue horizontally over first three fourth-floor windows on Front Wall (16-1). Glue remainder of this piece horizontally on windows directly below (first through third-floor). Glue a full sheet vertically over remaining windows on Front Wall (16-1). Trim sheet if necessary.
3. Glue a full sheet vertically to Side Wall (16-2). Trim sheet if necessary.
4. Glue two full sheets vertically, side-by-side to Back Wall (16-3). Trim sheet if necessary.
5. Glue one full sheet vertically to Side Wall (16-4). Trim sheet if necessary.

Finishing Touch

Give your building the illusion of being occupied. Place a piece of black construction paper diagonally from corner-to-corner inside the building to block the light.

Create interest on your layout. Add lights to your buildings quickly and easily using the Woodland Scenics® Just Plug® Lighting System.

x 2 1/4" and glue horizontally over

Model making product. Not a toy! Not suitable for children under 14 years! / Produit pour le modélisme. Pas un jouet! Pas adapté aux enfants de moins de 14 ans! / Producto para modelismo. No es un juguete! No adecuado para niños menores de 14 años! / Modellbauartikel. Kein Spielzeug! Nicht geeignet für Kinder unter 14!



MODELING AND CARE INFORMATION:

This kit suggests the use of materials that may stain or cause damage. Take care to cover project area and clothing appropriately. Follow recommendations for use and cleanup.



CAUTION: Cutting tool recommended.

Use with care. / **MISE EN GARDE :** Outil de coupe recommandé. Utilisation avec soin. / **PRECAUCIÓN:** Herramienta cortante recomendada. Uso con cuidado. / **VORSICHT:** Schneidwerkzeug empfohlen. Gebrauch sorgfältig.



Kit Contents

4 Walls, 1 Roof, 2 Chimney Backs, 6 sheets Clear Window Material, Instructions

VEHICLES AND FIGURES
NOT INCLUDED

KIT #16 BEST REST HOTEL

5 1/4 in W x 2 1/8 in D x 3 3/4 in H
(13.3 cm x 6.5 cm x 9.52 cm)

WOODLAND SCENICS®

Manufactured by **WOODLAND®**
PO BOX 98, LINN CREEK, MO 65052
woodlandscenics.com