

# MODEL GRAPHICS®

## APPLICATION

Apply to a clean, dry and dust-free surface. Position decal (**Fig. 1**). Hold carrier sheet firmly in place. Rub over decal with Woodland Scenics Burnisher (DT600) or dull pencil (**Fig. 2**). Image will begin to gray out as it transfers. For best results, check the transfer progress (**Fig. 3**), then reburnish over backing sheet (**Fig. 4**). To be sure letters or numbers line up, use a paper straightedge temporarily taped to your model and apply decals along this line. When applying short stripes, make small cuts at desired length and transfer as usual. For long stripes, apply end-to-end.

## FINISHES

Most any clear spray (gloss or flat) can be applied over our Dry Transfer Decals because they are solvent-resistant. Dry Transfer Decals can be weathered with chalk, paint, washes, or light oversprays and lifted, cut, or damaged to give the appearance of age.

## TEXTURES

On textured or irregular surfaces, apply as usual, but use just enough pressure to transfer to model surface. Carefully press Decal into and around fine details. The Dry Transfer's unique properties will allow it to stretch and conform to most textures.

## DURABILITY

Dry Transfer Decals can withstand severe stress and abuse, and will not be destroyed when crumpled or folded.

## STORAGE

Store in a clean, dry place, in a resealable plastic bag.

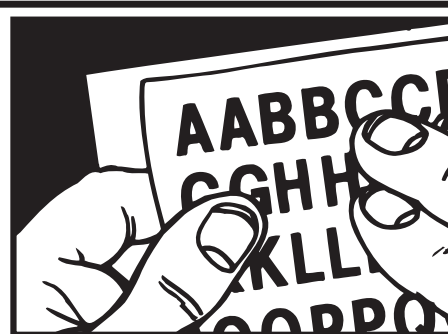


Fig. 1 Position decal.



Fig. 2 Rub over decal.

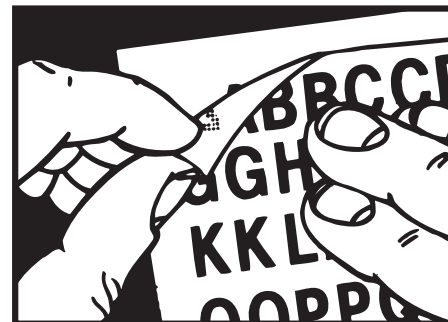


Fig. 3 Check transfer progress.

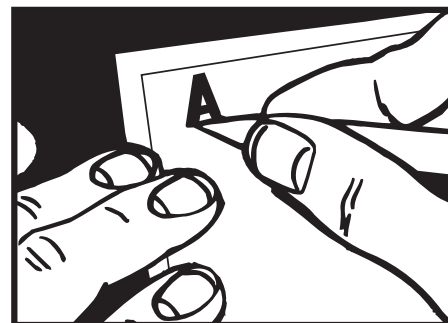


Fig. 4 Reburnish over backing sheet.

Conforms  
to Health  
Requirements of  
ASTM D4236

Model making product. Not a toy! Not suitable for children under 14 years! / Produit pour le modélisme. Pas un jouet! Pas adapté aux enfants de moins de 14 ans! / Producto para modelismo. No es un juguete! No adecuado para niños menores de 14 años! / Modellbauartikel. Kein Spielzeug! Nicht geeignet für Kinder unter 14!