

DESIGN PRESERVATION MODELS



LANDMARK STRUCTURES™

HO

BUILDING KIT



**Setting Superior Standards in
Design, Detail and Assembly**

- Architectural Works of Art
- Craftsmanship Detailing
- Positive Alignment System

Design Preservation Models
is a division of:



**Woodland
Scenics®**

P.O. Box 98, Linn Creek, MO 65052

**STONE
BAKERY**

3" W x 4 5/16" D x 5 5/8" H

#12300



SAFETY INFORMATION

WARNING: Sharp objects. Choking Hazard!
Small parts. Not intended for children under 3 yrs.
Adult supervision required.



QUALITY GUARANTEE

We guarantee the quality of all Woodland Scenics products.
If this product does not perform properly, please contact us.



CAUTION

Cutting tools recommended. Use with care.

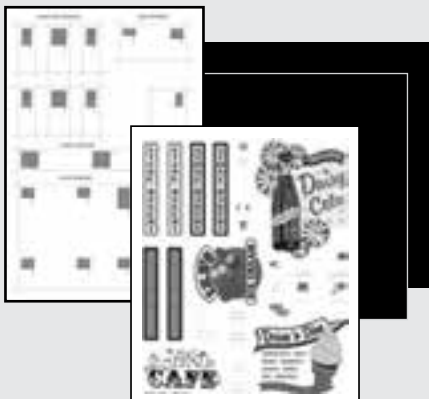
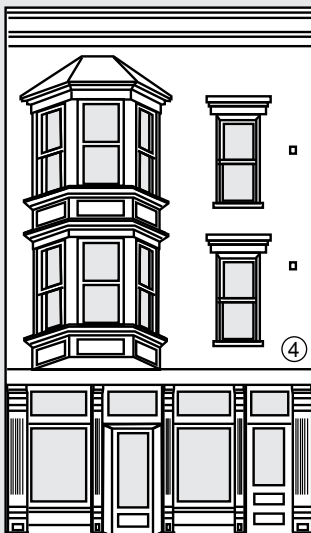
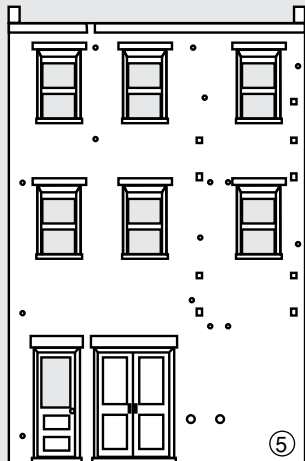
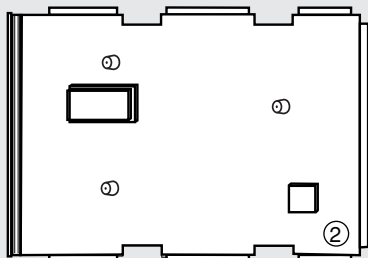


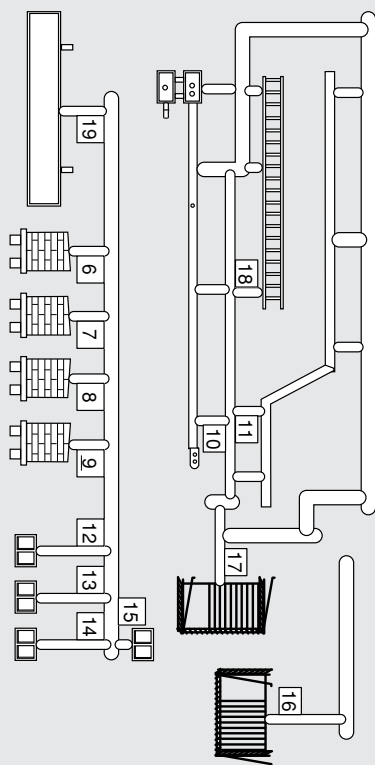
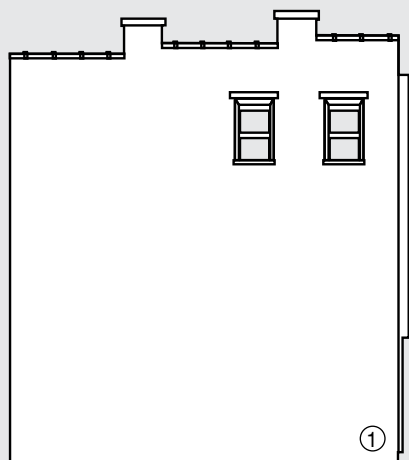
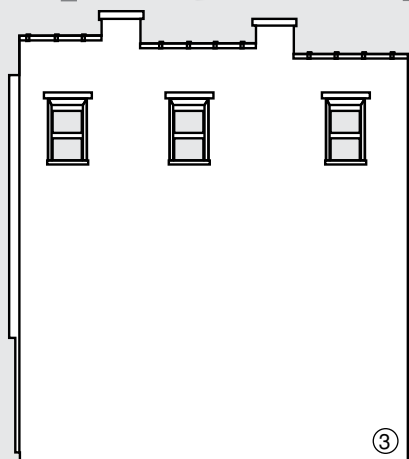
MODELING AND CARE INFORMATION

This kit suggests the use of materials (plastic cement and/or model paints) which may stain or cause damage. Take care to cover project area and clothing appropriately. Follow manufacturers' recommendations for use and clean up.

Building Kit Contents

- 4 Walls and Roof
- Sprue with Details
- Window Details (Clear Window Material and Pre-printed Window Treatments)
- Dry Transfer Decals
- Blackout Paper (2 pcs)





Walls, Roof and Details are numbered for ease of installation.

Before You Begin

- Read through instruction booklet.
- Collect additional needed supplies.
- Check kit contents.
- Cover project area with newspaper.

Additional Supplies

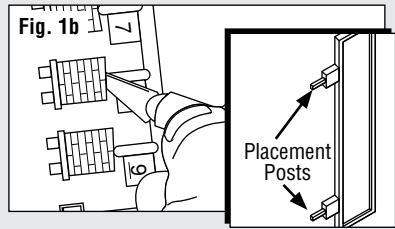
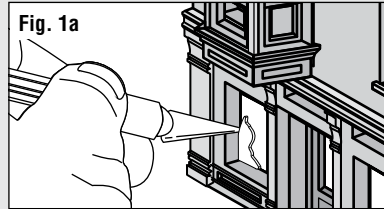
- | | | |
|--|---|------------------------------------|
| <input type="checkbox"/> Plastic Cement* | <input type="checkbox"/> Primer* | <input type="checkbox"/> Scissors |
| <input type="checkbox"/> Paints* (acrylic or enamel) | <input type="checkbox"/> Fine Grit Sandpaper | <input type="checkbox"/> Tweezers |
| <input type="checkbox"/> Hobby Knife | <input type="checkbox"/> Painting Tools | <input type="checkbox"/> Newspaper |
| <input type="checkbox"/> Flush Cutting Shears (optional) | <input type="checkbox"/> Burnisher or Dull Pencil | |

NOTE: Plastic cement works by dissolving the surface of plastic and welding parts together. Always allow glue to set before moving to the next step.

*Contact your local hobby shop for recommendations.

1. Building and Detail Preparation

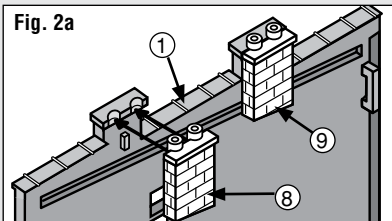
- Remove any mold flash from Walls using a hobby knife and sandpaper. **(Fig. 1a)**
- Pay special attention to mold flash and/or foreign debris in grooves that could inhibit proper assembly.
- Wash Walls, Roof and Details (on sprue) in warm, soapy water using a mild detergent. Rinse and let dry.
- Remove Details from sprue using a hobby knife (or flush cutting shears). **NOTE:** Do not remove placement posts. **(Fig. 1b)**
- Sand off any mold flash and parting lines from Details. **NOTE:** Do not sand placement posts.



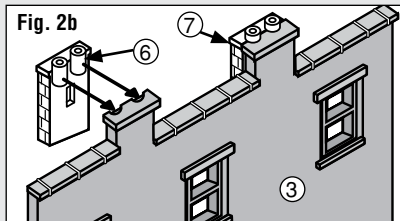
2. Chimney Assembly

NOTE: Make sure the angle on bottom of Chimney is pointing down toward back of building.

- Glue on Chimney 4x (6,7,8,9). **(Fig. 2a and Fig 2b)**



Left Wall ①



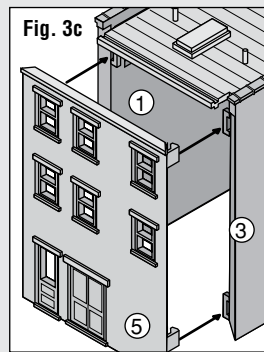
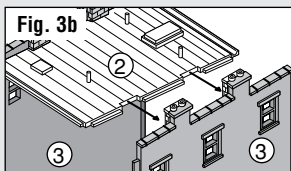
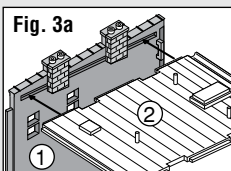
Right Wall ③

3. Building Assembly

NOTE: Roof slants front to back. Position guttering toward Back Wall.

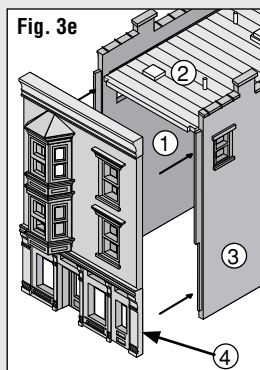
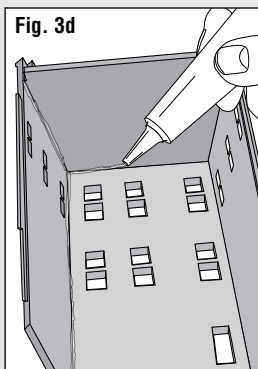
Building Walls and Roof are designed to fit together in a specific pattern. Assemble and glue as indicated.

- Align Roof ② with Left Wall ① and press together. **(Fig. 3a)**
- Align Right Wall ③ with Roof ② and press together. **(Fig. 3b)**
- Align Back Wall ⑤ with Left Wall ① and Right Wall ③ and snap together. **(Fig. 3c)**



3. Building Assembly cont.

- Once parts are properly aligned, apply glue along inside seams. (**Fig. 3d**)
- Align and install Front Wall ④. (**Fig. 3e**)
- Apply glue along inside seams.

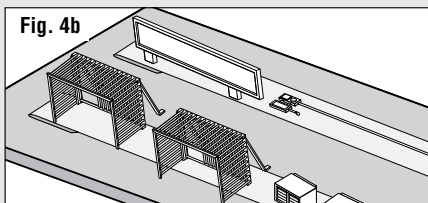
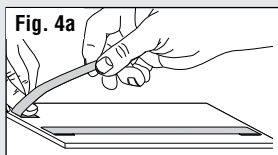


4. Prime and Paint

NOTE: Do not prime or paint placement posts.

- Apply a thin coat of primer to Building and Details.
- Allow to dry.
- Paint Building and Details, as desired.
- Allow to dry.
- **Optional:** Add a realistic mortar-look (see *Tips and Techniques*, page 6).

TIP: Taping Details (unexposed side down) to loops of masking tape on a piece of cardboard makes priming and painting easier. (**Fig. 4a and Fig. 4b**)

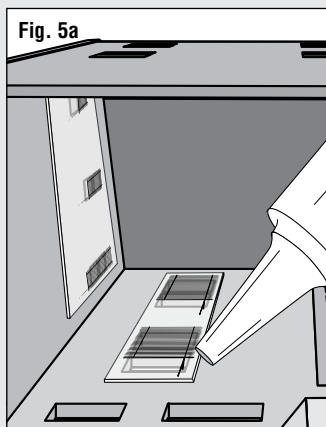


5. Window Details

You have two options for window details: Clear Window Material or Pre-printed Window Treatments*.

TIP: To make it easier to use the Clear Window Material, place it over Pre-printed Window Treatments sheet and trace cut-lines with a fine-tip permanent marker.

- Cut preferred window details, as needed.
- Place Building on its front face with the bottom toward you.
- Center window detail over window on inside of Building. (**Fig. 5a**)
- Carefully dab a small amount of glue around edges of window detail. (**Fig. 5a**)
- Repeat for each set of window openings.



*Position printed side of window treatment toward inside of Building.

6. Decal Application

NOTE: Test fit Signboard (19) on building before applying Dry Transfer Decal. You don't want your sign upside-down!

- Cut out Decals, leaving a slight edge. (Fig. 6a)
- Grasp edge of Decal with tweezers; avoid handling the back.
- Position in desired location and rub over entire Decal area with burnisher or dull pencil. (Fig. 6b)
- Carefully lift away carrier sheet.
- Place backing paper over Decal and rub again for maximum adhesion.

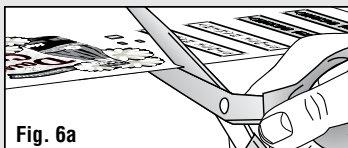


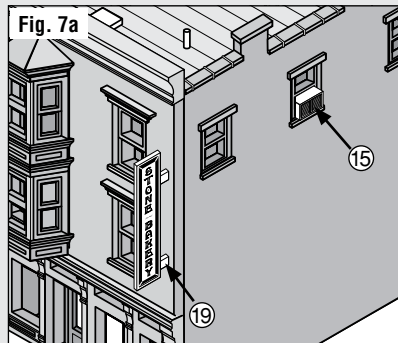
Fig. 6a



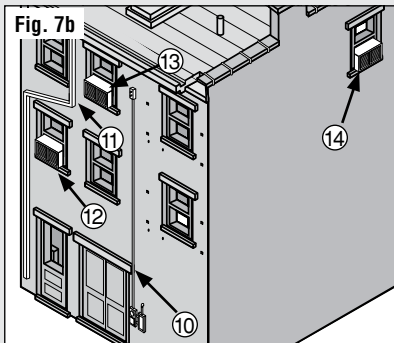
Fig. 6b

7. Install Details

Follow the schematic for installing details. Attach using plastic cement.



Front and Right Side (Fig. 7a): Window Air Conditioner (15), Signage (19)



Back and Left Side (Fig. 7b): Electric Meter and Junction Box (10), Downspout (11), Window Air Conditioners 3x (12,13,14)

8. Fire Escape and Ladder

- Apply glue to third floor Fire Escape (16) placement posts, install as illustrated. (Fig. 8a)
- Apply glue to second floor Fire Escape (17) placement posts, install as illustrated. (Fig. 8b)
- Apply glue to Fire Escape Ladder (18) placement posts, install as illustrated. (Fig. 8c)

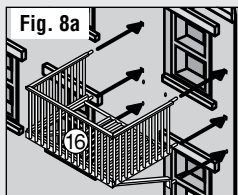


Fig. 8a

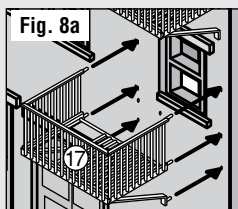


Fig. 8a

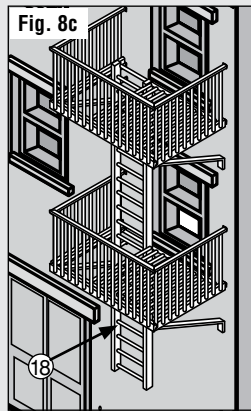


Fig. 8c

9. Blackout Paper Installation

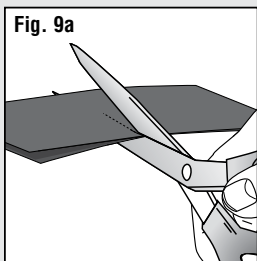


Fig. 9a

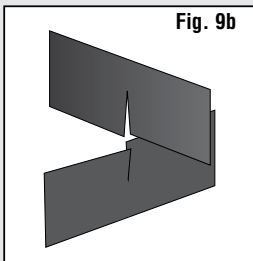


Fig. 9b

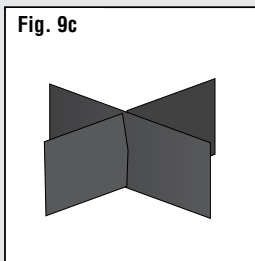


Fig. 9c

- Lay the two sheets of Blackout Paper on top of each other, then cut a notch half-way up the paper. (Fig. 9a)
- Assemble Blackout Paper as shown. (Fig. 9b and 9c)
- Insert into Building. (Fig. 9d)
- Place a drop of glue at each corner of Blackout Paper to hold in place.

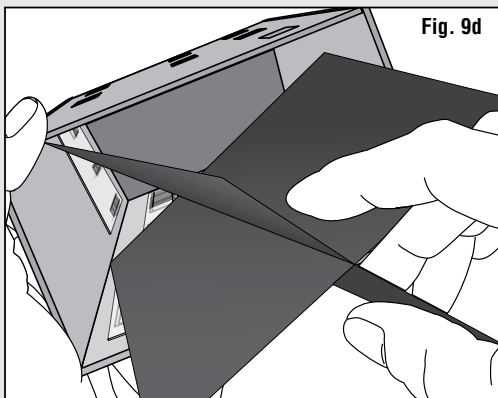


Fig. 9d

TIPS AND TECHNIQUES

Concrete Mortar

- To add a realistic mortar-look, apply a **Concrete Mortar Wash** to brickwork (formula below). Lay building flat so the wash will spread evenly. Dab on small amounts until desired look is achieved. Sponge off excess. Avoid decals.

Concrete Mortar Wash: 1-part acrylic, concrete colored paint, 12-parts rubbing alcohol, 8-parts water, 1-drop liquid dish soap

Weathering

- Age decals by scoring and chipping with a hobby knife.
- **Airbrushing Technique:** Lightly spray thinned flat black paint to select areas. Add more where discoloration can occur (near windows, chimneys, etc.).
- Rub dark pastel chalk (gray, black, brown, etc.) on sandpaper to create chalk dust. Using a paintbrush, dab chalk dust where discoloration can occur.

Visit www.woodlandscenics.com for more great Building Tech Tips.

YOU WILL ALSO LIKE:

First Bank #12200

First Bank is a realistic stately representation of an early 1900's Neoclassical-styled Main Street corner building with etched stone fluting and a chiseled roofline parapet. Period details include clear windows, window treatments, corner-hung sign with signature Roman numeral clock, rooftop ductwork, chimneys, downspout, exterior flag pole bracket and Old Glory.



Design

- Each building is a unique architectural work of art
- Researched and designed by an architect
- Illustrates a superior standard of craftsmanship

Details

- Period-authentic ornamentation
- Realism captured in crafted details like rooftop chimneys, ductwork and drainage
- Thick styrene plastic construction ensures structure stability
- Dry transfer decals add color and interest

Assembly

- State-of-the-art interlocking wall alignment system for accurate construction
- Finished edges reduce prep time and streamline assembly

We make every effort to ensure our kits are manufactured complete. However, if this kit is missing a part, please make note of the kit's model number and missing part, and contact the Woodland Scenics Sales and Customer Service Department at P.O. Box 98, Linn Creek, MO 65052, 573-346-5555 or sales@woodlandscenics.com.

XINST12300 ©2009 OCO Printed by a certified Green Printer