

LANDMARK STRUCTURES®

O SCALE
1:48
BUILDING KIT

CORNER EMPORIUM PF5893

Model a vintage storefront where town residents patronize the local specialty shops of the Corner Emporium. The positive alignment system ensures a quick, accurate assembly, and the pre-finished edges reduce preparation time. Kit includes lots of scene-setting accessories, such as bicycles, signage, barber shop pole, outdoor parlor table and chairs, flag, drainage, awnings and more!

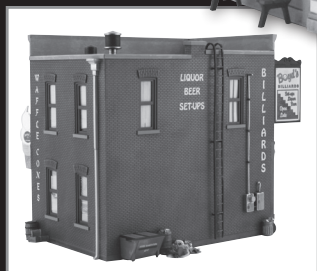
MODELING AND CARE INFORMATION

This kit suggests the use of materials that may stain or cause damage. Take care to cover project area and clothing appropriately. Follow recommendations for use and clean up.

CAUTION

Cutting tools recommended. Use with care.

This item is not a Children's Product and is not intended for use by Children.



WOODLAND SCENICS®

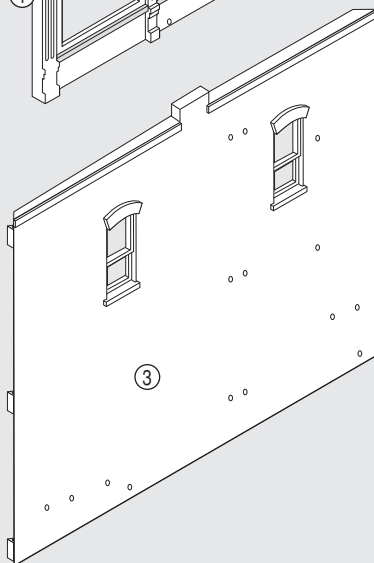
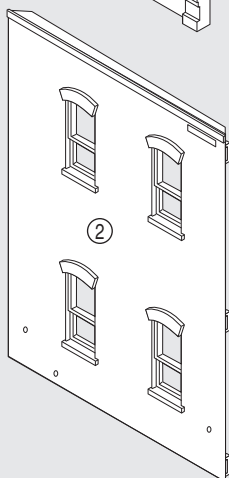
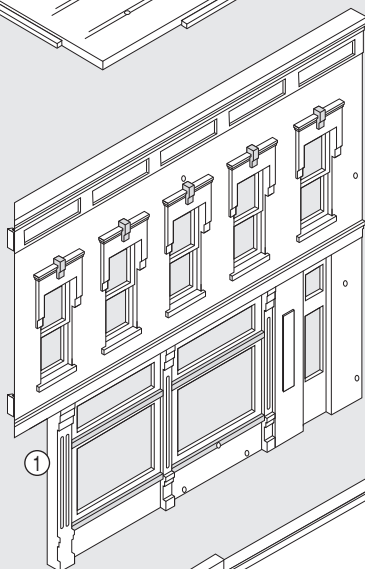
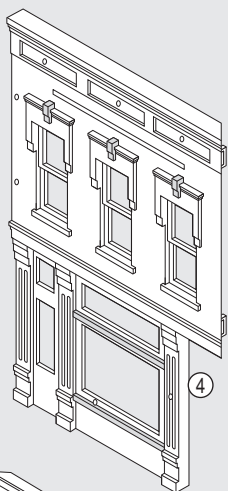
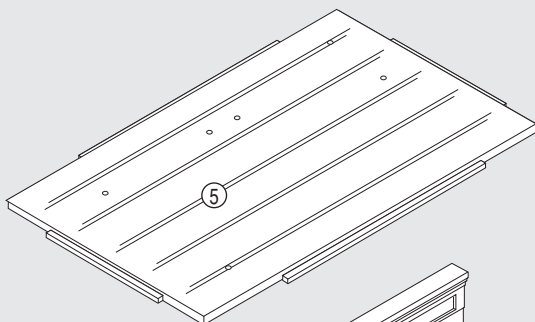
We make every effort to ensure our kits are manufactured complete. However, if this kit is missing a part, please make note of the kit name, number and missing part and contact the Woodland Scenics Sales and Customer Service Department at PO Box 98, Linn Creek, MO 65052, 573-346-5555 or sales@woodlandscenics.com.

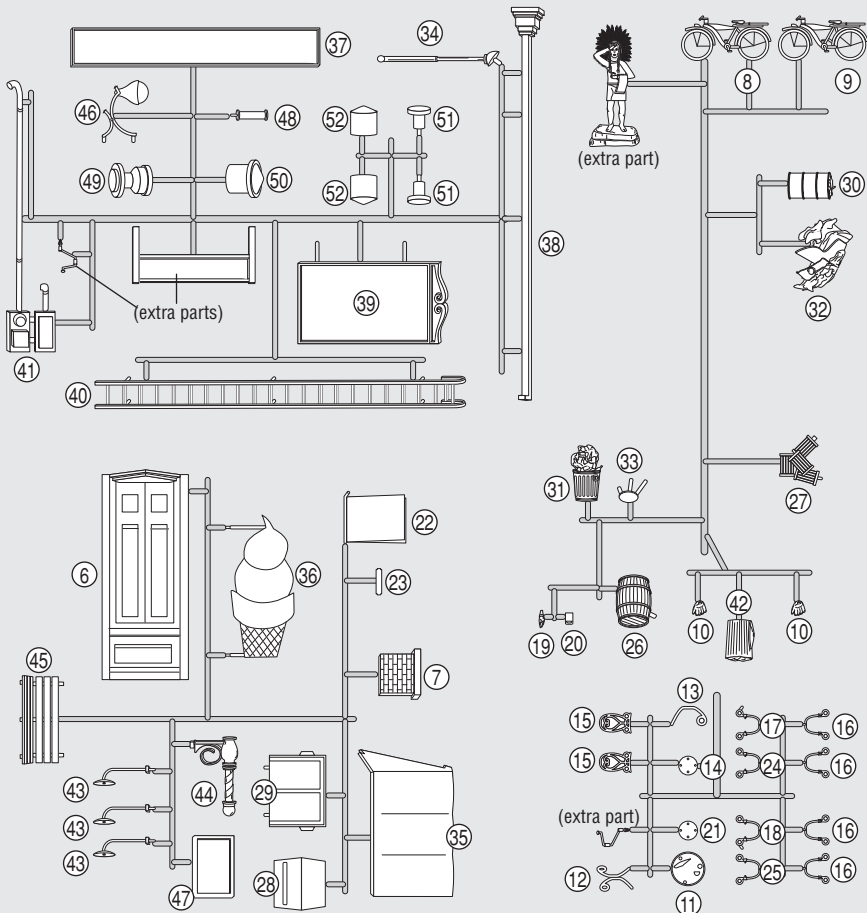
XPf5893INST F5 ©2013 O CO
Printed by a certified Green Printer

CORNER EMPORIUM

Building Kit Contents

- Wall and Roof Sections
- Sprues with Details
- Printed Window Material
- Clear Window Material
- Dry Transfer Decals
- Printed Interior (3 pcs)
- Flag
- Blackout Paper





Before You Begin

- Read through instructions.
- Check kit contents and verify Details.
- Collect additional supplies.
- Cover project area with newspaper.

TIP! To assist in assembly, refer to exploded-view illustration on back of box.

Additional Needed Supplies

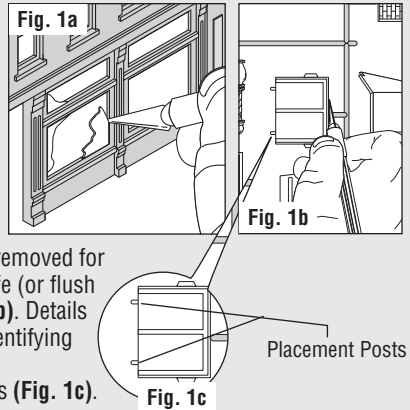
- | | |
|--|---|
| <input type="checkbox"/> Model Glue or Solvent-Based Plastic Cement* | <input type="checkbox"/> Fine-grade Sandpaper |
| <input type="checkbox"/> Paints (acrylic and/or enamel)* | <input type="checkbox"/> Clear Tape |
| <input type="checkbox"/> Primer* | <input type="checkbox"/> Tweezers |
| <input type="checkbox"/> Painting Tools | <input type="checkbox"/> Scissors |
| <input type="checkbox"/> Hobby Knife / Flush Cutting Shears | <input type="checkbox"/> Ruler |
| <input type="checkbox"/> Cyanoacrylate Adhesive (CA glue / super glue) | <input type="checkbox"/> Newspaper |

NOTE: Allow glue to set before moving to the next step. Plastic cement works by dissolving the surface of plastic and welding parts together. Avoid contact with detail on parts.

*Contact your local hobby shop for recommendations.

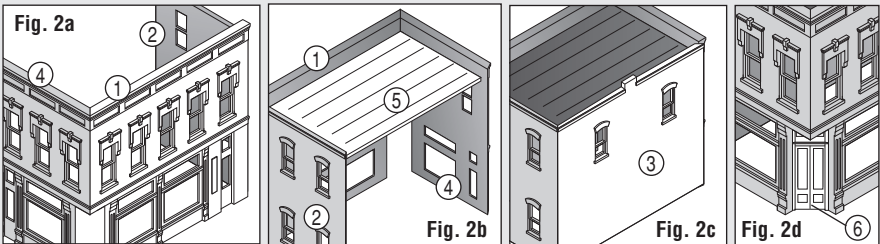
1. Prepare Building Parts and Details

- Remove mold flash from Wall Sections, Roof and Details using a hobby knife and sandpaper (**Fig. 1a**). Make sure grooves in Wall Sections are free of mold debris. Do not remove Details from sprues at this time.
- Wash Wall Sections, Roof and Details in warm, soapy water using a mild detergent. Rinse and let dry.
- Details can be left on sprues (recommended) or removed for priming and painting. Remove using a hobby knife (or flush cutting shears) and sand off parting lines (**Fig. 1b**). Details may be easier to paint on sprue. It also makes identifying them easier during assembly.
- Do not remove placement posts or installation tabs (**Fig. 1c**).



2. Assemble Building

- Snap Wall ② and Wall ④ tightly into place on Wall ① (**Fig. 2a**).
- Align tabs on Roof ⑤ into grooves in Walls ①, ② and ④ (**Fig. 2b**).
- Snap Wall ③ tightly into place (**Fig. 2c**). Lighting raceways on Wall ③ and Roof should align.
- From underneath Building insert Front Door ⑥, aligning tabs and grooves (**Fig. 2d**).
- Square and align Walls and Roof and apply glue along inside seams and onto tabs.

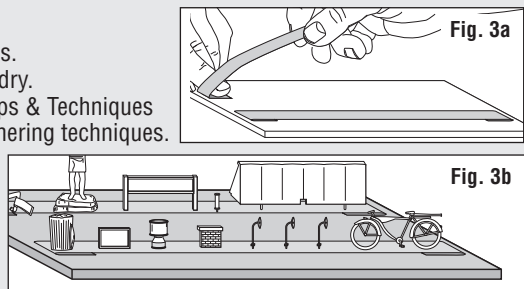


3. Prime and Paint

Do not prime or paint placement posts.

- Apply a thin coat of primer and let dry.
- Paint as desired and let dry. See Tips & Techniques on pg. 6 for painting tips and weathering techniques.

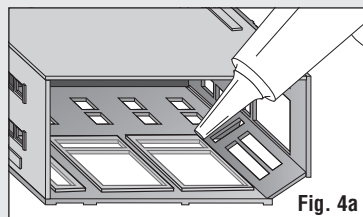
TIP! To make priming and painting loose Details easier, secure them to strips of masking tape (sticky side up) attached to a piece of cardboard (**Fig. 3a and 3b**).



4. Install Window Material

Position Printed Window Material on inside of Building. Remove protective film before installation. If clear windows are preferred, use Clear Window Material.

- Align Window Material over corresponding windows on inside of Building. Dab a small amount of glue carefully around edges (**Fig. 4a**).
- Repeat for each set of window openings.



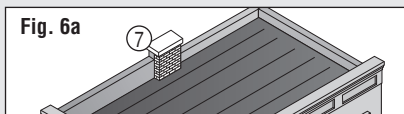
5. Apply Dry Transfer Decals

Dry Transfer Decals are included for Sign Board (22), Awning (35), Ice Cream Parlor Sign (36), Rectangular Billiard Sign (37), Billiard Sign (39) and Dumpster Front (28).

- Cut out desired Decal. Avoid handling the back and position in desired location. Rub over entire Decal with a burnisher or dull pencil.
- Lift away carrier sheet carefully. If Decal did not transfer completely, let carrier sheet fall back in place and burnish again.
- Place backing paper over Decal and burnish again for maximum adhesion.
- If applying onto textured surface, press Decal into texture with a pencil eraser.

6. Install Chimney Back

- Align and glue Chimney (7) (Fig. 6a).

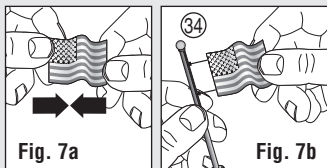


IMPORTANT Assemble and install Details using Cyanoacrylate Adhesive (CA glue / super glue). If Details were left on sprue while painting, remove using a hobby knife (or flush cutting shears). Sand parting lines and touch-up with paint. Details have unique placement posts for predetermined locations. Test fit Details before gluing.

7. Preassembly

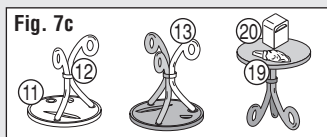
Flag

- Hold Flag by edges and push toward center for a “waving” look (Fig. 7a).
- Glue Flag into notch in Flag Pole (34) (Fig. 7b).



Ice Cream Parlor Table (Fig. 7c)

- Glue Double Table Legs (12) to underside of Table Top (11). Position placement posts in smaller placement holes.
- Glue Single Table Leg (13) into placement hole and to Double Table Legs (12).
- Glue Melted Ice Cream Cone (19) and Napkin Holder (20) to Table Top.

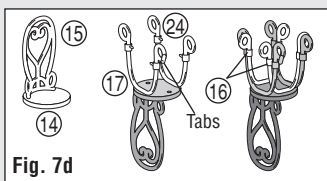


Ice Cream Parlor Chairs

Assemble carefully. Note direction of Chair Back when attaching Chair Legs with placement post. This will determine position of Chair when installed.

Chair on Left (Fig. 7d)

- Glue Chair Back (15) to Chair Seat (14).
- Glue Left-Hand Chair Legs with placement post (17) to Chair Seat (14). Glue Chair Legs (24) opposite Chair Legs (17).
- With notches in Chair Legs x2 (16) facing tabs on Chair Legs (17) and (24), glue in place.



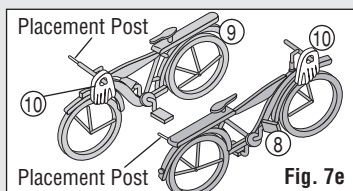
Chair on Right (Assemble in same manner as Chair on Left)

- Glue Chair Back (15) to Chair Seat (21).
- Glue Right-Hand Chair Legs with placement post (18) to Chair Seat (21). Glue Chair Legs (25) opposite Chair Legs (18).
- With notches in Chair Legs x2 (16) facing tabs on Chair Legs (18) and (25), glue in place.

Bicycles (Fig. 7e)

- Slide Baseball Gloves x2 (10) onto handlebars on Bike (8) and Bike (9).

NOTE: Glue Gloves on opposite side of placement posts.



7. Preassembly cont.

Sign Board

- Glue Sign Board Connector (23) to Sign Board (22) (Fig. 7f).

Dumpster

- Glue Dumpster Front (28) to Dumpster Frame (29) (Fig. 7g).

Large Roof Vent

- Glue Large Roof Vent Base (49) to Large Roof Vent Top (50) (Fig. 7h).

Trash Pile

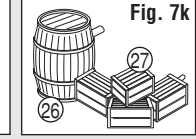
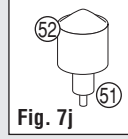
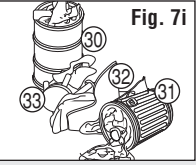
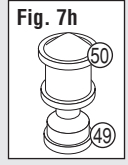
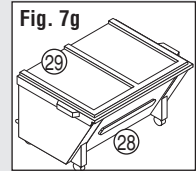
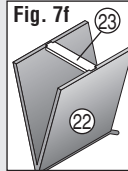
- Glue Trash Barrel (30), Spilled Trashcan (31) and Broken Stool (33) to Trash Pile (32) (Fig. 7i).

Roof Vents

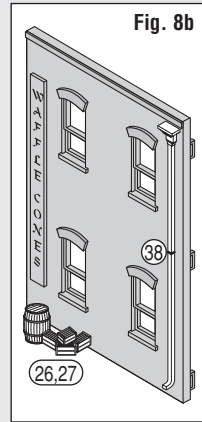
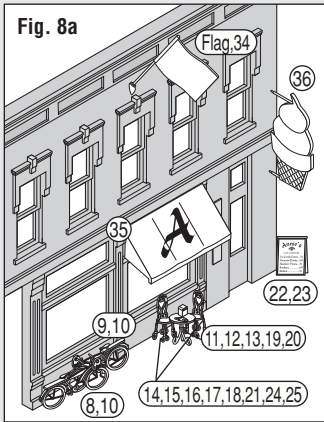
- Glue Vent Bases x2 (51) to Vent Tops x2 (52) (Fig. 7j).

Barrel / Crates Grouping

- Glue Barrel (26) to Pile of Crates (27) (Fig. 7k).



8. Install Details on Building



Front (Fig. 8a)

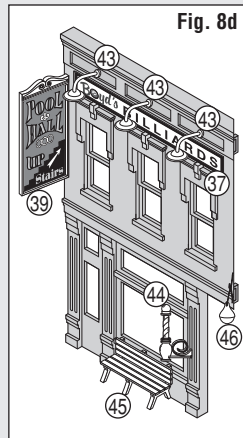
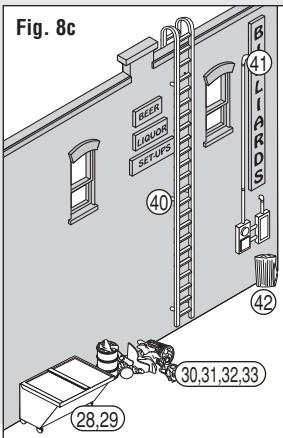
- Flag Assembly (Flag 34, Bike 9,10, Bike 8,10, Ice Cream Parlor Chairs 11,12,13,19,20, Ice Cream Parlor Table 11,12,13,19,20, Sign Board 22,23, Awning 35, Ice Cream Parlor Sign 36)

Right Side (Fig. 8b)

- Barrel/Crates Grouping (26,27), Drainage (38)

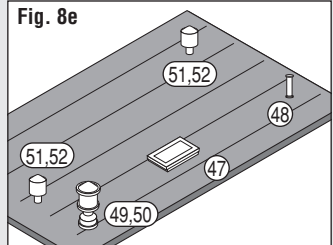
Back (Fig. 8c)

- Dumpster Assembly (28,29), Trash Pile Assembly (30,31,32,33), Ladder (40), Electric Meter and Junction Box (41), Trashcan (42)



Left Side (Fig. 8d)

- Rectangular Sign (37), Lights x3 (43), Billiard Sign (39), Barber Pole (44), Bench (45), Entry Light (46)



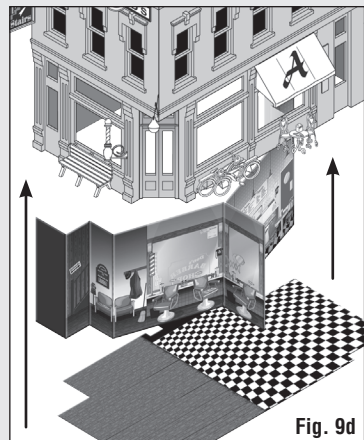
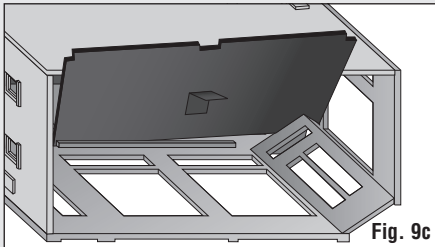
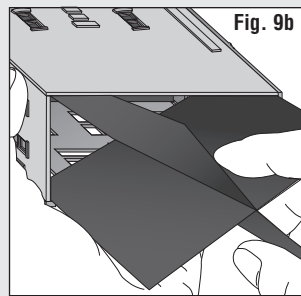
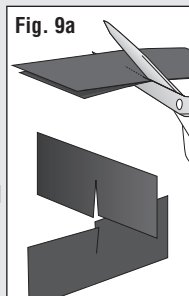
Roof (Fig. 8e)

- Hatch (47), Pipe Vent (48), Large Vent (49,50), Vents x2 (51,52)

9. Printed Interior & Blackout Paper

The Printed Interior and Blackout Paper add life and interest to the building.

- Cut two sheets of Blackout Paper, each measuring 8 1/2" L x 2 1/4" H. Place sheets on top of each other and cut a notch half-way up (**Fig. 9a**). Assemble and insert into Building diagonally (**Fig. 9b**). Tape to interior Walls to hold in place.
- Hold solid Black Insert by the tab. Insert into Building at an angle, aligning cutouts for lighting raceway and installation tabs (**Fig. 9c**). Black Insert sets on top of Entry Door and lip on Front and Back Walls. Tape in place along interior Walls.
- Fold Printed Interior along score lines. Insert into Building, aligning in between windows of two shops (**Fig. 9d**).
- Install Flooring Insert, aligning notch for lighting raceway (**Fig. 9d**). Tape in place along bottom edge of Back Wall.



10. Blackout Paper Only (Option)

Use Blackout Paper without the Printed Interior set.

- Cut two sheets of Blackout Paper, each measuring 8 1/2" L x 6-1/8" H.
- Assemble and install as in Step 9 (**Fig. 9a and 9b**).

Tips and Techniques

Lighting

Corner Emporium has a lighting raceway and generic light socket. To reduce glare, paint interior walls and underside of roof a flat, earth-tone shade.

Painting

Airbrush or Hand-brush Use enamel (solvent-based) or acrylic (water-soluble) flat finish paint.

Aerosol Use flat finish spray paint.

Weathering Techniques

Mortar Wash Create the look of brick mortar or add a weathered look (formula follows). Lay building flat so wash spreads evenly. Using a paintbrush, dab on small amounts of Mortar Wash until desired look is achieved. Sponge off excess.

Formula: Mix 1-part acrylic paint (color suggestion: concrete or aged concrete), 12-parts rubbing alcohol, 8-parts water and 1 drop liquid dish soap.

Airbrush Spray thinned flat black paint lightly onto select areas (color suggestion: grimy black). Add more where discoloration occurs naturally (near windows, roof details, etc.).

Chalk Rub a dark color of pastel chalk on sandpaper to create chalk dust (color suggestion: gray, black, brown, etc.). Using a paintbrush, dab chalk dust where discoloration can occur.

Decals Age Decals by scoring and chipping with a hobby knife.

Look for These Other O Scale Landmark Structures Building Kits at Your Local Hobby Shop



**Lubener's General
Store PF5890**



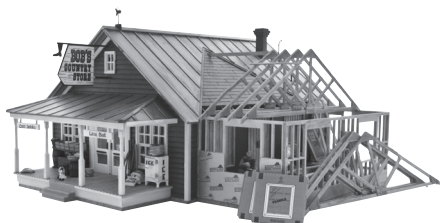
**Harrison's
Hardware PF5891**



**J.W. Cobbler
PF5892**



**Deuce's Bike Shop
PF5895**



**Country Store
Expansion PF5894**