

#516 Wilhelmi's Mercantile

Please read instructions first. Glue with plastic model cement or solvent. These work by dissolving plastic, so avoid contact with detail. Always allow glue to dry thoroughly before going to next step in construction. **Note:** Thin excess plastic on edges of some parts ("flash") is caused by the molding process; "tabs" also are a result of the molding process. Remove "flash" and "tabs" by cutting with Fiskars Diagonal Cutters (handy, flush-cutting tool available at hobby and craft stores) or by scoring with hobby knife (X-Acto), flush with part and snapping off. Sand, leaving a clean edge. Never sand or cut into detail on parts.

Note: Some walls have alignment pins molded into their smooth back sides to assist you in proper alignment of parts. DO NOT REMOVE THESE PINS!

1. **Chimneys:** Chimneys are formed from two pieces. Chimney front is molded into a wall. Chimney back is a separate piece, 516-5. Sand bottom edge of each chimney back 516-5 flat to remove angle (draft angle formed by molding process) so roof will fit snugly against bottoms of completed chimneys. Glue chimney backs 516-5 to molded-in chimney fronts on wall 516-3 (Fig. 1). When glue is dry, sand tops of chimneys flat if necessary.

2. **Front Wall Assembly:** Front walls 516-1 and 516-2 each have a 45 degree angle on one end where they will be joined together (Fig. 1). To square walls, temporarily place roof in position. The roof will square building. Carefully fit and glue walls 516-1 and 516-2 together at seam and set front wall assembly aside to dry.

3. **Rear and Side Wall Assembly:** The edges of all parts are angled (draft angle) so they may be removed from the mold. It is necessary to remove this angle from both edges of side wall 516-4 and right edge of rear wall 516-3. Butt side wall 516-4 against alignment pins in rear wall 516-3 (Fig. 1). Check seams to assure perfect fit. To square side and rear walls, temporarily place roof in position. The roof will square up building. Glue walls' seam and allow to dry.

4. **Note:** Before installing the roof, paint it "Grimy Black" and set it aside to dry.

5. **Attaching Front Wall Assembly to Rear and Side Wall Assembly:** After glue has thoroughly dried on both assemblies, butt wall 516-3 against alignment pins on 516-2, and butt wall 516-4 against alignment pins on wall 516-1 (Fig. 1). Carefully glue assemblies together. Several rubber bands will help keep the assemblies together while you adjust the sides to each other.

6. **Painting:** For airbrushing, our preferred method of painting, we recommend flat finish solvent-based enamel paints such as Floquil®. Use water-soluble flat paint such as "Polly S" for hand brushing. Colors are your choice. **Note:** We do recommend over-spraying the whole building with a light, uneven coat of "Grimy Black" to "weather" it and give it the appearance of being around a long time.

7. **Roof Assembly:** Trial fit roof 516-6 by sliding it under chimney bottoms from the front (Fig. 2). Rear of roof butts to underside of chimneys and the opposite

Fig. 1

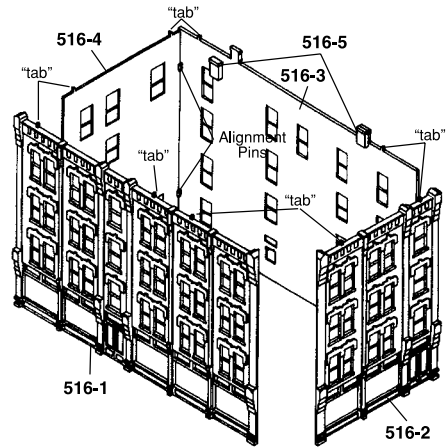
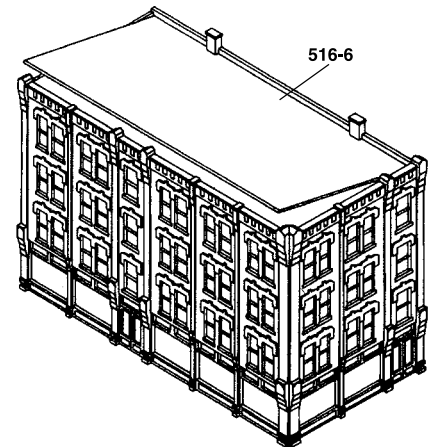


Fig. 2



(instructions continued on back)



Wilhelmi's Mercantile
#516



N SCALE
STRUCTURE KIT

N SCALE

(instructions continued)

side rests on alignment pins molded into 516-1. If roof does not quite fit, sand edge or edges as necessary. Install roof and apply glue to roof-wall joints from underside of building. Allow to dry.

8. **Windows:** From a sheet of clear window material, cut a 7/8" x 2 1/4" strip from one end and glue horizontally in place on wall 516-1 behind the first three fourth floor windows closest to corner formed by walls 516-1 and 516-2. Glue remainder of this piece of window material horizontally behind the windows directly below (first through third floor). Glue a full sheet of window material vertically behind remaining openings on wall 516-1. Place one full piece of window material vertically behind wall 516-2 and glue in place. Place two full pieces vertically side by side behind wall 516-3 and glue in place. Place one full piece vertically behind wall 516-4 and glue in place.

9. **Finishing Touches:** To give your building the illusion of being occupied, place a piece of black construction paper diagonally from corner to corner inside the building to block the light.

Wilhelmi's Mercantile is an example of typical American Victorian architecture, it is a versatile commercial building. Originally designed and built during the latter half of the nineteenth century, buildings of this type are still widely in use in towns and cities in most parts of the United States. Thanks to historical preservation groups, many buildings such as this have been revitalized and are home to a wide variety of business and commercial enterprises.



Vehicles, figures and decals not included.

#516
WILHELMI'S
MERCANTILE

5 1/4"W x 2 5/8"D x 3 3/4"H



7 81324 00516 1
MADE IN USA W3 ©1996 OCO

Design Preservation Models
P.O. Box 66, Linn Creek, MO 65052
www.dpmkits.com