

#512 Roadkill Cafe

Please read instructions first. Glue with plastic model cement or solvent. These work by dissolving plastic, so avoid contact with detail. Always allow glue to dry thoroughly before going to next step in construction. Note: Thin excess plastic on edges of some parts (called "flash") is caused by the molding process; "tabs" also are a result of the molding process. Remove "flash" and "tabs" by cutting with Fiskars Diagonal Cutters (handy, flush-cutting tool available at hobby and craft stores) or by scoring with hobby knife (X-Acto) flush with part and snapping off. Sand, leaving a clean edge. Never sand or cut into detail on parts.

1. The edges of all parts are angled (draft angle) so they can be removed from the mold. It is necessary to remove this angle from the front edges of the side walls 512-2 and 512-4 and both edges of the back wall 512-3 to allow flush fit with adjoining walls. Note: The edges to be squared do not have brick detail and are marked "A" (Fig. 1). To square the edges, thumbtack a piece of 150 grit sandpaper to a board and push and pull the part back and forth evenly on the sandpaper until the edge is square with the wall (Fig. 2).

2. Cut two entry door side panels 512-7 from white styrene stock (.156" x .02"). Make them the same height as the entry door casting 512-8. Glue side panels to entry door as shown (Fig. 1 and 3). Now glue fronts of side panels to back of entry door on building front (Fig. 3).

3. Chimney backs: Lightly sand bottom edge of chimney backs 512-5 flat to remove draft angle. The styrene roof 512-9 will be glued to the bottoms of the two chimneys. Glue the chimney backs against the proper chimney fronts (on the side walls). After the glue has completely set, file tops flat and square.

4. Wall Assembly: Glue front wall 512-1 to either side wall. Try to match the brick courses at the glue joint while keeping the bottoms of the walls flush. Make sure the two walls are square to each other. You might want to use the styrene roof as a square. Allow joint to set completely. Now glue the remaining walls to each other and to the first assembly. Several rubber bands will help keep the whole thing together while you adjust the sides to each other (Fig. 3).

5. Roof: Measure and cut to size. Paint the roof "Grimy Black" and set it aside to dry.

6. Leveling: Carefully sand bottom of building in a circular motion to level all bottom edges so building will sit squarely on your layout.

7. Painting: For airbrushing, our preferred method of painting, we recommend flat finish solvent-based enamel paints such as Floquil®. Use water-soluble flat paint such as "Polly S" for hand brushing. Colors are your choice. Note: We do recommend over-spraying the whole building with a light, uneven coat of "Grimy Black" to weather it and give it the appearance of being around a long time.

(instructions continued on back)

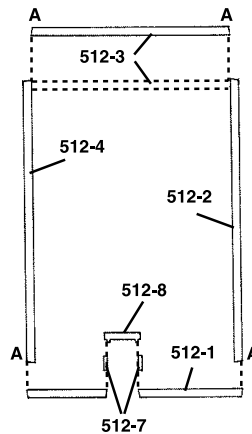


Fig. 1
Plan (View from Top)

Fig. 2
Sand edges square.

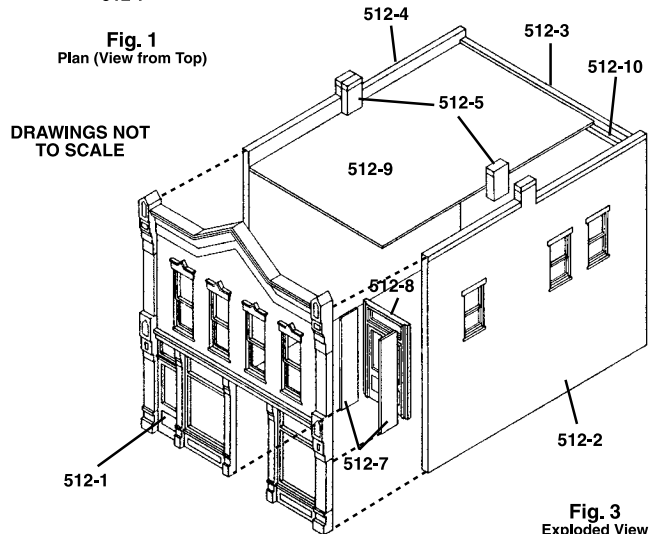
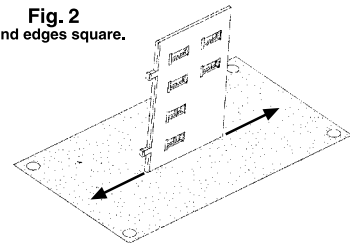


Fig. 3
Exploded View



Roadkill Cafe
#512



N SCALE
STRUCTURE KIT

N SCALE

(instructions continued)

8. Windows: Cut clear plastic material to size and install over entire area of window openings at one time.

9. Install roof through bottom of building and glue to the bottom of chimney backs (Fig. 3). Cut two roof supports 512-10 to fit between the side walls. Glue one roof support to the bottom of roof and the back of front wall...the other roof support to the bottom of the roof and the back of the rear wall.

10. Finishing Touches: To give your building the illusion of being occupied, place a piece of black construction paper diagonally from corner to corner inside the building to block the light.

The Roadkill Cafe is an example of American commercial Victorian architecture from Main Street, Anytown, USA. This beautiful and fanciful style dominated building design during the latter half of the Nineteenth Century. Examples are found in most U.S. towns and cities - especially "down by the tracks".

With its cast iron front and separate entry way to the upstairs offices/apartments, Roadkill Cafe is appropriate for almost any kind of retail store on Main Street or a side street. This building is a composite of typical period architectural details, not a model of any specific building.



Vehicles, figures and decals not included.

#512
ROADKILL CAFE
2 1/4"W x 2 3/4"D x 2 5/8"H

