



# #509 Hilltowne Hotel

Scale Model Material

## INSTRUCTIONS

Please read through all instruction first. Use plastic model cement or solvent to adhere parts, but avoid contact with detail. Allow glue to dry thoroughly before next step. Remove flash with Fiskars or a hobby knife. Sand to clean the edge. Never sand or cut into detailed edges.

**Sand Draft Angles:** Remove draft angle (angled edges) from both edges of the end wall (509-3) and the front edge of the back wall (509-4). This will permit a right angle butt joint. To square the edges (all with no brick detail), thumbtack a piece of 150 grit sandpaper to a board and push and pull the part back and forth (Fig. 1).

**Wall Assembly:** Glue the following pairs of walls into an L-shape, square the corner, then set aside to dry: front walls (509-1 and 509-2) and (505-3 and 505-4); and back and end walls (509-3 [shorter] and 509-4 [longer]). Be certain the joint is square and that the non-detailed edge of (509-3) is glued to the back of (509-4). When dry, butt the back/end wall assembly to the front wall assembly: the (509-7) is glued to the back of (509-1) and (509-3) is glued to the back of (509-2). Be sure the corners are square and the glue is dry. Glue the main door assembly (509-8 and 509-9) together and set aside to dry. Airbrush the structure and door assembly with any acrylic paint.

**Roof and Chimney:** Place the building upside down on the roof styrene, mark the roof, then cut and trim to fit. Paint the roof black and set aside to dry.

**Roof Supports:** Glue continuous roof supports on the inside walls, about 3/16" down from the top of the short wall (509-3), and continue around the walls at the same level. Glue the roof in place. Test fit the two chimney halves (509-5). If they are too long, trim or sand to fit. You can add detail by cutting small squares from the styrene and gluing them to the roof to simulate roof hatches.

**Leveling:** Sand the bottom of the building in a circular motion to level all bottom edges.

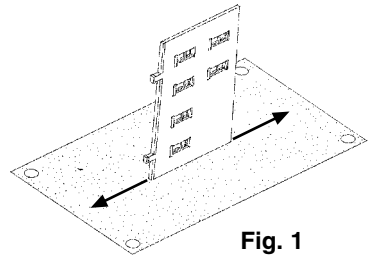
**Painting:** Use acrylic paints to airbrush the buildings. We recommend over-spraying the whole building with a light, uneven coat of black acrylic to give it a weathered look. Allow paint to dry.

**Windows:** Cut the window material to size and install over the entire area of window openings.

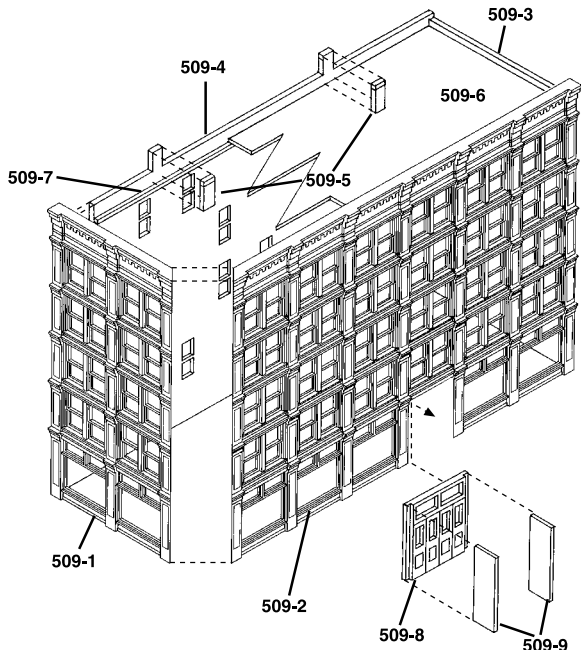
**Roofs:** Glue roofs in place.

**Finishing:** Place a piece of black construction paper diagonally inside, from corner to corner, to give the illusion that the building is being occupied.

The Hilltowne Hotel is an example of a hotel or large department store from mid- to late-Nineteenth Century America, which is still found on Main Street in many US towns and cities. The stone front was often from local quarries, with common brick used for the sides and back. Examples of this type of construction are found in the older commercial sections of town, especially "down by the tracks." The Hilltowne Hotel fits any railroading era from the Civil War to the present. The Hilltowne Hotel is a composite of typical period architectural details, not a model of any specific prototype building.



**Fig. 1**  
Sand edges square.





N SCALE  
STRUCTURE KIT



Vehicles, figures, & decals not included.

**#509**  
**HILLTOWNE HOTEL**  
**5 1/4"W x 2 5/8"D x 4 5/8"H**



Design Preservation Models  
P.O. Box 66, Linn Creek, MO 65052  
[www.dpmkits.com](http://www.dpmkits.com)

MADE IN USA

U5

©1996 OCO