

#502 Hayes Hardware

INSTRUCTIONS

Please read through all instruction first. Use plastic model cement or solvent to adhere parts, but avoid contact with detail. Allow glue to dry thoroughly before next step. Remove flash with Fiskars or a hobby knife. Sand to clean the edge. Never sand or cut into detailed edges.

Sand Draft Angles: Remove draft angle (angled edges) from the front edges of the side walls (502-2 and 502-4) and both edges of the rear wall (502-3), allowing a flush fit with adjoining walls. Square the edges marked with an "A" by thumbtacking a piece of 150 grit sandpaper to a board and pushing and pulling the part back and forth (Fig. 2).

Side Panels: Cut two entry door side panels (502-7) from white styrene stock (.156"x.02"). Make them the same height as the entry door casting (502-8). Glue the side panels to the entry door as shown (Figs. 1 and 4). Now glue the fronts of the side panels to the back of the entry opening on the building front (502-1).

Chimney Backs (Figs. 3 and 4): The styrene roof (502-9) will be glued to the bottoms of the four chimney backs. The roof slopes downward from the front of the building to the rear. Accordingly, the bottoms of the chimney backs slope in the same direction...the two (502-5) backs slope downward from the left to right and (502-6) slope the opposite way. File draft angle off bottoms of chimneys to the top will glue flush to them. Glue chimney backs in their proper places and, when joints are completely set, file tops flat and square.

Wall Assembly: Glue front wall (502-1) to either side wall. Line up the brick courses, making sure the corners are square and the bottoms of the walls are flush. Allow glue to dry thoroughly. Glue the remaining walls to each other and the first assembly. Several rubber bands will help keep the whole thing together while you adjust the sides to each other.

Cut and Paint Roof: Measure and cut roof (503-8) to size. Paint the roof with a black acrylic and set aside to dry.

(instructions continued on back)

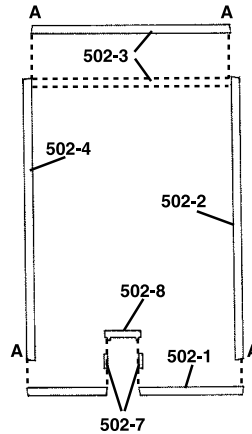


Fig. 1
Plan (View from Top)

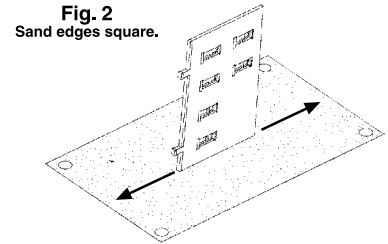


Fig. 2
Sand edges square.

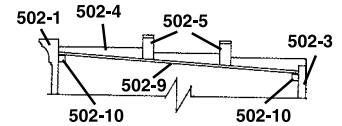


Fig. 3
Cross Section

DRAWINGS NOT
TO SCALE

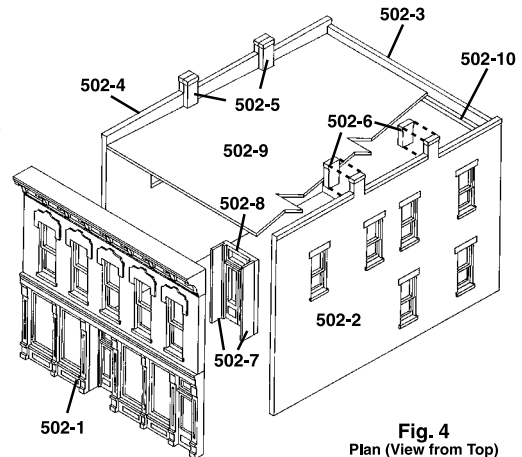


Fig. 4
Plan (View from Top)



Hayes Hardware
#502
Scale Model Material

N SCALE

(instructions continued)

Leveling: Sand the bottom of the building in a circular motion to level all bottom edges.

Painting: Use acrylic paints to airbrush the buildings. We recommend over-spraying the whole building with a light, uneven coat of black acrylic to give it a weathered look. Allow paint to dry.

Windows: Cut the window material to size and install over the entire area of window openings.

Roof Installation: Install the roof through bottom of the building and glue it to the underside of the chimney backs (Fig. 3). Cut two roof supports (502-10) to fit between side walls and glue one to the bottom of the roof and to the back of the front wall...the other to the bottom of the roof and the rear wall.

Finishing: Place a piece of black construction paper diagonally inside, from corner to corner, to give the illusion that the building is being occupied.

Hayes Hardware is an example of commercial American Victorian architecture. This beautiful and ornate style dominated building design during the latter half of the Nineteenth Century. This building is not a specific prototype, but a composite of the typical period architecture.



N SCALE
STRUCTURE KIT



Vehicles, figures, & decals not included.

#502
HAYES
HARDWARE

2 1/2"W x 3 1/4"D x 2 1/2"H



7 81324 00502 4

Design Preservation Models
P.O. Box 66, Linn Creek, MO 65052
www.dpmkits.com

MADE IN USA T12 ©1996 OCO