

#501 Bruce's Bakery

Please read instructions first. Glue with plastic model cement or solvent. These work by dissolving plastic, so avoid contact with detail. Always allow glue to dry thoroughly before going to next step in construction. Note: Thin excess plastic on edges of some parts (called "flash") is caused by the molding process; "tabs" also are a result of the molding process. Remove "flash" and "tabs" by cutting with Fiskars Diagonal Cutters (handy, flush-cutting tool available at hobby and craft stores) or by scoring with hobby knife (X-Acto) flush with part and snapping off. Sand, leaving a clean edge. Never sand or cut into detail on parts.

1. The edges of all parts are angled (draft angle) so they may be removed from the mold. It is necessary to remove this angle from the front edges of the side walls 501-2 and 501-4 and both edges of the rear wall 501-3 allowing flush fit with adjoining walls. Edges to be squared are marked "A" (Fig. 1). To square the edges, thumbtack a piece of 150 grit sandpaper to a board and push and pull the part back and forth evenly on the sandpaper until they are square (Fig. 2).

2. Cut two entry door side panels 501-7 from white styrene stock (.156" x .02"). Make them the same height as the entry door casting 501-8. Glue side panels to entry door as shown in (Fig. 1 and 4). Now glue fronts of side panels to back of entry opening on building front 501-1.

3. Chimney backs (Fig. 3 and 4). The styrene roof 501-9 will be glued to the bottoms of the four chimney backs. Note: The roof slopes downward from the front of the building to the rear. Accordingly, the bottoms of the chimney backs slope in the same direction...the two 501-5 backs slope downward from the left to right and 501-6 slope the opposite way. File draft angle off bottoms of chimneys so top of roof will glue flush to them. Glue chimney backs in their proper places and, when joints are completely set, file tops flat and square.

4. Wall assembly: Glue front wall 501-1 to either side wall. Try to match the brick courses at the glue joint while keeping the bottom of the walls flush. Make sure the two walls are square to each other. You might want to use the styrene roof as a square. Allow joint to set completely. Now glue the remaining two walls to each other and the first assembly. Several rubber bands will help keep the whole thing together while you adjust the sides to each other.

5. Roof: Measure and cut to size. Paint the roof "Grimy Black" and set aside to dry.

6. Leveling: Carefully sand bottom of building in a circular motion to level all bottom edges so building will sit squarely on your layout.

7. Painting: For airbrushing, our preferred method of painting, we recommend flat finish solvent-based enamel paints such as Floquil®. Use water-soluble flat paint such as "Polly S" for hand brushing. Colors are your choice. Note: We do recommend over-spraying the whole building with a light, uneven coat of "Grimy Black" to "weather it" and give it the appearance of being around a long time.

(instructions continued on back)

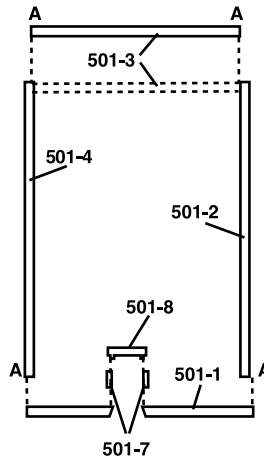


Fig. 1
Plan (View from Top)

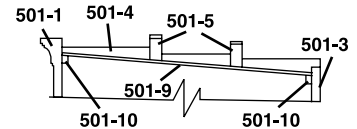
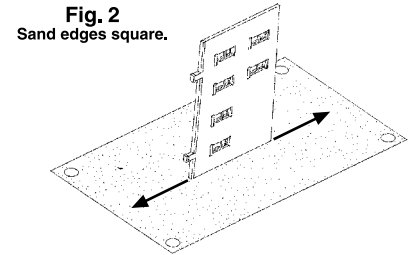


Fig. 3
Cross Section

DRAWINGS NOT TO SCALE

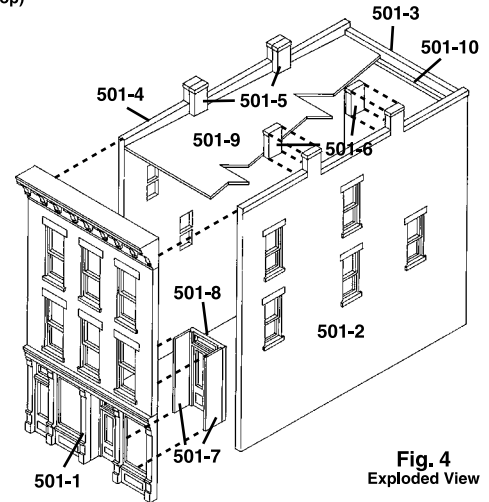


Fig. 4
Exploded View



**Bruce's Bakery
#501**



**N SCALE
STRUCTURE KIT**

N SCALE

(instructions continued)

8. Windows: Cut clear styrene material to size and install over entire area of window openings at one time.
9. Install roof through bottom of building and glue to underside of chimney backs (Fig. 3). Cut two roof supports 501-10 to fit between side walls and glue one to bottom of roof and to back of front wall...the other to bottom of roof and the rear wall.
10. Finishing Touches: To give your building the illusion of being occupied, place a piece of black construction paper diagonally from corner to corner inside the building to block the light.

Bruce's Bakery is an example of American commercial Victorian architecture. This beautiful and fanciful style dominated building design during the latter half of the Nineteenth Century. Examples are found in most towns and cities - especially "down by the tracks". This building is a composite of typical period architectural details, not a model of any specific prototype building.



Vehicles, figures, & decals not included.

**#501
BRUCE'S
BAKERY**

1 3/4"W x 3"D x 3"H

MADE IN USA

V10

©1996 OCO

Design Preservation Models
P.O. Box 66, Linn Creek, MO 65052
www.dpmkits.com

