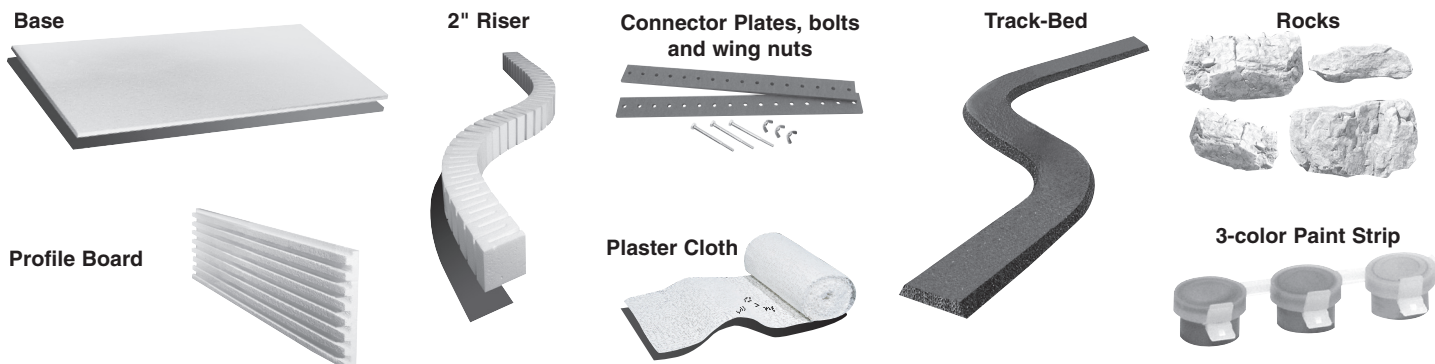


## Straight Module Kit Contents

| DESCRIPTION                          | QTY.       | DESCRIPTION                         | QTY.   |
|--------------------------------------|------------|-------------------------------------|--------|
| Base 1/2" x 18" x 36" .....          | 1          | Clump-Foliage (Med. Green).....     | 28 oz. |
| 2" Risers.....                       | 3          | Clump-Foliage (Dark Green).....     | 9 oz.  |
| Profile Boards.....                  | 4          | N scale Ballast (Fine Buff).....    | 6 oz.  |
| Connector Plates.....                | 2          | HO scale Ballast (Medium Buff)..... | 6 oz.  |
| Bolt and Wing Nut .....              | 3          | Talus (Fine/Medium Brown).....      | 2 oz.  |
| N scale Track-Bed (24" Strips).....  | 3          | Tree Armatures.....                 | 14     |
| HO scale Track-Bed (24" Strips)..... | 3          | Black Base Paint.....               | 2 oz.  |
| Plaster Cloth Roll.....              | 25 sq. ft. | Hob-e-Tac Adhesive .....            | 1 oz.  |
| Rocks.....                           | 4          | Foam Tack Glue .....                | 4 oz.  |
| 3-color Paint Strip.....             | 1          | Scenic Glue.....                    | 4 oz.  |
| Earth Undercoat .....                | 2 oz.      | Scenic Cement.....                  | 16 oz. |
| Blended Turf (Green Blend) .....     | 12 oz.     | Sprayhead.....                      | 1      |
| Fine Turf (Soil).....                | 2 oz.      | Sifter Cup .....                    | 1      |
| Fine Turf (Yellow Grass).....        | 2 oz.      | Sifter Cup Lid.....                 | 1      |
| Fine Turf (Earth) .....              | 2 oz.      | Foam Pad Applicator.....            | 1      |
| Coarse Turf (Medium Green) .....     | 18 oz.     | Stirring Sticks .....               | 2      |
| Clump-Foliage (Light Green).....     | 19 oz.     | Instructions .....                  | 1      |

## Corner Module Kit Contents

| DESCRIPTION                          | QTY.       | DESCRIPTION                         | QTY.   |
|--------------------------------------|------------|-------------------------------------|--------|
| Base 1/2" x 18" x 36" .....          | 2          | Clump-Foliage (Med. Green).....     | 28 oz. |
| 2" Risers.....                       | 4          | Clump-Foliage (Dark Green).....     | 9 oz.  |
| Profile Boards.....                  | 6          | N scale Ballast (Fine Buff).....    | 6 oz.  |
| Connector Plates.....                | 2          | HO scale Ballast (Medium Buff)..... | 6 oz.  |
| Bolt and Wing Nut .....              | 3          | Talus (Fine/Medium Brown).....      | 2 oz.  |
| N scale Track-Bed (24" Strips).....  | 4          | Tree Armatures.....                 | 14     |
| HO scale Track-Bed (24" Strips)..... | 4          | Black Base Paint.....               | 4 oz.  |
| Plaster Cloth Roll.....              | 40 sq. ft. | Hob-e-Tac Adhesive .....            | 1 oz.  |
| Rocks.....                           | 4          | Foam Tack Glue .....                | 4 oz.  |
| 3-color Paint Strip.....             | 1          | Scenic Glue.....                    | 4 oz.  |
| Earth Undercoat .....                | 2 oz.      | Scenic Cement.....                  | 16 oz. |
| Blended Turf (Green Blend) .....     | 36 oz.     | Sprayhead.....                      | 1      |
| Fine Turf (Soil).....                | 2 oz.      | Sifter Cup .....                    | 1      |
| Fine Turf (Yellow Grass).....        | 2 oz.      | Sifter Cup Lid.....                 | 1      |
| Fine Turf (Earth) .....              | 2 oz.      | Foam Pad Applicator.....            | 1      |
| Coarse Turf (Medium Green) .....     | 18 oz.     | Stirring Sticks .....               | 2      |
| Clump-Foliage (Light Green).....     | 19 oz.     | Instructions .....                  | 1      |



## Additional Items Needed

- 1/2-inch masking tape
  - scissors
  - newspaper
  - liquid detergent
  - disposable cups
  - graduated measuring cup
  - drinking straw or eyedropper
  - pan or bowl for water
  - paintbrush
  - toothpicks or small nail
  - track (see page 6)
  - ruler or straightedge
  - spray bottle
  - hobby knife or Foam Knife (ST1433)
  - pencil or Foam Pencil (ST1431)
- HIGHLY RECOMMENDED:**
- Low Temp Foam Glue Gun (ST1445)
  - Glue Sticks (ST1446)
  - Hot Wire Foam Cutter (ST1435)
  - Foam Nails (ST1432)