



RP1 Big Deal Pawn



RP2 River Pass Volunteer Fire Dept.



RP3 Margaret's Market/ Boot Repair



RP4 Dyden #3



RP5 Main Street Apts.



RP6 River Pass Apts.



RP7 Dyden #2



RP8 Floyd's Barbershop/ Binder Book Shop



RP9 Rosie's/Antiques



RP10 Don's Hardware



WOODLAND SCENICS® S1487 RIVER PASS BUILDING KITS GENERAL INSTRUCTIONS

With 15 separate HO scale buildings and more than 200 detailed accessories, River Pass Building Kits are a great way to add structures and detail to your model railroad layout. These easy-to-assemble buildings were created for the 4x8-foot HO scale River Pass; however, they can be used on any HO scale layout. River Pass consists of three separate kits: the River Pass Layout Kit #1 (ST1484), River Pass Scenery Kit #2 (S1488) and the River Pass Building Kits #3 (S1487).

BUILDING LIST

RP1..... Big Deal Pawn	RP6..... River Pass Apts.	RP11..... Patriot Appliance
RP2..... River Pass Volunteer Fire Dept.	RP7..... Dyden #2	RP12..... River's Hotel
RP3..... Margaret's Market/ Boot Repair	RP8..... Floyd's Barber/Binder Book Shop	RP13..... Dyden #1
RP4..... Dyden #3	RP9..... Rosie's/Antiques	RP14..... Merl's Dry Goods
RP5..... Main Street Apts.	RP10..... Don's Hardware	RP15..... Dad's Museum

DETAILS LIST

Part No.	Name	Qty.	Part No.	Name	Qty.	Part No.	Name	Qty.
TRAILER	1 Bed	1	BILLBOARD	30 Billboard	1	LIGHTS	68 Yard Light on Post	1
	2 Side boards	2		31 Catwalk	1		69 Flood Lights	6
	3 End Board	1		32 Light Bar	2		70 Flood Lights/Bracket	2
	4 Axle	1		33 Outer Brace	2		71 Pole for Utility Light	1
	5 Wheels	2		34 Inner Brace	1		72 Utility Light	1
CRATES & BARRELS	6 55 Gallon Drum	9	ROOF ACCESSORIES	35 Med. Roof Vents	9		73 Street Lights	6
	7 3 Barrel Grouping	1		36 Lg. Roof Vent	1		74 Ladders	4
	8 10 Crates/1 Barrel Group	1		37 Ex. Lg. Roof Vent	1		75 Lamp Posts	2
	9 4 Crates/1 Barrel Group	1		38 Roof Hatches	8	DETAILS	76 Mail Sack	1
	10 Crates of Fruit Group	2		39 Double Chimney	1		77 Cinder Blocks	18
	11 Basket of Fruit	1		40 Septic Vents	9		78 Electric Meter Box	1
	12 Whisky Barrels W/Flowers	2		41 Chimney W/Vent	1		79 Double Electric Meter	1
	13 Empty Crates	2	AUTOMOTIVE PARTS	42 Truck Tires	4		80 Pipes	4
	14 Sm. Crates	2		43 Car Tires	6		81 Pipe Valve Handle	2
	15 Med. Crates	2		44 Wheels (12 spoke)	3		82 Wooden Kegs	3
	16 Lg. Crate	1		45 Wheels (6 spoke)	3		83 Aluminum Kegs	3
ANIMALS	17 Doghouse	1		46 Tractor Wheels	2		84 Mail Drop Box	1
	18 Dogs	3		47 Rear End Axle	1		85 Small Louver	1
	19 Cat	1		48 Radiator W/Lights	1		86 Benches	4
LAUNDRY	20 Pants	2		49 Muffler & Tail Pipe	1		87 Bench W/Books	1
	21 Shirts	2		50 Car Ramps	2		88 Lawn Mower	2
	22 Briefs	1	SIGNS	51 Sidewalk Sign	1		89 Down Spouts	4
AWNINGS	23 Large Awning	1		52 Dad's Sign Topper	1		90 Flour Sack Pile	1
	24 Small Awning	1		53 Sign Boards	7		91 Skids	12
FENCING	25 Picket Fence W/Post	2		54 Road Signs	2		92 Pop Machine	1
	26 Picket Fence Without Post	2		55 Sandwich Board	1		93 Man Sleeping	1
	27 Picket Fence Gate	1		56 Barber Post	1		94 Man Sitting	1
	28 Wooden Fence Sm.	3	TRASH/JUNK	57 Dumpster	1		95 Hand Cart	1
	29 Wooden Fence Lg.	1		58 Trash Cans	4		96 Hand Cart W/2 Crates	1
				59 Trash Can/Barrel	1		97 Water Can	1
				60 Trash Can/Crate	1		98 Washing Machine	1
				61 Trash Can Spilled	1		99 Shovels	2
				62 Trash Can W/Lid off	1		100 Tool Grouping	1
				63 Oil Drum W/Pump	1		101 Spooled Cable	3
				64 Drum W/Trash	1		102 Propane Cylinder	1
				65 Smashed Drum	1	FISHING DOCK	103 Dock Floor	1
				66 Misc. Junk	12		104 Sm. Dock Supports	2
				67 Skids W/Junk	3		105 Lg. Dock Supports	2

ADDITIONAL ITEMS INCLUDED WITH KIT Black paper - 12 (7 3/4" X 4 1/2") • Wire for Flagpole - 1 (3") • Fence Material - 3 • Fence Posts - 8 • Dry Transfer Decal sheet - 1 • Billboard signs - 6 • Signs & Flags - 30 • Window Canopies - 12 • Awnings - 2 • Plaster Dock - 1 • Plaster Steps - 1

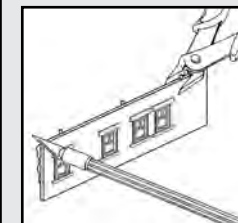
*Hydrocal is a product of US Gypsum

PLACEMENT INSTRUCTIONS

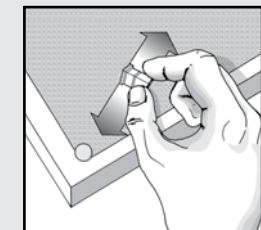
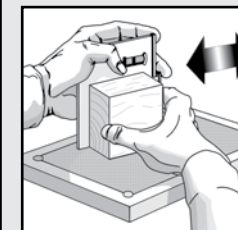
We have included a "footprint" on the back page showing the placement of the buildings used on River Pass. Since the buildings are packaged and assembled individually, you can use any arrangement you wish. Each building includes its own set of instructions. The following is a list of General Instructions for preparing, gluing and painting the individual parts and castings.

The various white metal castings and details can be placed on the layout anywhere you wish. For instance, the barrels, crates and skids can sit next to the factory or behind the buildings. Street lights and light poles should be placed in front of buildings next to a street.

PREPARATION OF PLASTIC PARTS



Use a hobby knife or diagonal cutters (i.e. Fiskars) to remove excess plastic created by molding process. Do not cut into details.



Sand draft angles (left from molding process) from edges of all the molded parts that will be glued until edges are flat. Tack 100 grit sandpaper to flat surface. Make sanding area longer than the longest wall of the model. Using squaring block, keep edges flat and hold panels square as you sand. Move wall panel, not the block. Sanding is essential to achieve proper fit later. Be careful not to sand into detail of buildings. Lightly sand or file the smooth sides and bottom of chimneys for proper fit.

To glue plastic walls and pieces use plastic model cement or solvent.

PAINTING & DETAILING PLASTIC PARTS

PAINTING

We recommend airbrushing with solvent-based enamel paints, such as Floquil. Use water-soluble flat paint, such as Polly 'S' for brushing (color is your choice). See photo on box for suggested coloring. Paint roofs in flat tones and vary colors to resemble weathering and enhance shingle detail. Color of window and door frames can match or contrast with building. Building may be aged with chalks, or lightly misted by airbrushing with thinned flat black paint such as Floquil "Grimy Black." Small details painted in contrasting colors will enhance the building's appearance. Scrape paint from glue points as necessary. Walls and other parts may be painted before assembling. If buildings are painted after assembly, be careful not to paint over the clear window material.

DRY TRANSFER DECAL INSTRUCTIONS

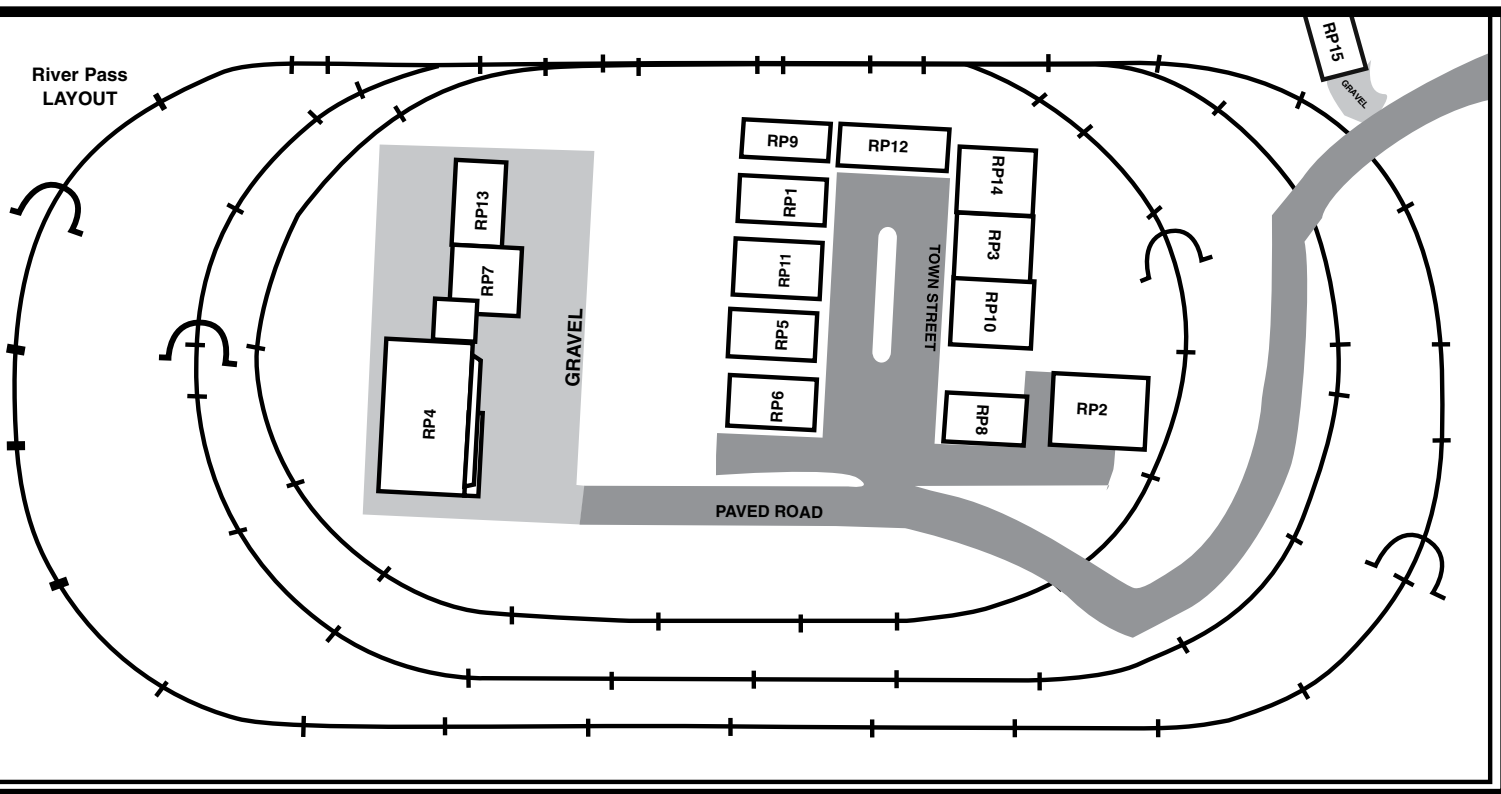
A. Place Dry Transfer Decals on proper building as indicated on decal sheet, i.e. RP1, RP2, RP3, etc.

B. Place sheet with decal pressed against surface. Hold sheet firmly so decal will not move while applying. Rub top of sheet over desired decal with a burnisher or dull pencil.

C. Carefully remove decal sheet. If transfer was incomplete, let sheet fall back into place and repeat procedure.

D. Place backing paper over decal and reburnish to set the decal in place.

TIP: If decals are fragmented, they can still be used. This effect adds a realistic, weathered look.



RP11 Patriot Appliance



RP12 River's Hotel



RP13 Dyden #1



RP14 Merl's Dry Goods



RP15 Dad's Museum

NOTE: In striving for authenticity in our Dry Transfer Decals, some detail has been lost in the process of reducing life-sized signs for reproduction in HO scale. This is not a misprint, rather an effect of the reduction. See the entire line of Woodland Scenics Dry Transfers and castings at your favorite hobby shop.

Plastic-backed Signs

It is best to back the following signs with the scrap styrene plastic left over from making the roofs of your buildings:

- road and traffic signs
- Groceries
- railroad crossings
- Ice
- firehouse shield
- Home on the Range
- River's Hotel
- Modern Electric
- Dyden #3
- Cookery
- Margaret's
- Showroom
- Clabber Girl
- Dry Goods House

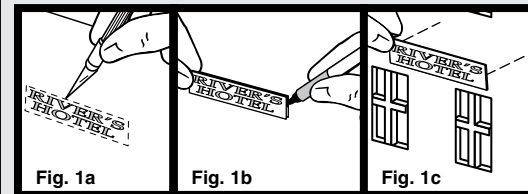
3-dimensional effect for the sign decals

A. Apply appropriate Dry Transfer Decals and paper signs (suggested list above) to surface of scrap styrene plastic, left over from roofs.

B. Using a hobby knife, carefully cut out plastic-backed signs as close to the edges as possible (Fig. 1a).

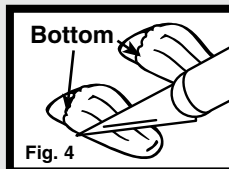
C. Blacken white edges of plastic backing with a black marker (Fig. 1b).

D. Glue sign to desired building (Fig. 1c).

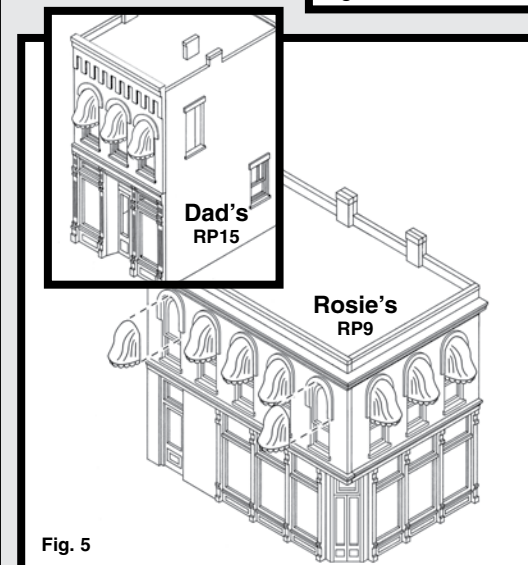


CANOPY INSTRUCTIONS

Paint canopies the color of your choice and let them dry. Cut carefully around canopies using a sharp hobby knife. Remove bottoms of canopies (Fig. 4). Sand, trim and test fit canopies. Touch up bottom of canopies before attaching.



Glue parts to Rosie's and Dad's (Fig. 5).



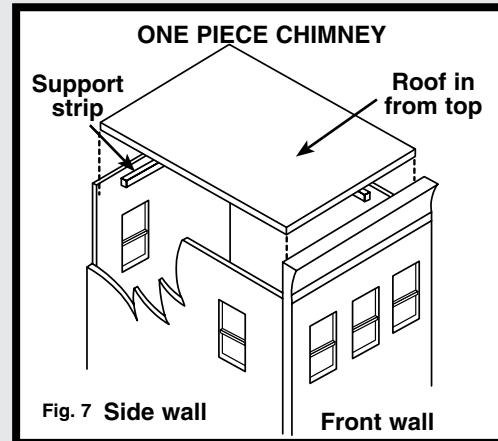
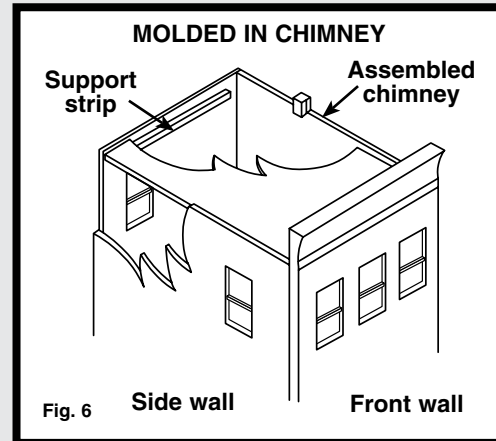
ROOF INSTRUCTIONS

Dyden #1 (RP13) building has special directions for roof installation. NOTE: To assemble gable roof, see #201 Roof Assembly Instructions (enclosed in Dyden #1 individual building package). The illustration of the roof assembly 201-4 wall and 201-2 wall are opposite of building assembly illustration.

For the rest of the kits, proceed as follows. Measure inside dimensions of roof opening(s). Draw measurements on cardboard, then cut out and test fit cardboard. Make changes in cardboard roof as required until it fits well. Trace cardboard roof on styrene roof sheet and cut out by scoring with hobby knife along straightedge and snapping off excess plastic. Test fit and make adjustments with hobby knife. (Save scrap roof material for signs.) Paint roof a flat black such as Floquil "Grimy Black." Glue in place according to type of chimney your kit has (see below).

Molded In Chimney (RP1, RP2, RP7, RP8, RP9, RP14, RP15)

If your building has chimney(s) molded in as part of wall, insert roof from bottom of building and glue to bottom of chimney(s). Kits include square .080 x .080 inch styrene plastic strips to make roof supports (Fig. 6). Cut strips for supports. For small buildings (RP1, RP7, and RP15), roof support strips on two opposite walls will do. For large buildings (RP2, RP8, RP9, and RP14), you will need to put a support strip on every wall. Place each strip under roof so it fits flush to underside of roof and to inside of wall where roof and wall meet. Glue to both the underside of roof and to wall.

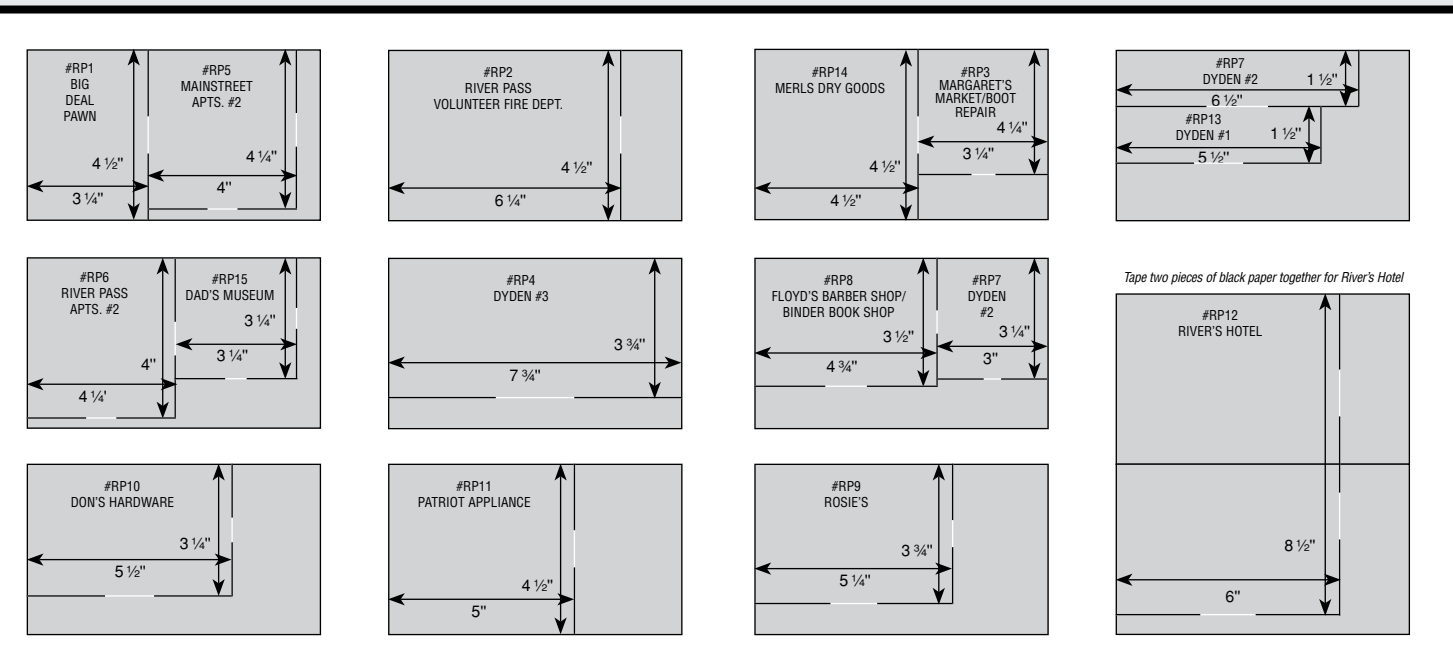


One Piece Chimney Or No Chimney (RP3, RP4, RP5, RP6, RP10, RP11 and RP12)

If your building has separate chimneys, glue square .080 x .080 inch styrene plastic roof support strips to backs of walls prior to installing roof. Cut roof support strips to lengths that are shorter than lengths of walls (Fig. 7). If the walls in your kit are different heights, be sure strips are glued so that roof will be below top of lowest wall. As a general rule you will glue strip about 1/8" down from top of lowest wall (usually the back wall) and about 1/4" down from top of mid-height walls (usually side walls). Glue strips on front wall so they are even with strips on other walls. The distance down from the top that you glue roof supports is not critical. Some roofs are level and some will slope front to back. Be sure they are placed even with each other so roof will lie reasonably flat. Glue roof to top of roof support strips. Glue chimney to top of roof.

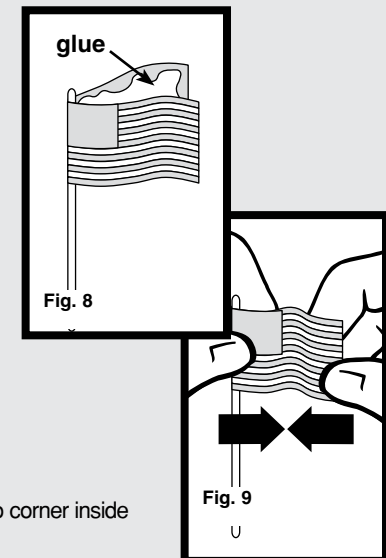
OPTIONAL IDEA

To complete the illusion that the building is occupied, place black paper (included in this kit) diagonally from corner to corner inside building to block light from entering (see cutting diagram below).



ASSEMBLE FLAG

Carefully cut out the flag of your choice with a sharp hobby knife. Fold in half and coat joining faces with white glue. Wrap around the 3" wire provided (Fig. 8). Hold each end of flag (Fig. 9) and push toward the center to make a "waving flag."



GENERAL INSTRUCTIONS FOR WHITE METAL CASTINGS

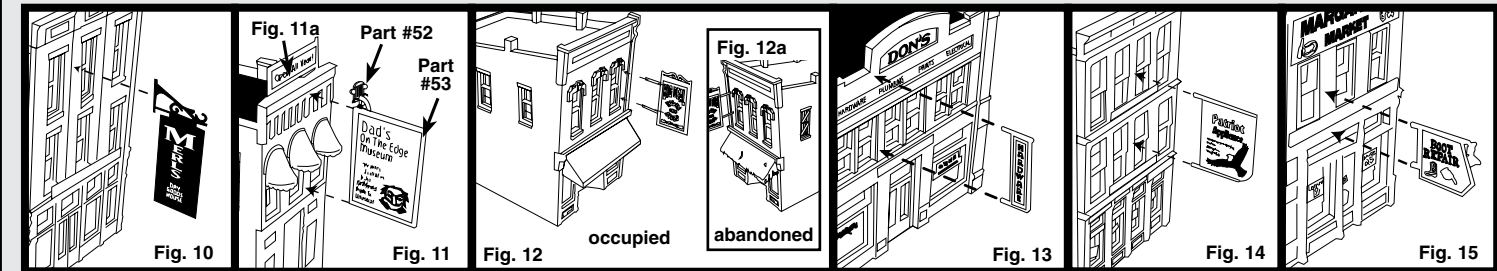
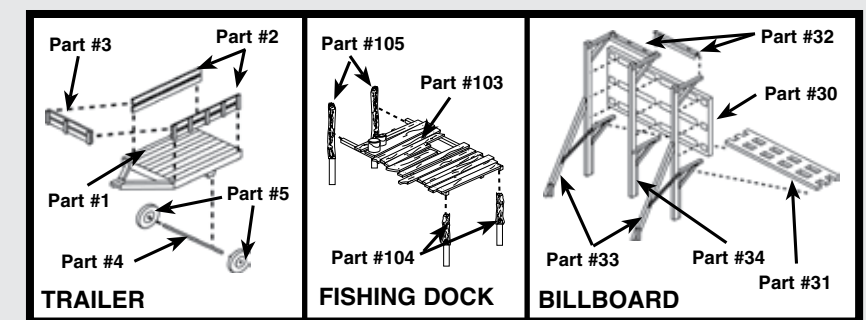
The River Pass Building Kits contains more than 200 white metal castings. These details add life to your layout and make it more than a set of buildings. They are easy to assemble, paint and place. Follow these instructions for preparing the castings. Refer to box photos for some general placement ideas.

PREPARATION OF METAL CASTINGS

Remove parting lines, flash and stems with a hobby knife (i.e., X-Acto), diagonal cutters (i.e., Fiskars), sandpaper or file. Test fit castings. Note: Castings bend easily and should be handled carefully. Straighten bent or warped castings. Wash all metal castings in soapy water to remove residue caused by molding process. Rinse and allow parts to dry. Plan ahead. It is often easier to paint certain castings before assembly. We recommend using a primer coat and then painting castings with a high quality, flat paint. If you paint first, scrape paint from glue points before gluing. Touch up paint, if necessary, after assembly. Glue castings together with a fast-setting epoxy or cyanoacrylate, such as "Super Glue" (a thick, gap-filling cyanoacrylate is recommended).

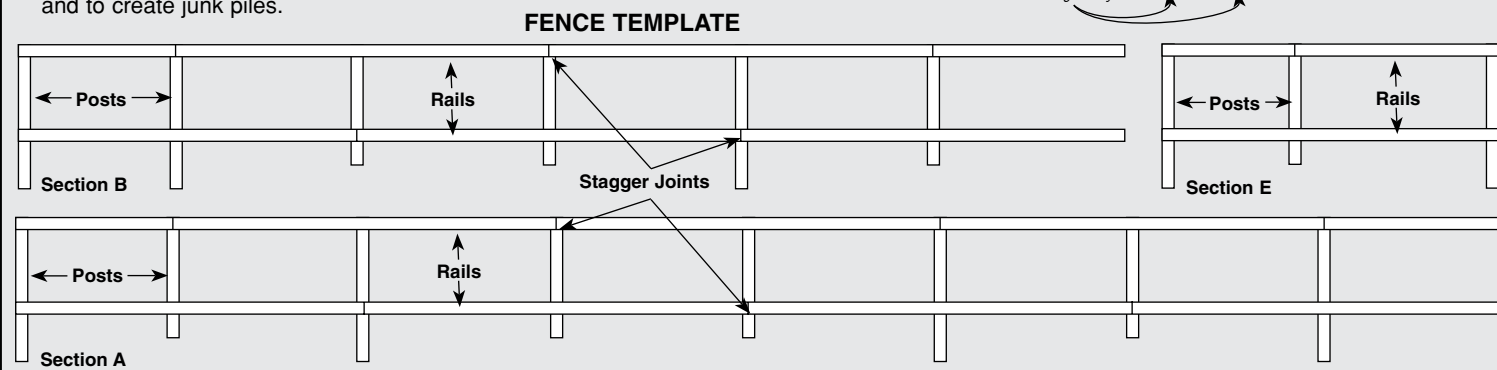
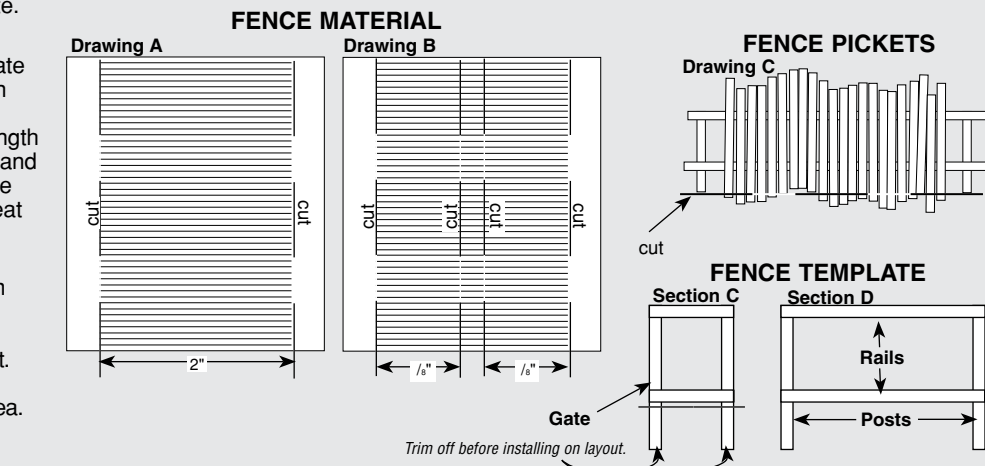
SIGN INSTALLATION

Six of the buildings have large signs. Using sign frame as a guide, trace frame on to printed paper signs. Cut and trim sign to fit sign frame. Glue cut signs to the metal sign castings, using any white glue. Merl's Dry Goods (Fig. 10) and Dad's Museum signs (Fig. 11) are glued to the building as shown in the illustration, with cyanoacrylate. Big Deal Pawn (Fig. 12), Don's Hardware (Fig. 13), Patriot Appliance (Fig. 14) and Boot Repair (Fig. 15) will need to have holes drilled into the side of the building before gluing the signs to the building with cyanoacrylate. Refer to illustrations for placement of the signs. Dad's Museum has a two-piece hanging sign (part #52 and #53). Glue #52 to the top of #53 and attach to the building (Fig. 11). There are three signs exactly the same. Trim one of the sign's posts and glue to the top of the roof (Fig. 11a). The other two can be used as road signs.



FENCE CONSTRUCTION (read entire instruction before beginning)

- With light strokes, trim one 1/32" thick fence material to two inches wide, using a straightedge and X-Acto knife (Drawing A). The strips should fall apart. If not, roll between fingers to separate.
- Tape fence template plan to a flat surface.
- Carefully align strips of fence rail on one template (stagger joints as indicated). Tape in position on template. Don't cover posts on template. Using 3/64" thick fence material strips, cut posts to length indicated on template. Align posts as indicated and using a fast setting epoxy or cyanoacrylate, glue railings at railing joints (allow glue to dry). Repeat for other four fence sections.
- Cut two remaining 1/32" fence material into 7/8" pickets (Drawing B). Carefully remove fences from templates, turn over, and randomly glue pickets. When dry, trim bottom of pickets (Drawing C). Refer to box photo for suggested fence placement. Building placement and available space will determine the length of fence. Adjust to fit your area.
- Save scrap to board up windows on buildings and to create junk piles.



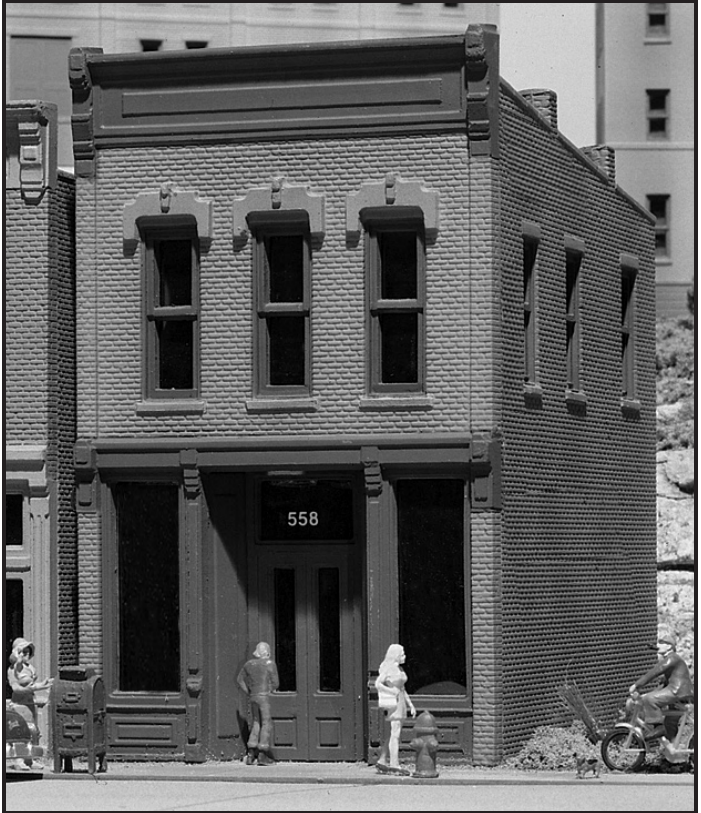
Big Deal Pawn

We have supplied a good awning and a torn awning, so that you may decide whether to make Big Deal Pawn look occupied, or give it an abandoned look. If you like the abandoned look, use the scrap from the wooden fence to create a boarded up look. Glue the boards onto the front door and a few of the windows (Fig. 12a). We also supplied newspaper print to glue to the inside of the front windows to add to the abandoned look.



**WOODLAND
SCENICS®**

HO SCALE STRUCTURE KIT



VEHICLES AND FIGURES NOT INCLUDED

MADE IN USA

©2002 OCO

Scale Model Material

WOODLAND SCENICS
P.O. BOX 98, LINN CREEK, MO 65052
www.woodlandscenics.com

#RP1
BIG DEAL PAWN
2 3/4" W x 4" D x 4 7/8" H



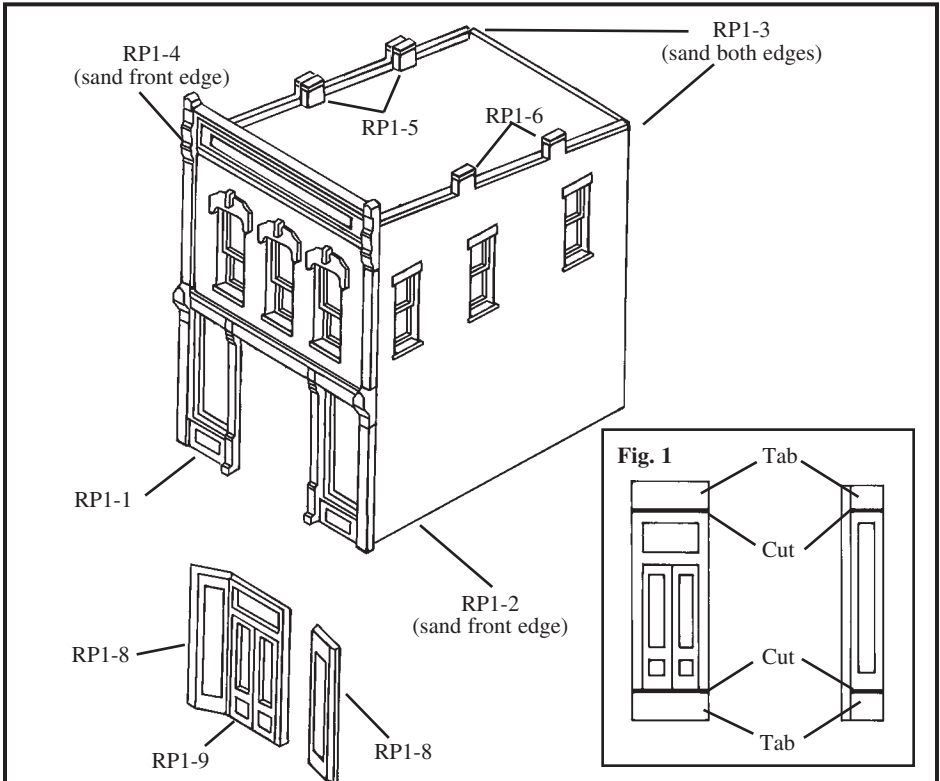
Please follow the River Pass General Instructions which are enclosed in this kit. You will be referred to the drawings and notes printed here. Please read through all instructions before beginning to build your kit.

Chimneys

Lightly sand bottom edge of chimney backs (RP1-5 and RP1-6) flat. Sand or file the smooth sides of chimney backs and molded-in chimney fronts so back and front fit tight and flush with each other. Glue together. When glue is dry, sand tops of chimneys flat.

Entry Doors

"Tabs" (necessary for molding purposes) must be removed from tops and bottoms of entry door (RP1-9) and entry side panels (RP1-8) by cutting in the indentations with a hobby knife. Be careful, when cutting so you do not damage the door frames (Fig. 1). Note that both entry side panels have a shallow angle on one edge and a deeper angle on the other edge. Glue shallow angled edges to entry door. While glue is still flexible on the resulting "entry assembly," glue deep-angled edges to back of columns by opening on front wall (RP1-1) (Exploded View Drawing).





**WOODLAND
SCENICS®**

HO SCALE STRUCTURE KIT



VEHICLES AND FIGURES NOT INCLUDED

MADE IN USA

©2002 OCO

#RP2 RIVER PASS VOLUNTEER FIRE DEPARTMENT

4 3/4" W x 5" D x 5" H

Scale Model Material

WOODLAND SCENICS
P.O. BOX 98, LINN CREEK, MO 65052
www.woodlandscenics.com



**WOODLAND
SCENICS®**

#RP2

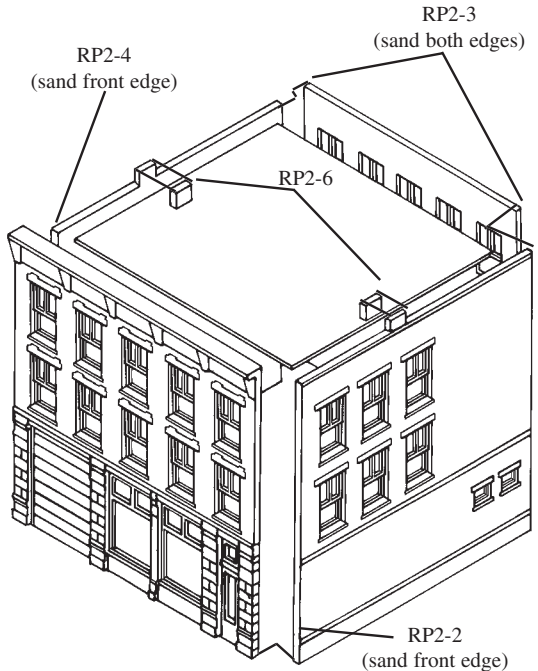
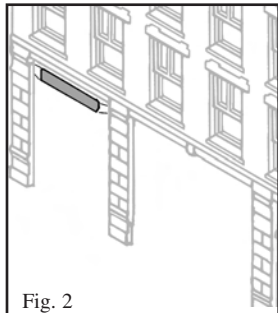
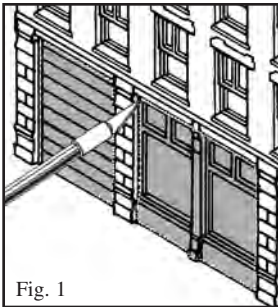
River Pass Volunteer Fire Department

Please follow the River Pass General Instructions which are enclosed in this kit. You will be referred to the drawings and notes printed here. Please read through all instructions before beginning to build your kit.

The firehouse can be modified to create two open doors. Prior to assembly and painting, using a hobby knife, gently score along the outside edges of the roll-up door and the two windows where indicated. (Fig. 1) Don't force the knife. Continue scoring until you have cut through the plastic. If necessary, clean the edges of the openings with a file or sandpaper. To create the look of a partially open door on the left opening, cut one or two sections from the bottom of the door that was removed earlier. After painting, glue this piece on the upper inside of the door opening and leave about 1/8" or so exposed (Fig. 2).

Chimneys

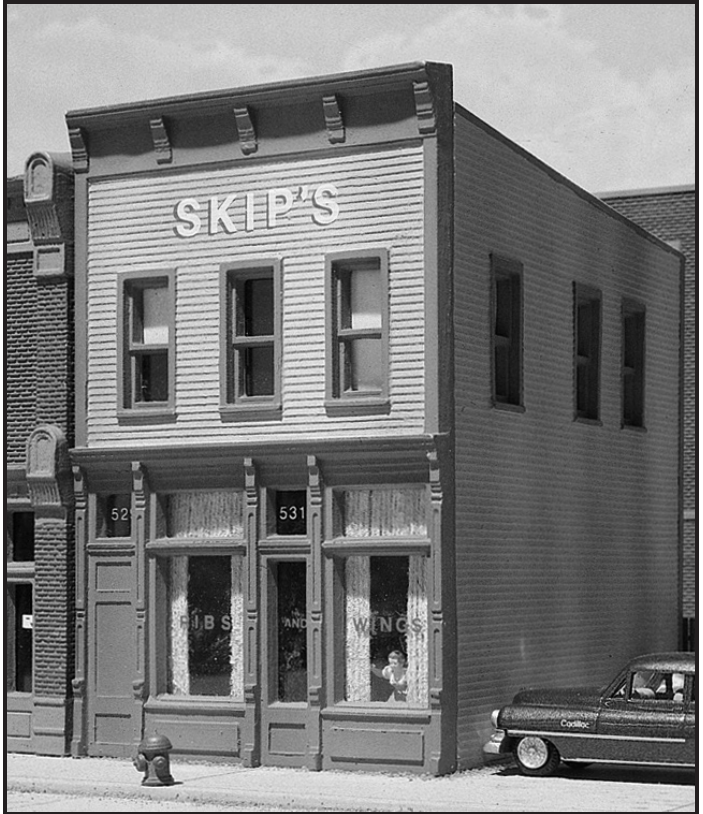
Lightly sand bottom edge of chimney backs (RP2-6) until flat. Sand or file the smooth sides of chimney backs and molded-in chimney fronts so back and front fit tight and flush with each other. Glue together. When glue is dry, sand tops of chimneys flat.





**WOODLAND
SCENICS®**

**HO SCALE
STRUCTURE KIT**



VEHICLES AND FIGURES NOT INCLUDED

MADE IN USA

©2002 OCO

Scale Model Material

WOODLAND SCENICS
P.O. BOX 98, LINN CREEK, MO 65052
www.woodlandscenics.com

#RP3
**MARGARET'S MARKET/
BOOT REPAIR**
2 3/4" W x 4" D x 4 3/8" H



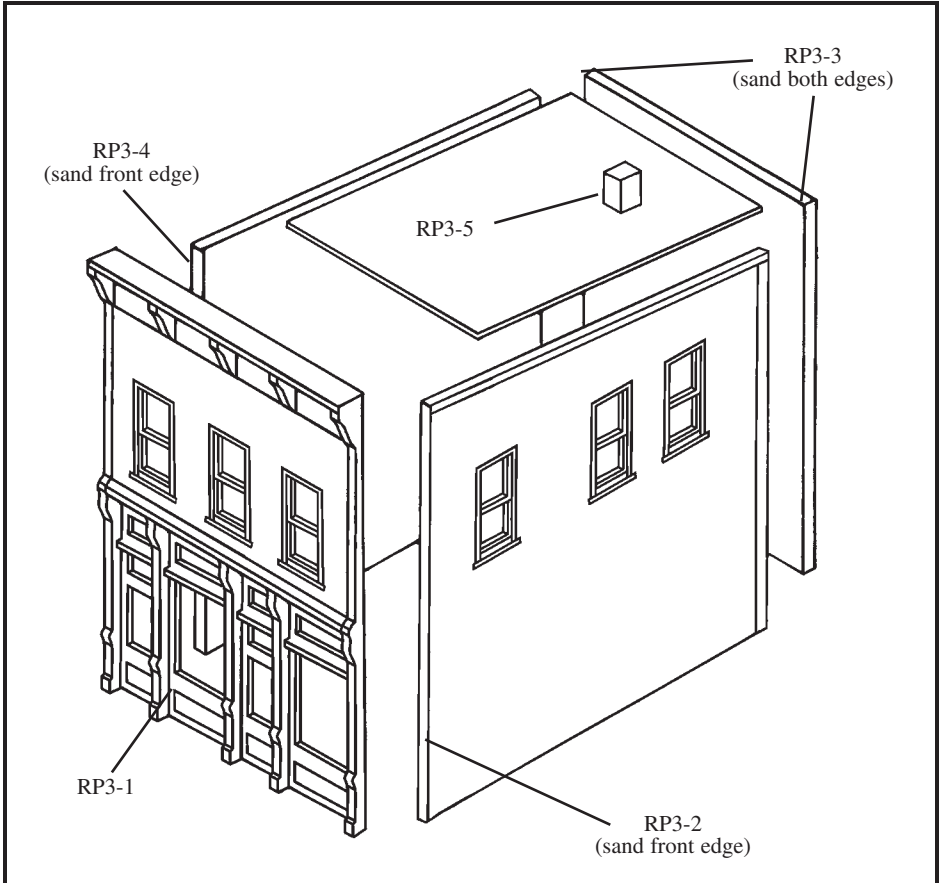
**WOODLAND
SCENICS®**

#RP3 Margaret's Market/ Boot Repair

Please follow the River Pass General Instructions which are enclosed in this kit. You will be referred to the drawings and notes printed here. Please read through all instructions before beginning to build your kit.

Chimney

Lightly sand bottom of chimney (RP3-5) and glue to roof after roof installation.





**WOODLAND
SCENICS®**

HO SCALE STRUCTURE KIT



MADE IN USA

©2002 OCO

Scale Model Material

WOODLAND SCENICS
P.O. BOX 98, LINN CREEK, MO 65052
www.woodlandscenics.com

#RP4
DYDEN #3
6 3/4" W x 3 1/4" D x 4 1/4" H



**WOODLAND
SCENICS®**

**#RP4
Dyden #3**

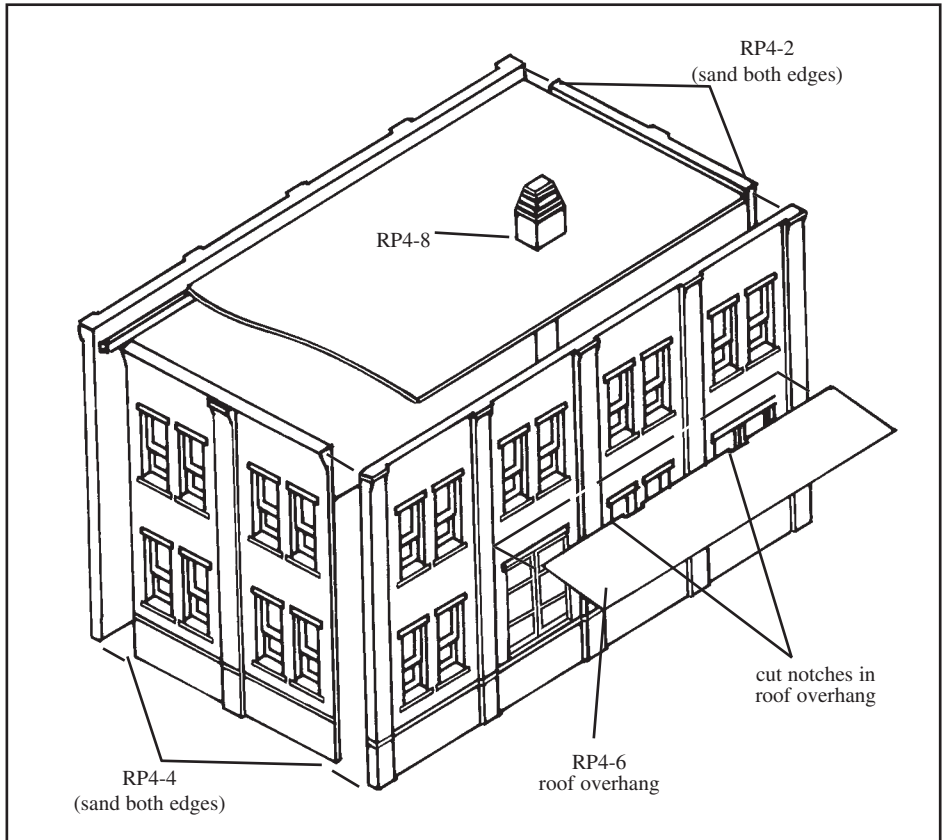
Please follow the River Pass General Instructions which are enclosed in this kit. You will be referred to the drawings and notes printed here. Please read through all instructions before beginning to build your kit.

Chimneys

Lightly sand bottom of chimney (RP4-8) and glue to roof after roof installation.

Roof Overhang (optional)

Cut styrene roof material to about 4 1/4" x 1" for roof overhang (RP4-6). Cut or file two notches to clear pilasters. Trim length to fit between pilasters as shown. Glue to wall above dock level loading doors. Place it with a slight downward pitch and high enough for vehicles and rolling stock to clear.





**WOODLAND
SCENICS®**

HO SCALE STRUCTURE KIT



FIGURES NOT INCLUDED

MADE IN USA

©2002 OCO

#RP5 MAIN STREET APARTMENTS

2 1/2" W x 4 1/4" D x 4 7/8" H

Scale Model Material

WOODLAND SCENICS
P.O. BOX 98, LINN CREEK, MO 65052
www.woodlandscenics.com



**WOODLAND
SCENICS®**

#RP5

Main Street Apartments

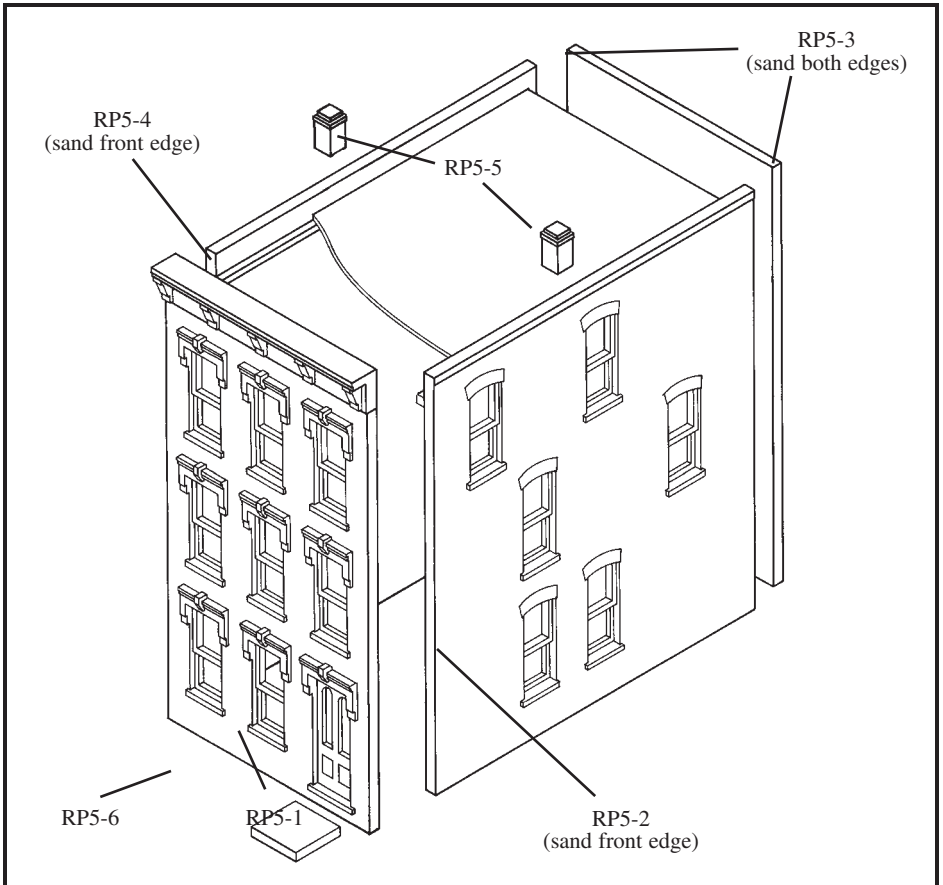
Please follow the River Pass General Instructions which are enclosed in this kit. You will be referred to the drawings and notes printed here. Please read through all instructions before beginning to build your kit.

Chimneys

Lightly sand bottom of chimneys (RP5-5) flat and glue to top edge of side walls.

Stoop

Glue stoop (RP5-6) in place.





**WOODLAND
SCENICS®**

HO SCALE STRUCTURE KIT



FIGURES NOT INCLUDED

MADE IN USA

©2002 OCO

Scale Model Material

WOODLAND SCENICS
P.O. BOX 98, LINN CREEK, MO 65052
www.woodlandscenics.com

#RP6 RIVER PASS APARTMENTS

2 1/2" W x 4 1/4" D x 4 7/8" H



**WOODLAND
SCENICS®**

#RP6

River Pass Apartments

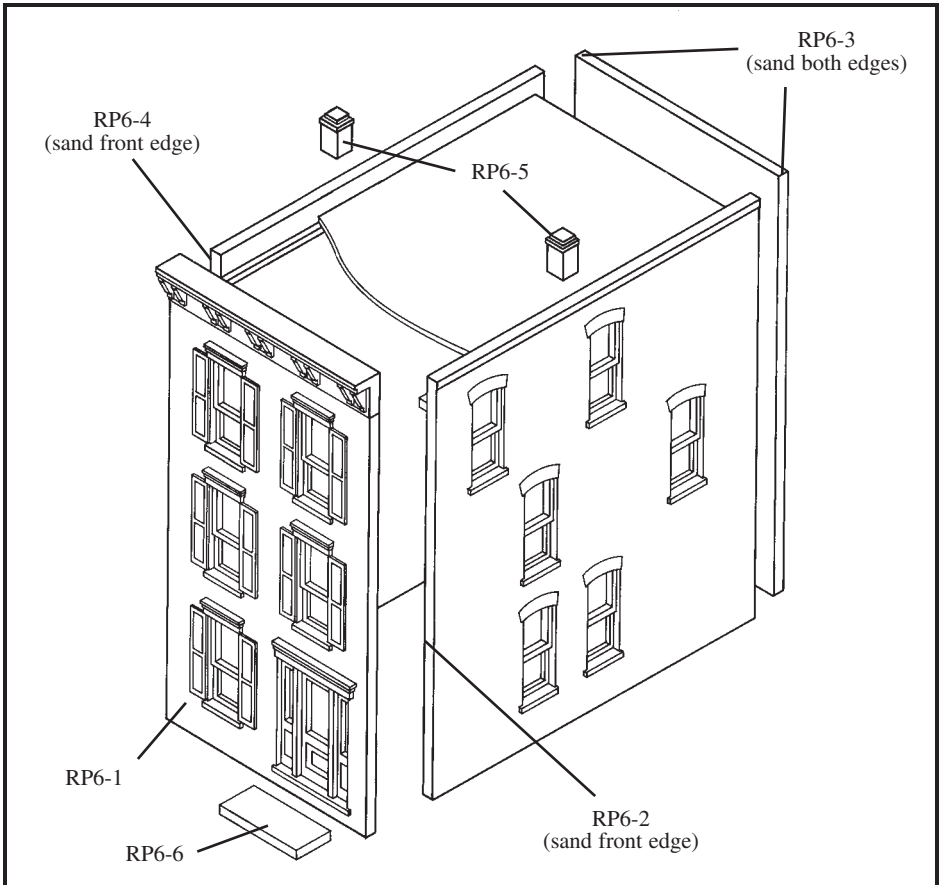
Please follow the River Pass General Instructions which are enclosed in this kit. You will be referred to the drawings and notes printed here. Please read through all instructions before beginning to build your kit.

Chimneys

Lightly sand bottom of chimneys (RP6-5) flat and glue to top edge of side walls.

Stoop

Glue stoop (RP6-6) in place.





**WOODLAND
SCENICS®**

HO SCALE STRUCTURE KIT



MADE IN USA

©2002 OCO

Scale Model Material
WOODLAND SCENICS
P.O. BOX 98, LINN CREEK, MO 65052
www.woodlandscenics.com

#RP7
DYDEN #2
6 1/4" W x 5 3/4" D x 3 1/2" H



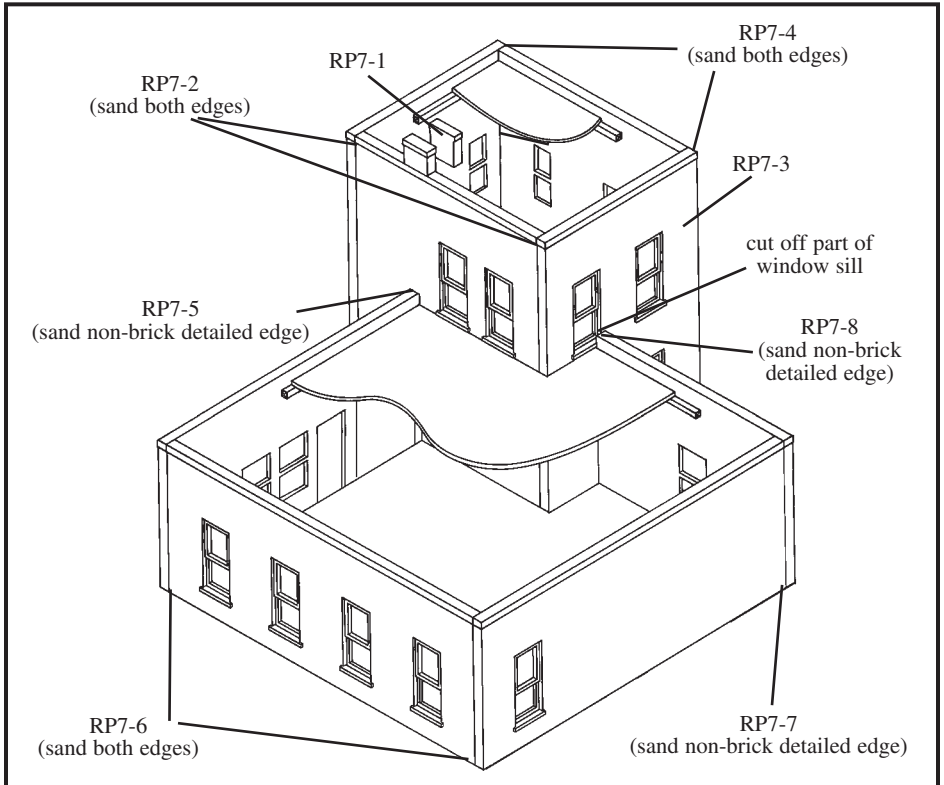
Please follow the River Pass General Instructions which are enclosed in this kit. You will be referred to the drawings and notes printed here. Please read through all instructions before beginning to build your kit.

Chimney

Lightly sand bottom edge of chimney back until flat (RP7-1). Sand or file the smooth side of chimney back and molded-in chimney front so back and front fit tightly and are flush with each other. Glue together. When glue is dry, sand top of chimney flat.

Walls

Glue the four two-story walls together. Glue the four one-story walls together. Note that wall RP7-8 touches the sill on wall RP7-3. Cut off part of the sill so wall RP7-8 will fit flush to wall RP7-3. Sand it smooth. Glue the two assemblies together as shown.





**WOODLAND
SCENICS®**

HO SCALE STRUCTURE KIT



VEHICLES AND FIGURES NOT INCLUDED

MADE IN USA

©2002 OCO

Scale Model Material
WOODLAND SCENICS
P.O. BOX 98, LINN CREEK, MO 65052
www.woodlandscenics.com

#RP8
**FLOYD'S BARBER SHOP/
BINDER BOOK SHOP**
4 1/4" W x 2 3/4" D x 4 1/8" H



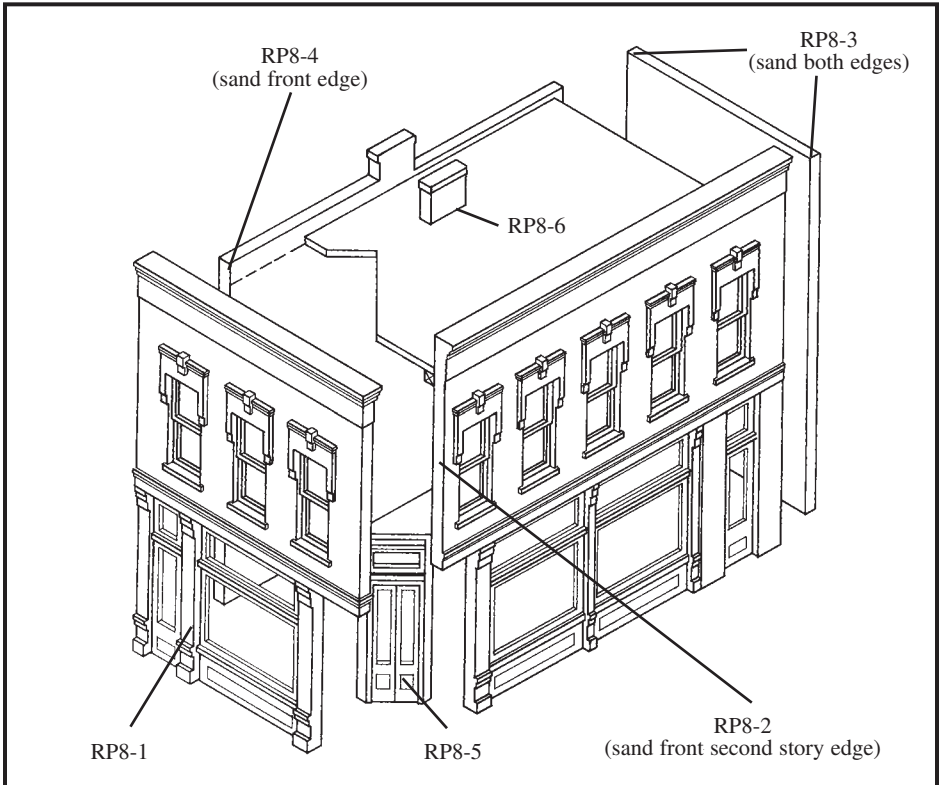
**WOODLAND
SCENICS®**

#RP8 Floyd's Barber Shop/ Binder Book Shop

Please follow the River Pass General Instructions which are enclosed in this kit. You will be referred to the drawings and notes printed here. Please read through all instructions before beginning to build your kit.

Chimney

Lightly sand bottom edge of chimney back (RP8-6) flat. Sand or file the smooth side of chimney back and molded-in chimney front so back and front fit tight and flush with each other. Glue together. When glue is dry, sand top of chimney flat.





**WOODLAND
SCENICS®**

HO SCALE STRUCTURE KIT



FIGURES NOT INCLUDED

MADE IN USA

©2002 OCO

Scale Model Material

WOODLAND SCENICS
P.O. BOX 98, LINN CREEK, MO 65052
www.woodlandscenics.com

#RP9
ROSIE'S

4 3/4" W x 3" D x 4 1/4" H



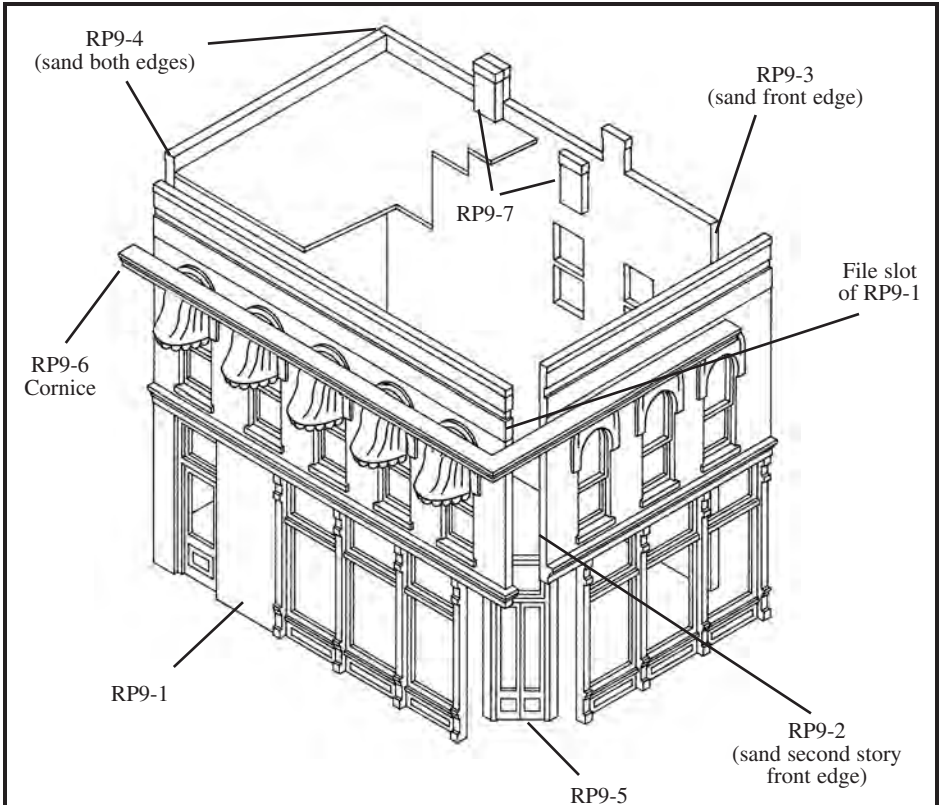
Please follow the River Pass General Instructions. You may be referred to the drawings and notes printed here. Please read through all instructions before beginning to build your kit.

Chimneys

Lightly sand bottom edge of chimney backs until flat (RP9-7). Sand or file the smooth sides of chimney backs and molded-in chimney fronts so back and front fit tightly and are flush with each other. Glue together. When glue is dry, sand tops of chimneys flat.

Cornice

The cornice (RP9-6) fits into the slots located near the tops of walls RP9-1 and RP9-2. For the cornice to fit properly, the right edge of slot on RP9-1 will have to be filed to match the left edge of slot on RP9-2. Test fit to make sure brick courses line up and that the cornice fits properly. When satisfied with fit, glue walls together. Insert cornice and glue. To attach awnings, refer to the General Instructions.





**WOODLAND
SCENICS®**

HO SCALE STRUCTURE KIT



FIGURES NOT INCLUDED

MADE IN USA

©2002 OCO

#RP10
DON'S HARDWARE
4 3/4" W x 2 3/4" D x 4 1/2" H

Scale Model Material

WOODLAND SCENICS
P.O. BOX 98, LINN CREEK, MO 65052
www.woodlandscenics.com



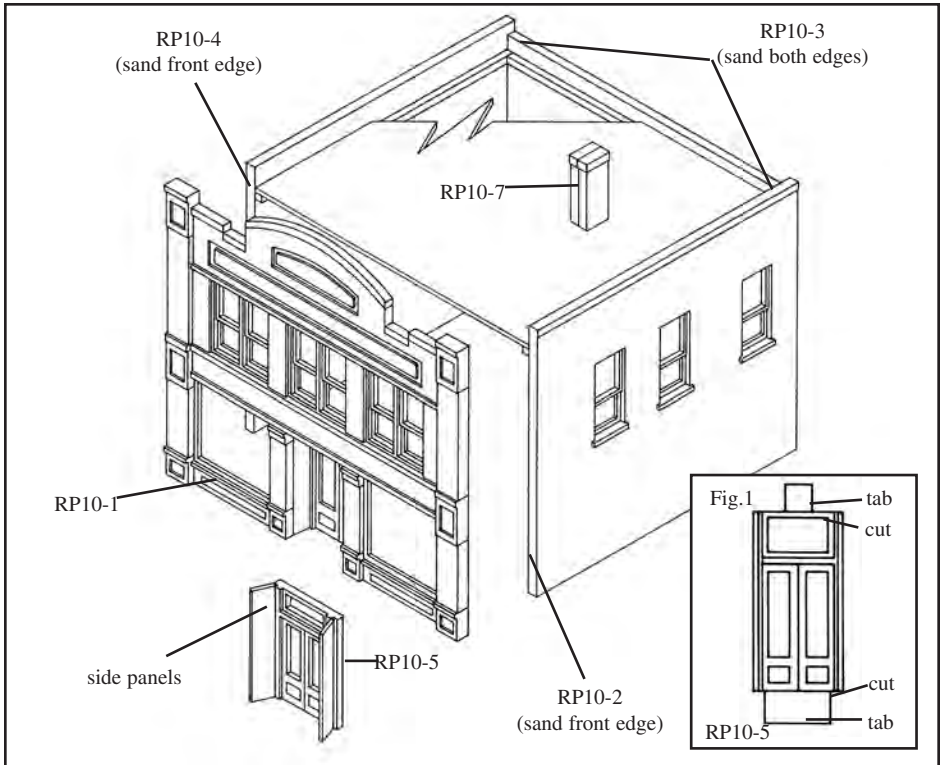
Please follow the River Pass General Instructions. You may be referred to the drawings and notes printed here. Please read through all instructions before beginning to build your kit.

Chimneys

Sand the smooth sides of chimney halves (RP10-7) so they fit flush with each other; glue together. When completely dry, file or sand to and bottom, keeping edges flat and square so no rounding occurs. Glue chimney to the top of roof after installation of roof.

Entry Doors

To remove "tabs" (necessary for molding purposes) from tops and bottoms of entry door (RP10-5), lightly cut in the indentations by making several passes with a hobby knife (X-Acto). Be careful to not damage the door frames (Fig. 1). Thin plastic strips are provided to make side panels for the entry door. To make these panels, cut the plastic strips the height of the door, scoring with a hobby knife and snapping them off. Glue the panels to the entry door at a slight outward angle so they glue behind the columns at the opening on the wall. Check for fit while the glue is still flexible. Glue the entry assembly in place.





**WOODLAND
SCENICS®**

HO SCALE STRUCTURE KIT



VEHICLES AND FIGURES NOT INCLUDED

MADE IN USA

©2002 OCO

Scale Model Material

WOODLAND SCENICS
P.O. BOX 98, LINN CREEK, MO 65052
www.woodlandscenics.com

#RP11
PATRIOT APPLIANCE

3" W x 4 1/2" D x 5 1/2" H



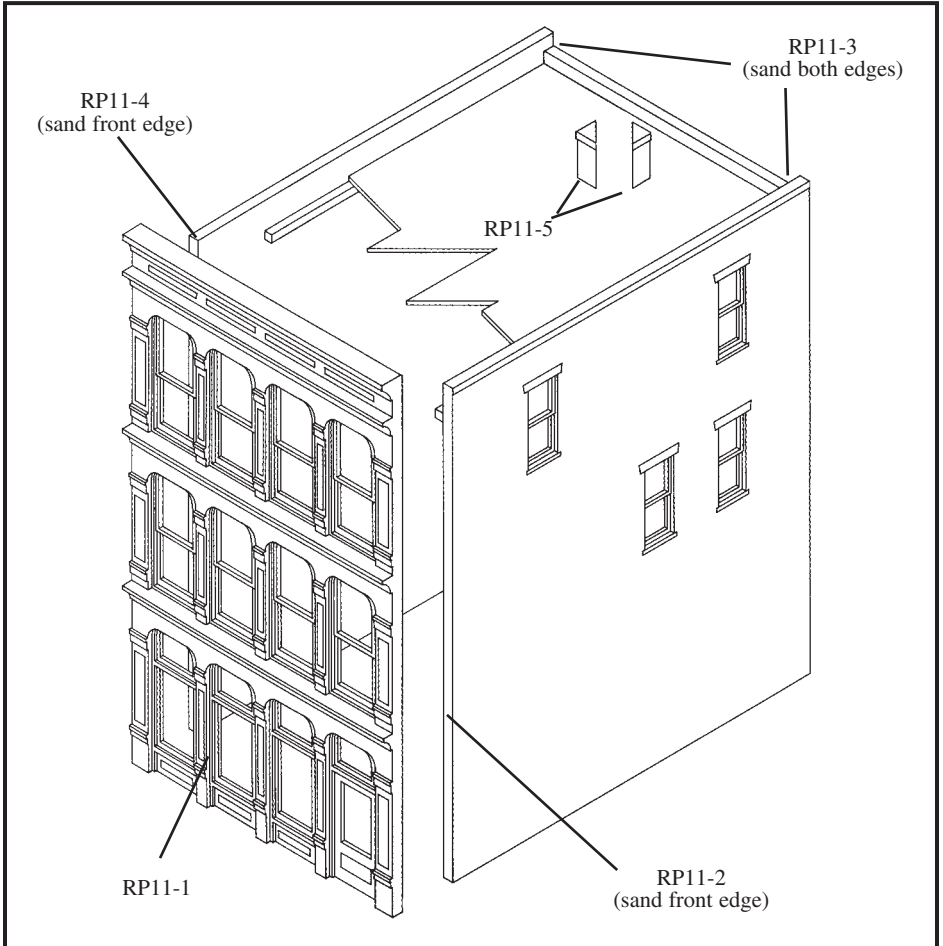
**WOODLAND
SCENICS®**

#RP11 Patriot Appliance

Please follow the River Pass General Instructions which are enclosed in this kit. You will be referred to the drawings and notes printed here. Please read through all instructions before beginning to build your kit.

Chimney

Sand the smooth sides of chimney halves (RP11-5) so they fit flush with each other; glue together. When completely dry, file top and bottom, then square structure. Glue chimney to top of roof after roof installation.





**WOODLAND
SCENICS®**

**HO SCALE
STRUCTURE KIT**



VEHICLES NOT INCLUDED

MADE IN USA

©2000 OCO

Scale Model Material
WOODLAND SCENICS
P.O. BOX 98, LINN CREEK, MO 65052
www.woodlandscenics.com

**#RP12
RIVER'S HOTEL**

7 3/4" W x 2 3/4" D x 6" H



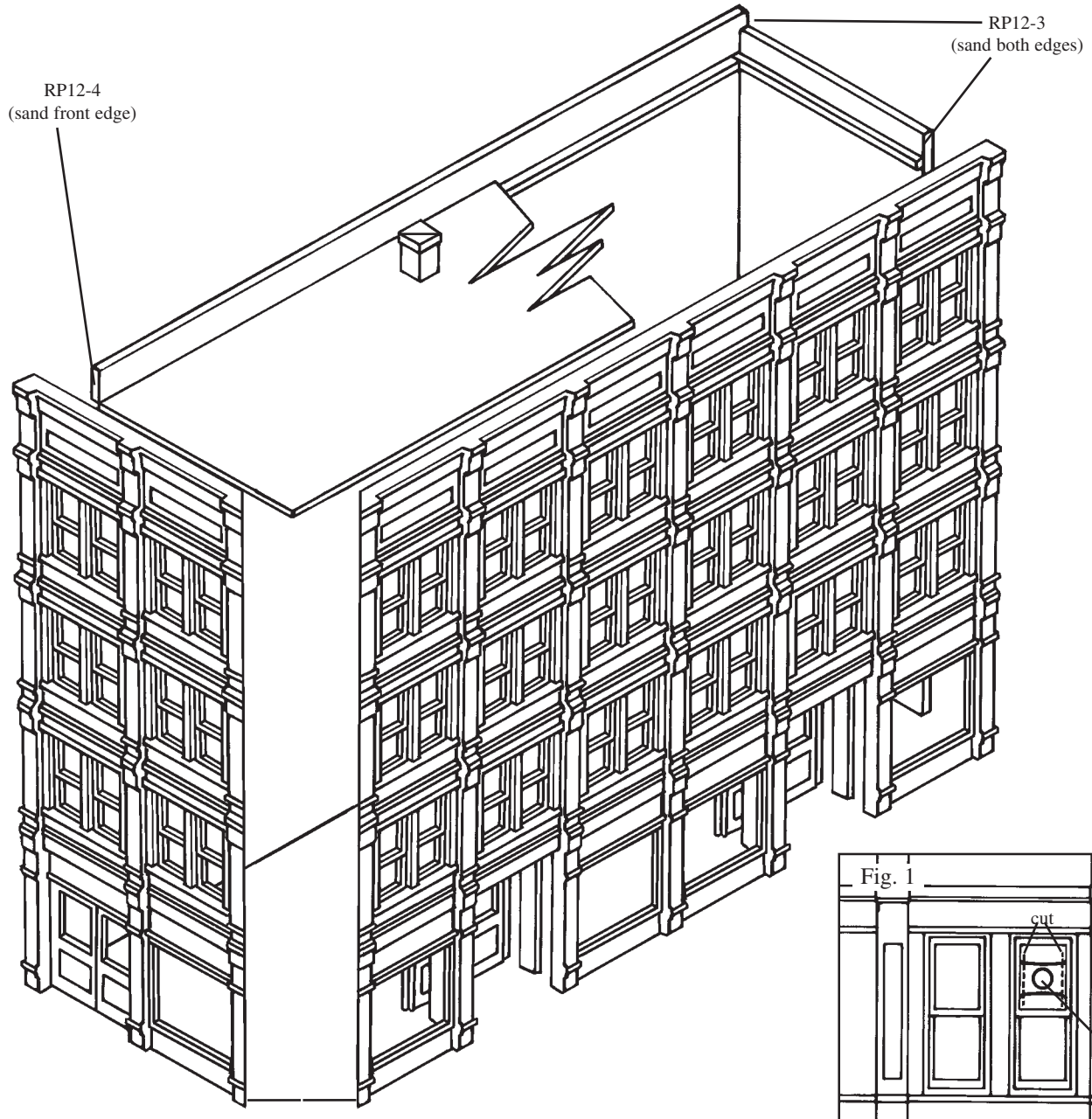
Please follow the River Pass General Instructions which are enclosed in this kit. You will be referred to the drawings and notes printed here. Please read through all instructions before beginning to build your kit.

Chimney

Glue chimney halves together. When glue is dry, sand or file bottom of chimney flat and square. Glue to top of roof after roof installation.

Window Sprues

To remove window sprues, we recommend using Fiskars Diagonal Cutters. If not available, use hobby knife with chisel blade. Lay part on flat surface, face up. Set hobby knife with chisel blade on side of sprue. Use small hammer to tap hobby knife and cut through each side of sprue from front only. Be careful not to cut window sash. Clean sides with file (Fig. 1).





**WOODLAND
SCENICS®**

HO SCALE STRUCTURE KIT



FIGURES NOT INCLUDED

MADE IN USA

©2002 OCO

Scale Model Material
WOODLAND SCENICS
P.O. BOX 98, LINN CREEK, MO 65052
www.woodlandscenics.com

#RP13
DYDEN #1
3" W x 4 3/4" D x 2 3/4" H



**WOODLAND
SCENICS®**

**#RP13
Dyden #1**

Please follow the River Pass General Instructions which are enclosed in this kit. You will be referred to the drawings and notes printed here. Please read through all instructions before beginning to build your kit.

Chimney

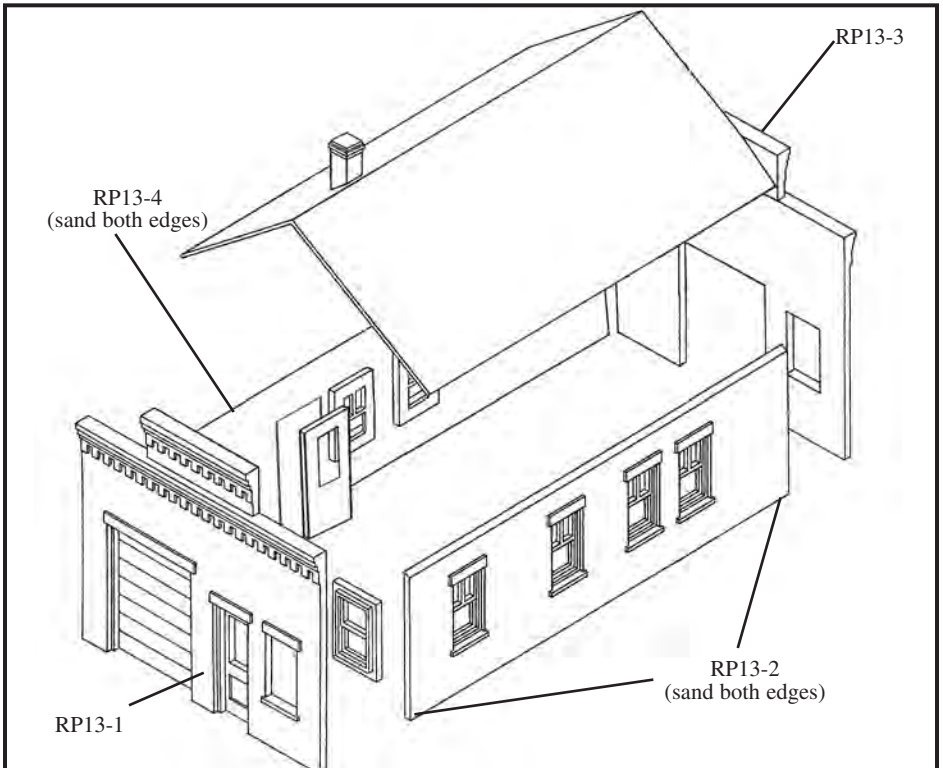
Lightly sand bottom of chimney, retaining angle so that chimney sits straight when glued to roof. Glue to roof after roof installation.

Doors and Windows

Remove doors and windows from sprue. Paint them as desired (following General Instructions). Cut clear window material to cover backs of window frames. Glue to window frames taking care that glue does not squeeze onto clear material where visible. "Flash" occurring inside of openings may have to be removed by scraping lightly with a hobby knife (X-Acto) to ensure a proper fit. Glue door and window assemblies in place.

Roof

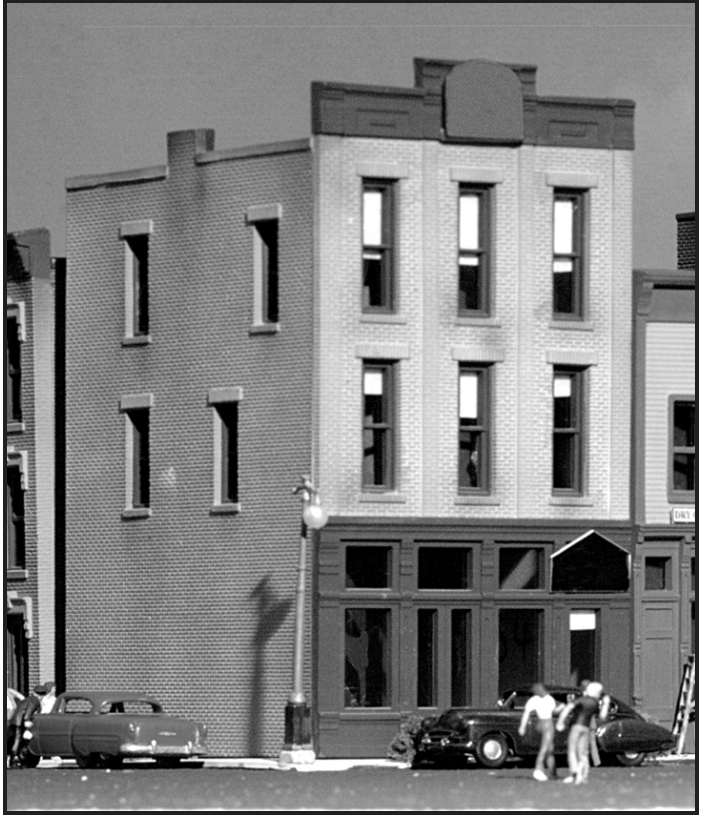
To assemble gable roof, see enclosed # 201 Roof Assembly Instructions.





**WOODLAND
SCENICS®**

HO SCALE STRUCTURE KIT



VEHICLES AND FIGURES NOT INCLUDED

MADE IN USA

©2002 OCO

Scale Model Material

WOODLAND SCENICS
P.O. BOX 98, LINN CREEK, MO 65052
www.woodlandscenics.com

#RP14
MERL'S DRY GOODS
3" W x 4 1/2" D x 6" H



**WOODLAND
SCENICS®**

#RP14 Merl's Dry Goods

Please follow the River Pass General Instructions. You may be referred to the drawings and notes printed here. Please read through all instructions before beginning to build your kit.

Chimneys

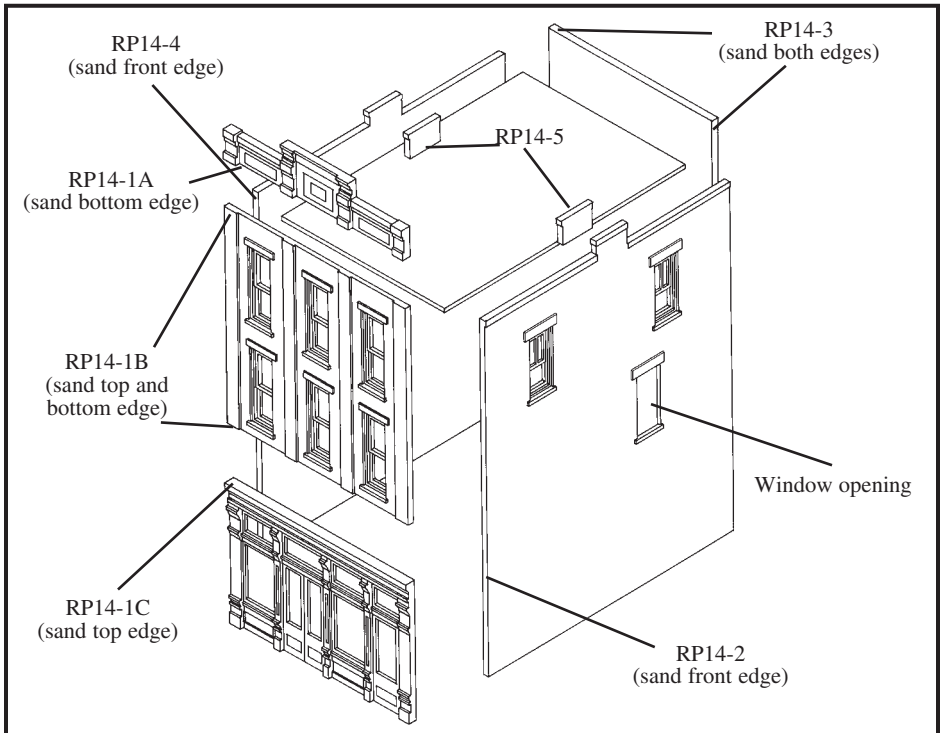
Lightly sand bottom edge of chimney backs (RP14-5). Sand or file the smooth sides of chimney backs and molded-in chimney fronts so back and front fit tightly and are flush with each other. Glue together. When glue is dry, sand tops of chimneys flat.

Building Front

Sand or file the bottom edge of RP14-1A, the top and bottom edge of RP14-1B, and the top edge of RP14-1C so the three pieces fit tightly and are flush with each other. Glue together.

Doors and Windows

Remove doors and windows from sprue. Paint them as desired (following General Instructions). Cut clear window material to cover backs of window frames. Glue to window frames, taking care that glue does not squeeze onto clear material where visible. "Flash" occurring inside of openings may have to be removed by scraping lightly with a hobby knife (X-Acto) to ensure a proper fit. Glue door and window assemblies in place.





**WOODLAND
SCENICS®**

HO SCALE STRUCTURE KIT



VEHICLES AND FIGURES NOT INCLUDED

MADE IN USA

©2002 OCO

Scale Model Material

WOODLAND SCENICS
P.O. BOX 98, LINN CREEK, MO 65052
www.woodlandscenics.com

#RP15
DAD'S MUSEUM
2 3/4" W x 4" D x 4 7/8" H



Please follow the River Pass General Instructions. You may be referred to the drawings and notes printed here. Please read through all instructions before beginning to build your kit.

Chimneys

Lightly sand bottom edge of chimney backs (RP15-5). Sand or file the smooth sides of chimney backs and molded-in chimney fronts so back and front fit tight and are flush with each other. Glue together. When glue is dry, sand tops of chimneys flat.

Building Fronts

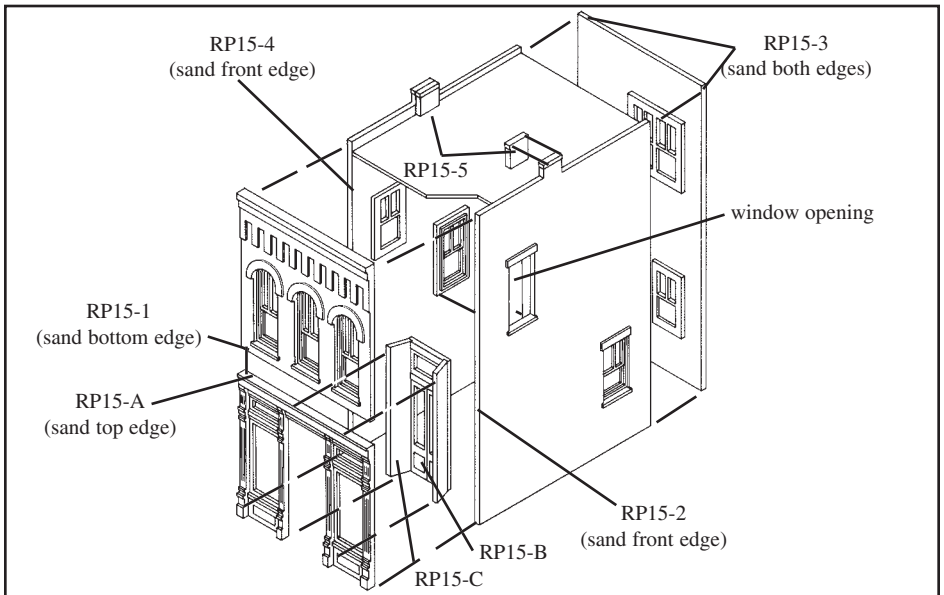
Sand or file the bottom edge of RP15-1 and the top edge of RP15-A so top and bottom fit tightly and are flush with each other. Glue together.

Doors And Windows

Remove doors and windows from sprue. Paint them as desired (following general instructions). Cut clear window material to cover backs of window frames. Glue to window frames taking care that glue does not squeeze onto clear material where visible. "Flash" occurring inside window and door openings may have to be removed by scraping lightly with a hobby knife (X-Acto) to ensure a proper fit. Glue door and window assemblies in place.

Entry Doors

Be careful not to damage the door frames when removing entry door (RP15-B) from sprue. Note that both entry side panels (RP15-C) have the same angle on both edges. While glue is still flexible on the resulting "entry assembly," glue edges to back of columns by opening on front wall (RP15-A).





**WOODLAND
SCENICS®**

**HO SCALE
STRUCTURE KIT**



FIGURES NOT INCLUDED

MADE IN USA

©2002 OCO

Scale Model Material

WOODLAND SCENICS
P.O. BOX 98, LINN CREEK, MO 65052
www.woodlandscenics.com

**RP4, RP7, RP13
DYDEN WOOL MILL**
16" W X 6 7/8" D



Dyden Wool Mill Suggested Building Placement

Dyden Wool Mill is a wool manufacturer. Because of the company's growth in the wool industry, additional buildings were constructed on to the main building (Dyden #1). Dyden #2 was the first addition, then Dyden #3.

Building Placement

Place the buildings according to the illustration (Fig. 1). It is best to attach Dyden #1 to the layout first. Turn the building upside-down and run a bead of Foam Tack Glue on the base. Set the building in place and allow glue to dry. Dyden #2 must be sanded smooth and flat on the wall where the #2 and #3 buildings meet (Fig. 2). If the buildings are set properly, there should be no need to adhere them to each other, but glue Dyden #2 and #3 to the layout in the same manner as your did Dyden #1.

Freight Dock Assembly

(packaged separately)

Paint the Freight Dock and the steps with a thinned wash of Black Earth Color Liquid Pigment for a realistic, weathered look. After the pigment has dried thoroughly on both pieces, glue the dock steps to the dock with white glue (Fig. 1). Set the Freight Dock next to Dyden #3 (Fig. 2). The dock should sit approximately 1/2" from the left side of the building, glue in place.

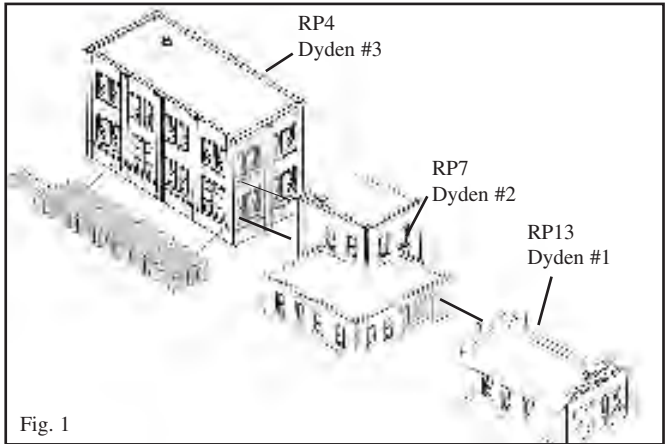


Fig. 1

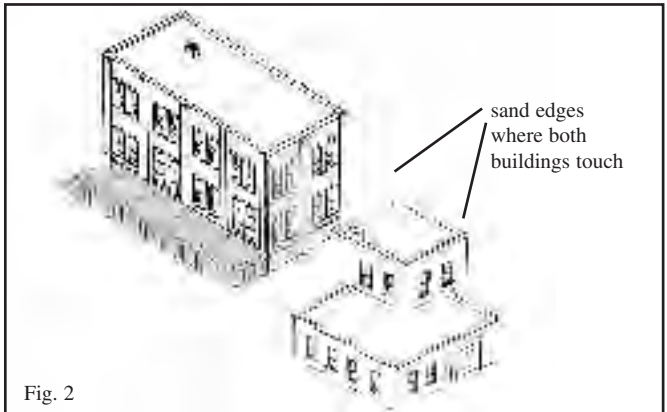


Fig. 2