

DEUCE'S BIKE SHOP PF5895

Model the local motorcycle repair shop and spice up the 'seedy' side of your layout town with historical flare. The positive alignment system ensures a quick, accurate assembly, and the pre-finished edges reduce preparation time. Kit includes lots of scene-setting details and accessories, such as motorcycles, lampposts, an old pop machine, a fenced side lot loaded with old bike parts, a junkyard dog and more!

MODELING AND CARE INFORMATION

This kit suggests the use of materials that may stain or cause damage. Take care to cover project area and clothing appropriately. Follow recommendations for use and clean up.

CAUTION

Cutting tools recommended. Use with care.

This item is not a Children's Product and is not intended for use by Children.



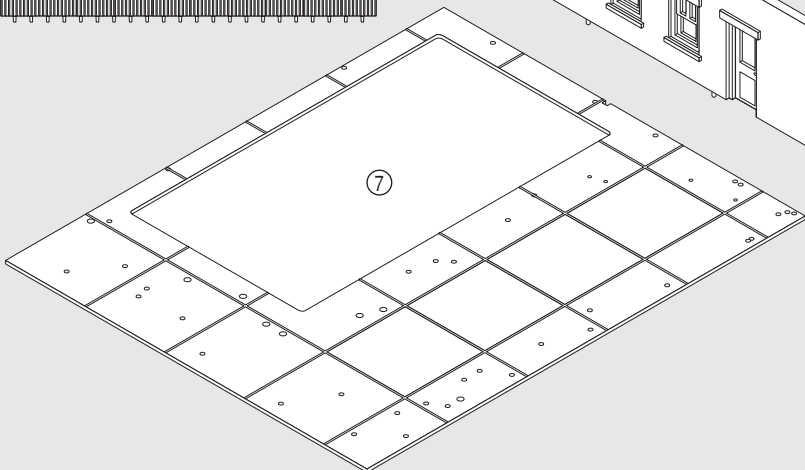
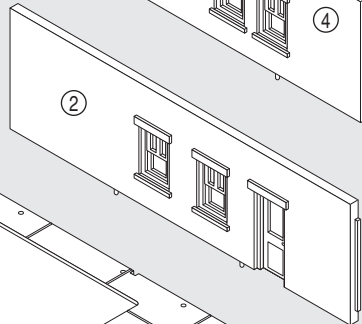
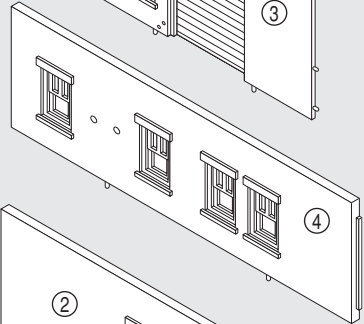
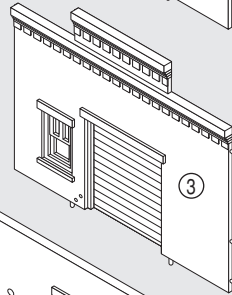
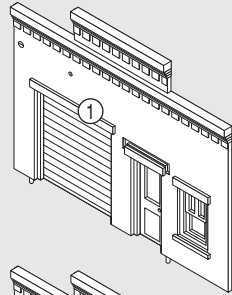
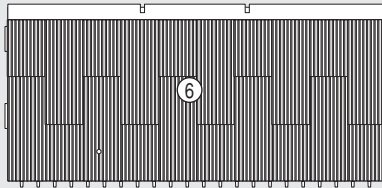
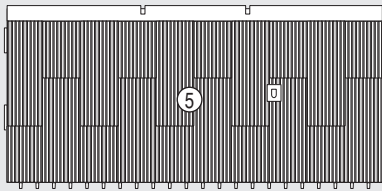
We make every effort to ensure our kits are manufactured complete. However, if this kit is missing a part, please make note of the kit name, number and missing part and contact the Woodland Scenics Sales and Customer Service Department at PO Box 98, Linn Creek, MO 65052, 573-346-5555 or sales@woodlandscenics.com.

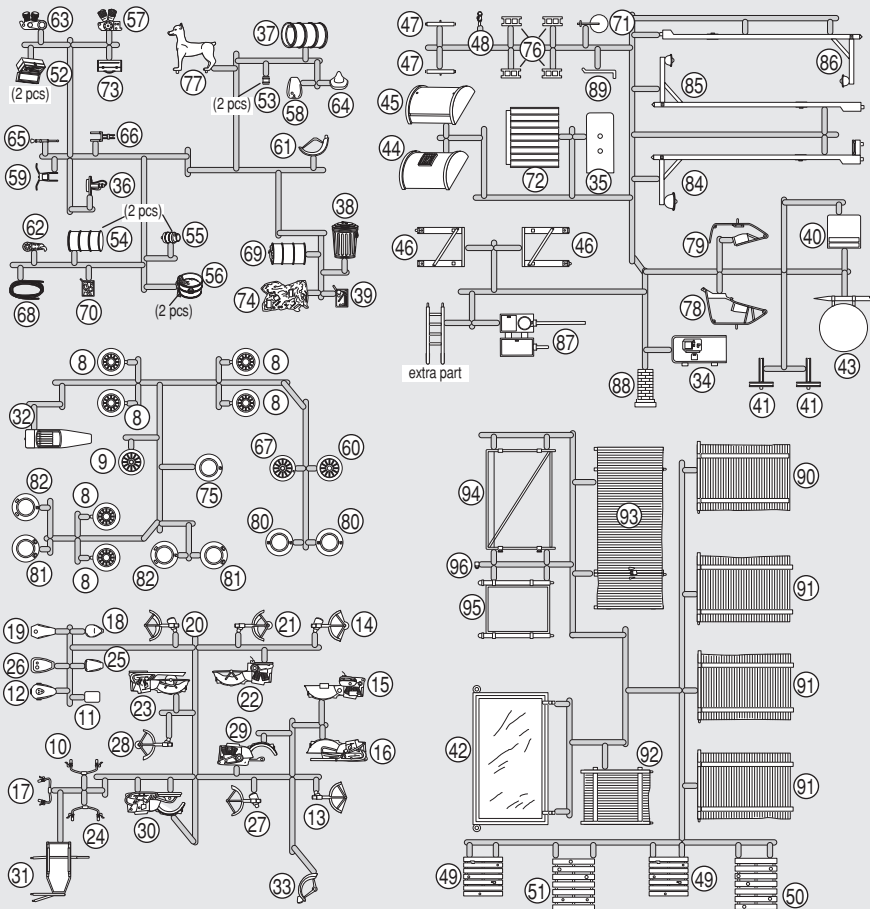


DEUCE'S BIKE SHOP

Building Kit Contents

- Wall and Roof Sections
- Sprues with Details
- Bagged Details (5 pcs)
- Printed Window Material
- Clear Window Material
- Dry Transfer Decals
- Printed Interior
- Wire for Sign
- Chain Link Fence Material
- Chain Material
- Turf for Base
- Blackout Paper





Before You Begin

- Read through instructions.
- Collect additional supplies.
- Check kit contents and verify Details.
- Cover project area with newspaper.

TIP! To assist in assembly, refer to exploded-view illustration on back of box.

Additional Needed Supplies

- | | |
|--|---|
| <input type="checkbox"/> Model Glue or Solvent-Based Plastic Cement* | <input type="checkbox"/> Fine-grade Sandpaper |
| <input type="checkbox"/> Paints (acrylic and/or enamel)* | <input type="checkbox"/> Double-sided Tape |
| <input type="checkbox"/> Primer* | <input type="checkbox"/> Tweezers |
| <input type="checkbox"/> Painting Tools | <input type="checkbox"/> Scissors |
| <input type="checkbox"/> Hobby Knife / Flush Cutting Shears | <input type="checkbox"/> White Glue |
| <input type="checkbox"/> Cyanoacrylate Adhesive (CA glue / super glue) | <input type="checkbox"/> Newspaper |

NOTE: Allow glue to set before moving to the next step. Plastic cement works by dissolving the surface of plastic and welding parts together. Avoid contact with detail on parts.

*Contact your local hobby shop for recommendations.

1. Building and Detail Preparation

- Remove mold flash from Wall Sections, Roof and Details using a hobby knife and sandpaper (**Fig. 1a**). Make sure grooves in Wall Sections are free of mold debris. Do not remove Details from sprues at this time.
- Wash Wall Sections, Roof and Details in warm, soapy water using a mild detergent. Rinse and let dry.
- Details can be left on sprues (recommended) or removed for priming and painting. Remove using a hobby knife (or flush cutting shears) and sand off parting lines (**Fig. 1b**). Details may be easier to paint on sprue. It also makes identifying them easier during assembly.
- Do not remove placement posts or installation tabs (**Fig. 1c**).

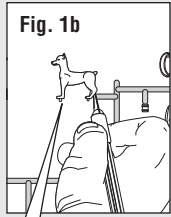
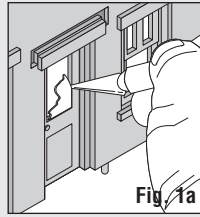


Fig. 1a

Fig. 1b



Placement Posts

2. Prime and Paint

Do not prime or paint placement posts. Some Details may be easier to paint once assembled. We recommend painting Wire for Sign, Chain Link Fence Material and Chain Material with flat-finish enamel spray paint.

- Apply a thin coat of primer and let dry.
- Paint as desired and let dry. See Tips & Techniques on pg. 10 for painting tips and weathering techniques.

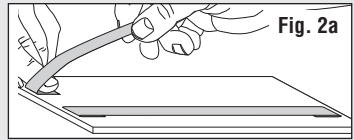


Fig. 2a

TIP! To make priming and painting loose Details easier, secure them to strips of masking tape (sticky side up) attached to a piece of cardboard (**Fig. 2a and 2b**).

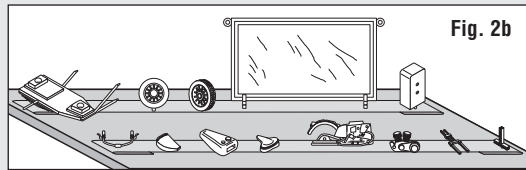


Fig. 2b

3. Turf for Base

IDEA! Model weeds growing up through cracks in cement foundation.

- Using a fine-tip paintbrush, paint cracks onto Base ⑦ and let dry thoroughly (**Fig. 3a**).
- On select cracks, brush on white glue. While glue is wet, sprinkle on Turf. Let dry and shake off excess. (**Fig. 3b**)

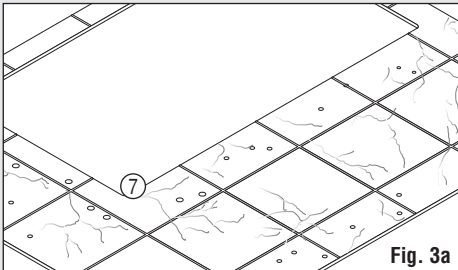


Fig. 3a

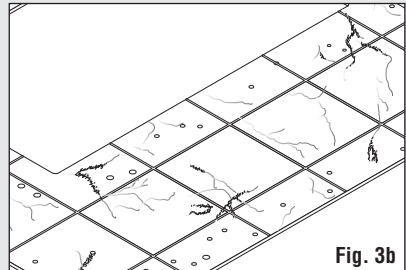


Fig. 3b

4. Install Window Material

Position Printed Window Material on inside of Building. Remove protective film before installation. If clear windows are preferred, use Clear Window Material.

- Align Window Material over corresponding windows on inside of Building. Dab a small amount of glue carefully around edges (**Fig. 4a**).
- Repeat for each set of window openings.

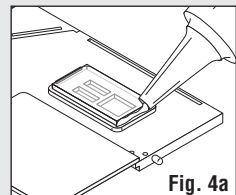


Fig. 4a

5. Apply Dry Transfer Decals

Dry Transfer Decals are included for Roof Sign (42), Front Sign (43), Standing Sign (40), Soda Machine Front (34) and Fencing Sections (90, 91) x3, (92) and (93). Before applying Decals to Signs, test fit to confirm proper placement.

- Cut out desired Decal. Avoid handling the back and position in desired location. Rub over entire Decal with a burnisher or dull pencil
- Lift away carrier sheet carefully. If Decal did not transfer completely, let carrier sheet fall back in place and burnish again.
- Place backing paper over Decal and burnish again for maximum adhesion.
- If applying onto textured surface, press Decal into texture with a pencil eraser.

6. Assemble Building

Apply glue into grooves and along inside seams.

- Insert tabs on Right Wall (2) into grooves in Front Wall (1) (**Fig. 6a**).
- Align tabs and groove in Right Roof Section (5) with Walls (1) and (2) (**Fig. 6b**).
- Glue Left Wall (4) to Front Wall (1), then attach Left Roof Section (6).
- Glue Back Wall (3) into place on Walls (2), (4) and Roof Assembly (**Fig. 6c**).
- Align placement pins on bottom of Building Assembly with placement holes in Base (7) and glue in place (**Fig. 6d**).

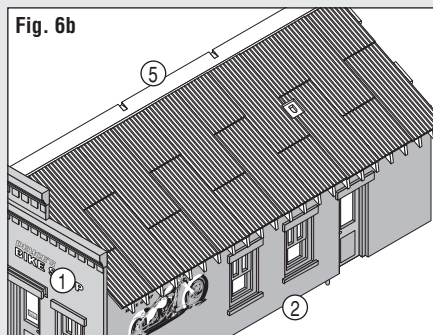
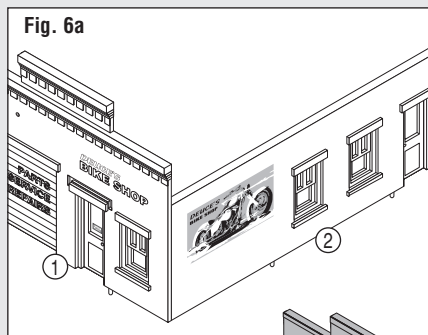


Fig. 6c

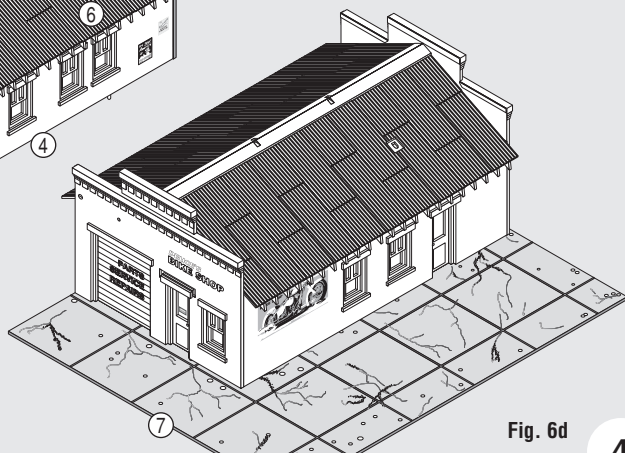
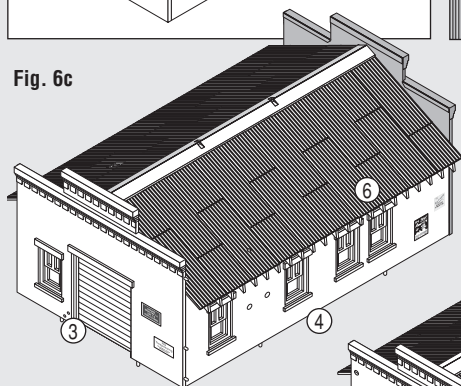


Fig. 6d

IMPORTANT Install Details using Cyanoacrylate Adhesive (CA glue / super glue). If Details were left on sprue while painting, remove during assembly using a hobby knife (or flush cutting shears). Sand parting lines and touch-up with paint. Most Details have unique placement posts for predetermined locations. Test fit Details before gluing. Place Details without placement posts/hole where desired on layout.

7. Preassembly

NOTE: On Motorcycles 1, 2 and 3, position Motorcycle Tires (8) with placement posts facing down. Do not glue in place.

Motorcycle 1 (Fig. 7a)

- Glue Front Fender Assembly-Left (13), Tire (8) and Front Fender Assembly-Right (14).
- Glue Rear Assembly-Left (15), Tire (8) and Rear Assembly-Right (16).
- Install Gas Tank (12) onto Rear Assembly and Front Wheel Assembly onto Gas Tank. Attach Handlebars (10) and Bike Seat (11).

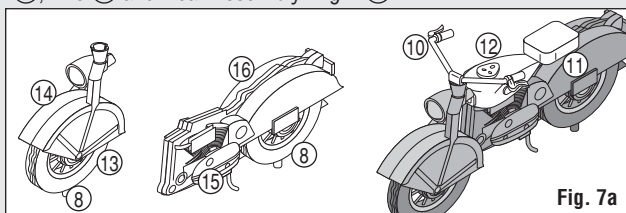


Fig. 7a

Motorcycle 2 (Fig. 7b)

- Glue Front Fender Assembly-Left (20), Tire (8) and Front Fender Assembly-Right (21).
- Glue Rear Assembly-Left (22), Tire (8) and Rear Assembly-Right (23).
- Install Gas Tank (19) onto Rear Assembly and Front Wheel Assembly onto Gas Tank. Attach Handlebars (17) and Bike Seat (18).

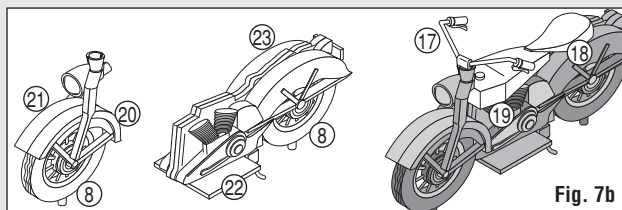


Fig. 7b

Motorcycle 3 (Fig. 7c and 7d)

- Glue Front Fender Assembly-Left (27), Tire (8) and Front Fender Assembly-Right (28).
 - Glue Rear Assembly-Left (29), Tire (8) and Rear Assembly-Right (30).
 - Install Gas Tank (26) onto Rear Assembly and Front Wheel Assembly onto Gas Tank. Attach Handlebars (24) and Bike Seat (25).
 - Glue Sidecar (32) to Sidecar Frame (31).
 - Insert Sidecar Tire (9) into Sidecar Front Fender Assembly (33), and glue onto Sidecar post.
- NOTE:** You may need to sand the post in order for parts to fit.

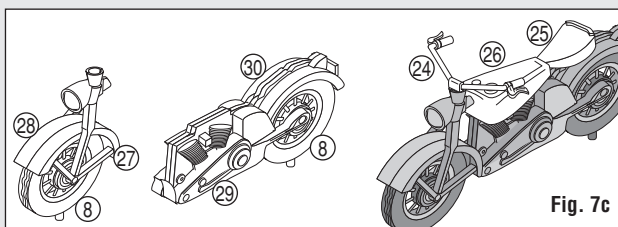


Fig. 7c

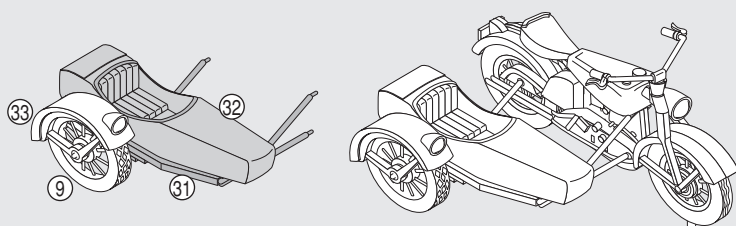


Fig. 7d

7. Preassembly cont.

Soda Machine (Fig. 7e)

- Glue Soda Machine Front (34) to Soda Machine Frame (35).

Trashcan and Toolbox (Fig. 7f)

- Glue Tool Crate (39) to Trashcan (38).

Trash Barrel and Junk Box (Fig. 7g)

- Glue Junk Box (70) to Trash Barrel (69).

Oil Drum (Fig. 7h)

- Glue Oil Drum Pump and Lid (36) to Oil Drum (37).

Standing Sign (Fig. 7i)

- Glue Support Legs x2 (41) to Standing Sign (40).

Double Tires (Fig. 7j)

- Glue Base Tire x2 (81) to Top Tire x2 (82).

Junk Pallets 1 and 2 (Fig. 7k)

Details on Junk Pallets 1 and 2 are placed identically, except one Barrel (54) is laid on its side and the other is stood on end.

- Glue Toolbox (52), Battery (53), Barrel (54), Canister (55) and Washtub (56) to Pallet (49) x2.

Junk Pallet 3 (Fig. 7l)

- Glue Engine (57), Gas Tank (58), Tire (60), Fender (61), Clutch Cover (62) and Handlebars (59) to Pallet (51).

Junk Pallet 4 (Fig. 7m)

- Glue Engine (63), Seat (64), Muffler (65), Tire (67), Cable (68) and Fork (66) to Pallet (50).

Bike Frame (Fig. 7n)

- Glue Bike Frame Sides (78) and (79).

Storage Tank (Fig. 7o)

- Glue Storage Tank Top (44) to Storage Tank Bottom (45), then add Nozzle (48).
- Glue Cross Supports x2 (47) to Support Leg (46) with placement posts facing up. Attach second Support Leg (46).
- Glue Tank Assembly to Support Legs Assembly.

Fig. 7e



Fig. 7f

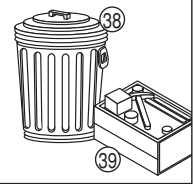


Fig. 7g

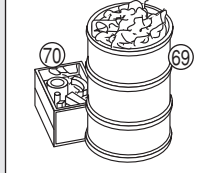


Fig. 7h

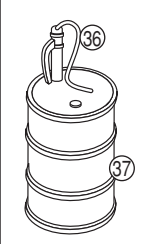


Fig. 7i

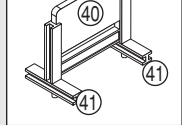


Fig. 7j



Fig. 7k

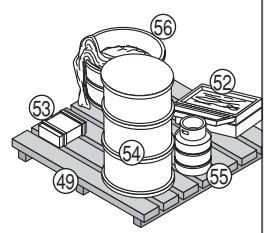
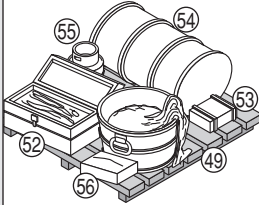


Fig. 7l

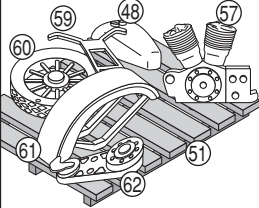


Fig. 7m

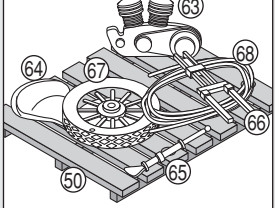


Fig. 7n

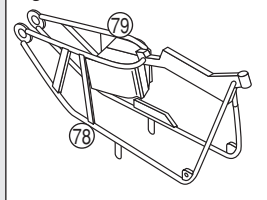
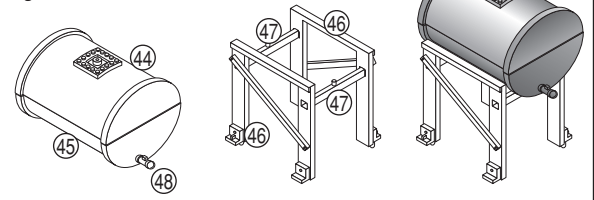


Fig. 7o



8. Install Details on Building

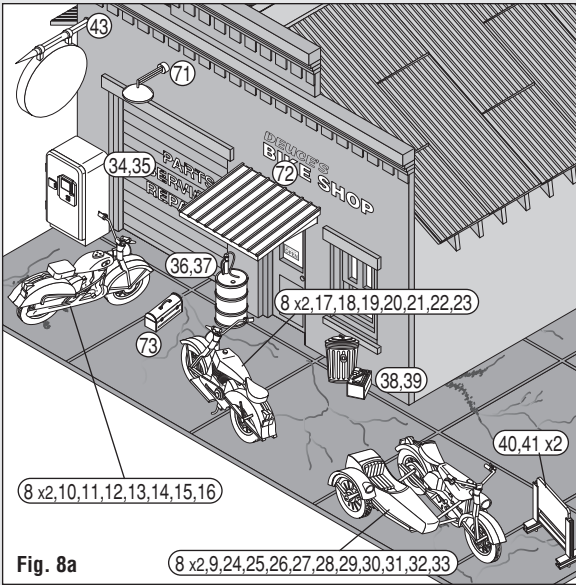


Fig. 8a

Front (Fig. 8a)

Light (71), Front Sign (43),
 Awning (72), Soda Machine
 Assembly (34,35), Oil Drum
 Assembly (36,37),
 Closed Toolbox (73),
 Motorcycle 1 Assembly
 (8 x2,10,11,12,13,14,15,16),
 Trashcan and Toolbox
 Assembly (38,39),
 Motorcycle 2 Assembly
 (8 x2,17,18,19,20,21,22,23),
 Standing Sign Assembly
 (40,41 x2),
 Motorcycle 3 Assembly
 (8 x2,9,24,25,26,27,28,29,30,31,32,33)

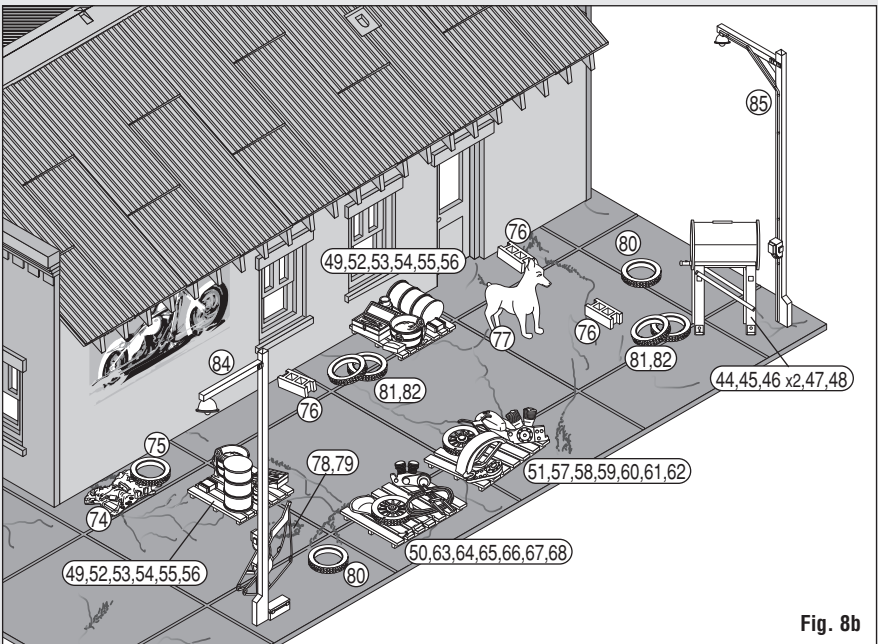


Fig. 8b

Right Side (Fig. 8b)

Junk Pile (74), Tire on Junk Pile (75),
 Junk Pallet 1 and 2 Assemblies x2 (49,52,53,54,55,56),
 Junk Pallet 3 (51,57,58,59,60,61,62),
 Junk Pallet 4 (50,63,64,65,66,67,68),
 Cinder Blocks x3 (76), Dog (77),
 Bike Frame Assembly (78,79),
 Single Tires x2 (80),
 Storage Tank Assembly (44,45,46 x2,47,48),
 Double Tires Assemblies x2 (81,82),
 Lamppost 1 (84), Lamppost 2 (85)

8. Install Details on Building cont.

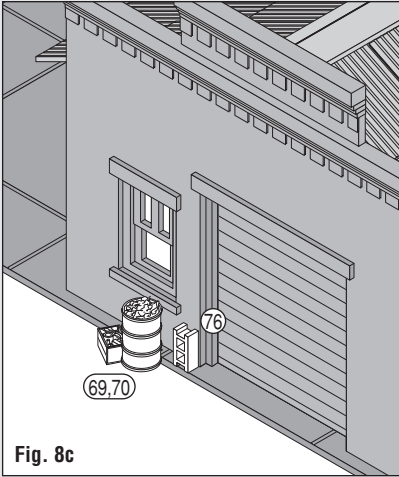


Fig. 8c

Back (Fig. 8c)
Trash Barrel and Junk Box Assembly
(69,70), Cinder Block (76)

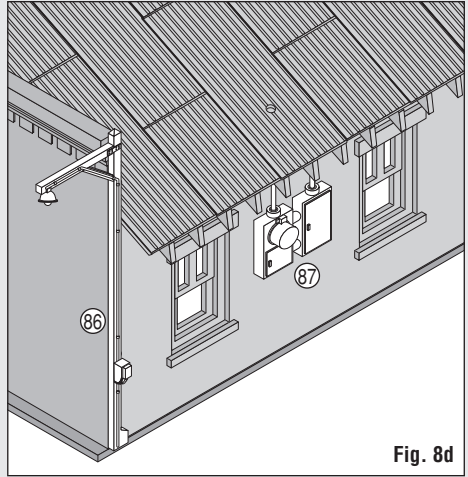
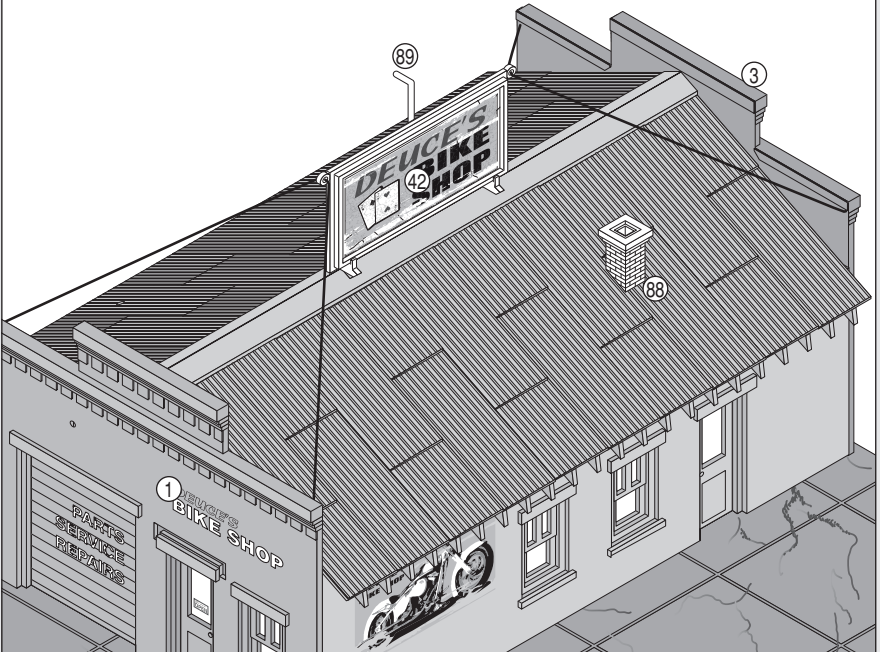


Fig. 8d

Left Side (Fig. 8d)
Lamppost 3 (86), Electric Meter (87)

Fig. 8e

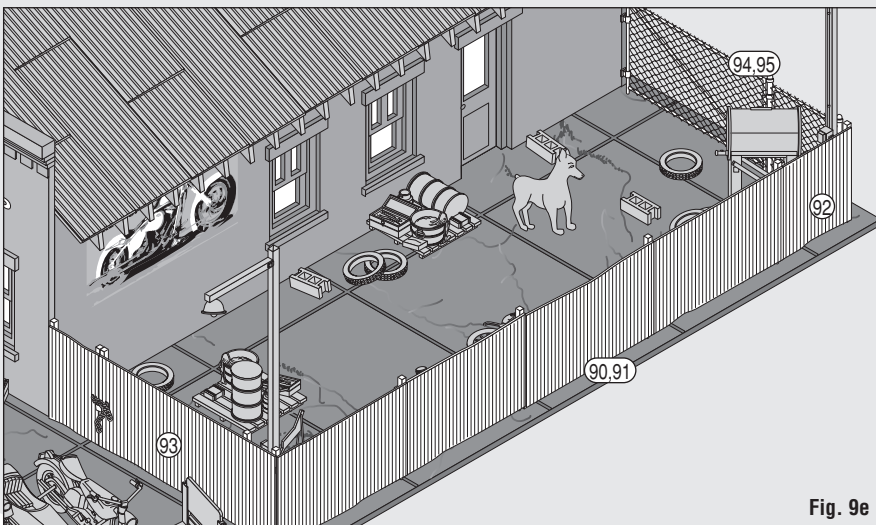
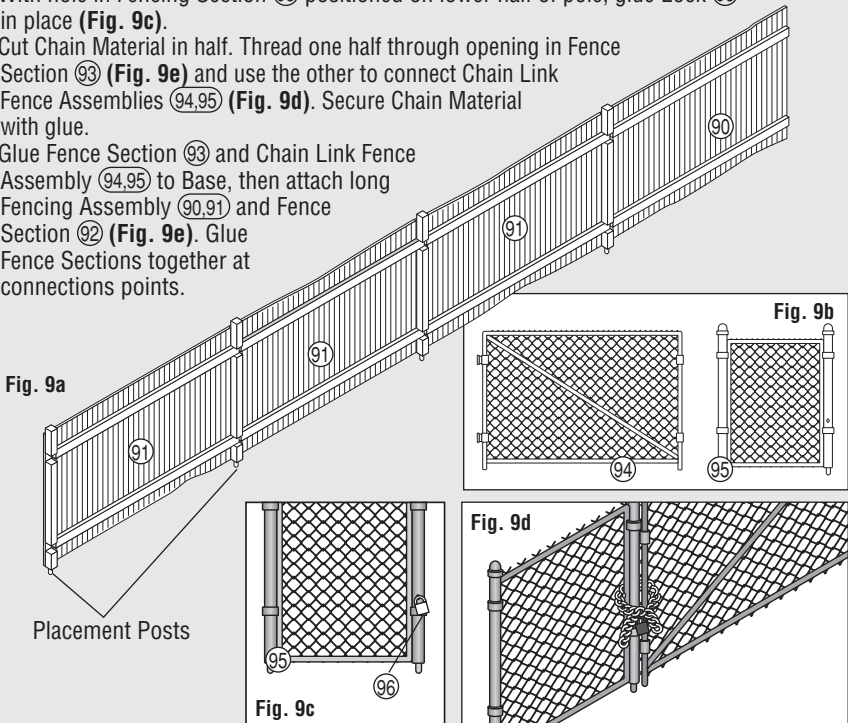


Roof (Fig. 8e)
Roof Sign (42), Chimney (88), Electric Conduit (89)

- Pull Sign Wire straight between fingers, then thread through holes in Sign until even. Secure ends of Wire into holes in backside of Walls (1) and (3).

9. Fencing

- Glue Fence Section 90 and Fence Sections x3 91 together with placement posts facing same direction (Fig. 9a).
- Place Fencing Sections 94 and 95 on Chain Link Fence Material with diamond pattern facing up and down. Trace around outer edges of Fence Sections. Cut to the inside of traced lines. Glue Material to backside of Fencing Sections with super glue or white glue (Fig. 9b).
- With hole in Fencing Section 95 positioned on lower half of pole, glue Lock 96 in place (Fig. 9c).
- Cut Chain Material in half. Thread one half through opening in Fence Section 93 (Fig. 9e) and use the other to connect Chain Link Fence Assemblies 94,95 (Fig. 9d). Secure Chain Material with glue.
- Glue Fence Section 93 and Chain Link Fence Assembly 94,95 to Base, then attach long Fencing Assembly 90,91 and Fence Section 92 (Fig. 9e). Glue Fence Sections together at connections points.



10. Printed Interior

The Printed Interior adds life and interest to the building and creates the illusion of occupation.

- Fold Printed Interior along score lines. Hold together with double-sided tape (**Fig. 10a**).
- Insert Printed Interior diagonally into Building from underneath. Align cutouts in Printed Interior with raceways on Wall ④ and Roof Section ⑥. Use cutouts in bottom flaps to pull flaps flush with Base. Use double-sided tape to secure.

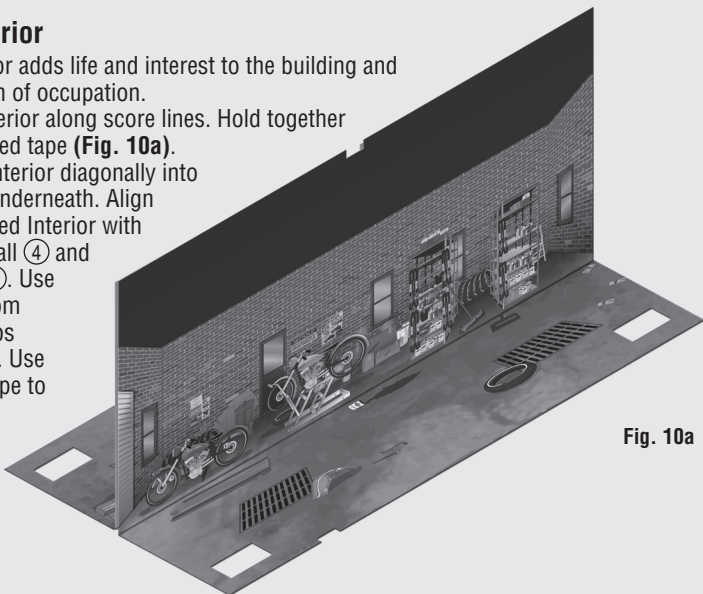


Fig. 10a

11. OPTION Blackout Paper

Use Blackout Paper instead of the Printed Interior to create the illusion of occupation.

- Cut two sheets of Blackout Paper, each measuring 9 1/2" L x 3" H.
- Place sheets on top of each other and cut a notch half-way up (**Fig. 11a**). Assemble and insert into Building diagonally (**Fig. 11b**).

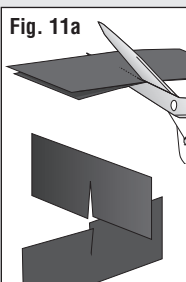


Fig. 11a

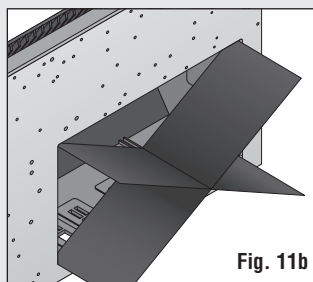


Fig. 11b

Tips and Techniques

Lighting

Deuce's Bike Shop has a lighting raceway and generic light socket. To reduce glare, paint interior walls and underside of roof a flat, earth-tone shade.

Painting

Airbrush or Hand-brush Use enamel (solvent-based) or acrylic (water-soluble) flat finish paint.

Aerosol Use flat finish spray paint.

Weathering Techniques

Mortar Wash Create the look of brick mortar or add a weathered look (formula follows). Lay building flat so wash spreads evenly. Using a paintbrush, dab on small amounts of Mortar Wash until desired look is achieved. Sponge off excess.

Formula: Mix 1-part acrylic paint (color suggestion: concrete or aged concrete), 12-parts rubbing alcohol, 8-parts water and 1 drop liquid dish soap.

Airbrush Spray thinned flat black paint lightly onto select areas (color suggestion: grimy black). Add more where discoloration occurs naturally (near windows, roof details, etc.).

Chalk Rub a dark color of pastel chalk on sandpaper to create chalk dust (color suggestion: gray, black, brown, etc.). Using a paintbrush, dab chalk dust where discoloration can occur.

Decals Age Decals by scoring and chipping with a hobby knife.

Look for These Other O Scale Landmark Structures Building Kits at Your Local Hobby Shop



**Lubener's General
Store PF5890**



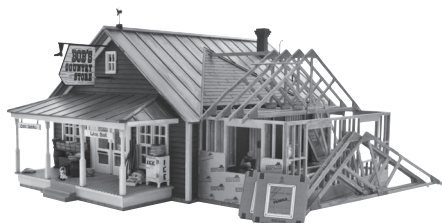
**Harrison's
Hardware PF5891**



**J.W. Cobbler
PF5892**



**Corner Emporium
PF5893**



**Country Store
Expansion PF5894**