

LANDMARK STRUCTURES®

O SCALE
1:48
BUILDING KIT

LUBENER'S GENERAL STORE

PF5890

Model the local general store or other downtown storefront, where patrons can shop for groceries, household items or sundries. The positive alignment system ensures a quick, accurate assembly, and the pre-finished edges reduce preparation time. Kit includes lots of scene-setting accessories, such as awnings, bubblegum dispensers, signs, light fixtures and more!

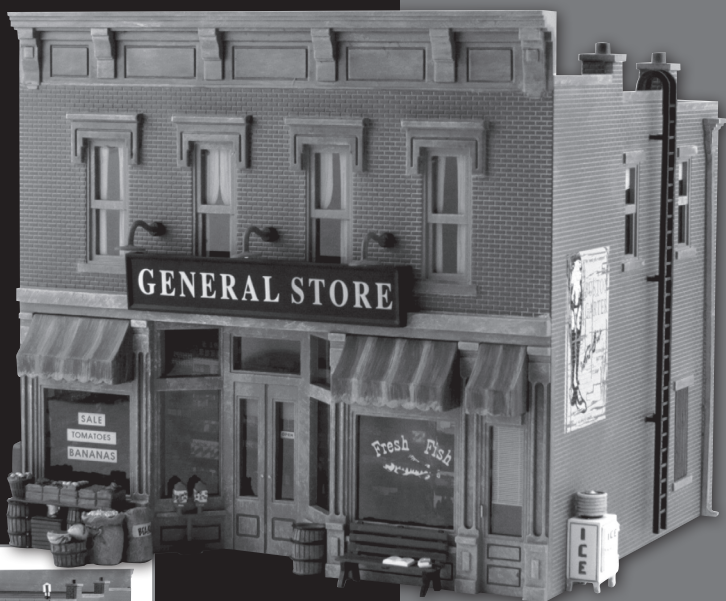
MODELING AND CARE INFORMATION

This kit suggests the use of materials that may stain or cause damage. Take care to cover project area and clothing appropriately. Follow recommendations for use and clean up.

CAUTION

Cutting tools recommended. Use with care.

This item is not a Children's Product and is not intended for use by Children.



We make every effort to ensure our kits are manufactured complete. However, if this kit is missing a part, please make note of the kit name, number and missing part and contact the Woodland Scenics Sales and Customer Service Department at PO Box 98, Linn Creek, MO 65052, 573-346-5555 or sales@woodlandscenics.com.



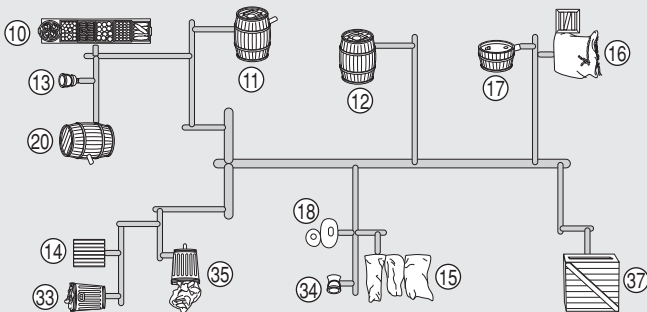
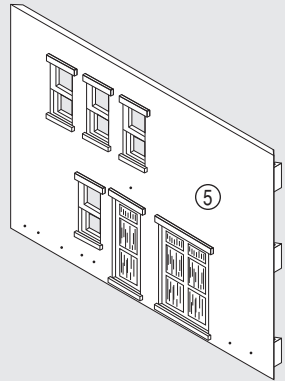
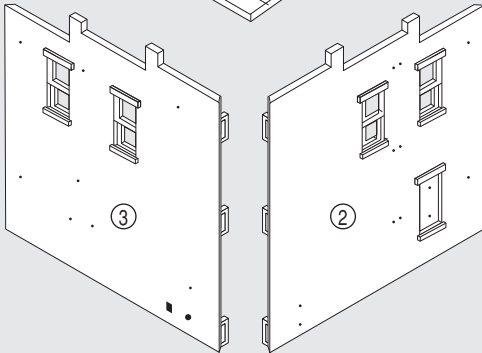
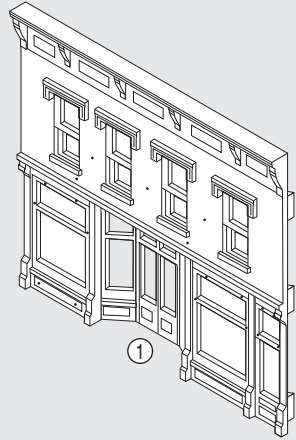
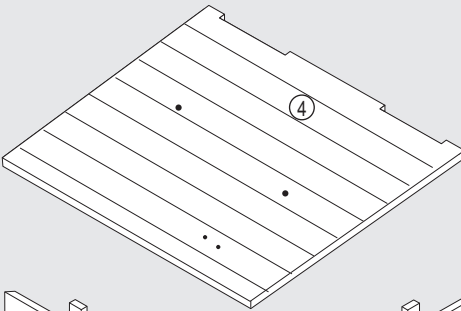
WOODLAND SCENICS®

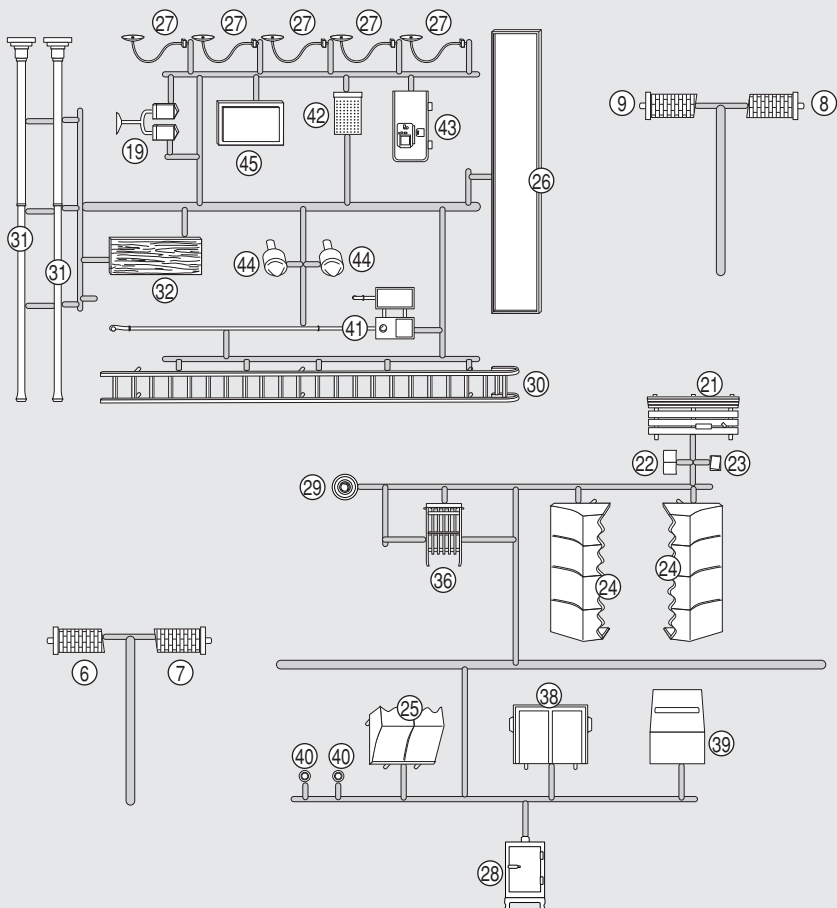
XPF5890INST F5 ©2013 O CO
Printed by a certified Green Printer

LUBENER'S GENERAL STORE

Building Kit Contents

- Wall and Roof Sections
- Sprues with Details
- Printed Window Material
- Clear Window Material
- Dry Transfer Decals
- Printed Interior
- Blackout Paper





Before You Begin

- Read through instructions.
- Collect additional supplies.
- Check kit contents and verify Details.
- Cover project area with newspaper.

TIP! To assist in assembly, refer to exploded-view illustration on back of box.

Additional Needed Supplies

- | | |
|--|---|
| <input type="checkbox"/> Model Glue or Solvent-Based Plastic Cement* | <input type="checkbox"/> Fine-grade Sandpaper |
| <input type="checkbox"/> Paints (acrylic and/or enamel)* | <input type="checkbox"/> Clear Tape |
| <input type="checkbox"/> Primer* | <input type="checkbox"/> Tweezers |
| <input type="checkbox"/> Painting Tools | <input type="checkbox"/> Scissors |
| <input type="checkbox"/> Hobby Knife / Flush Cutting Shears | <input type="checkbox"/> Ruler |
| <input type="checkbox"/> Cyanoacrylate Adhesive (CA glue / super glue) | <input type="checkbox"/> Newspaper |

NOTE: Allow glue to set before moving to the next step. Plastic cement works by dissolving the surface of plastic and welding parts together. Avoid contact with detail on parts.

*Contact your local hobby shop for recommendations.

4. Install Window Material

Position Printed Window Material on inside of Building. Remove protective film before installation. If clear windows are preferred, use Clear Window Material.

- Align Window Material over corresponding windows on inside of Building. Dab a small amount of glue carefully around edges (Fig. 4a).
- Repeat for each set of window openings.

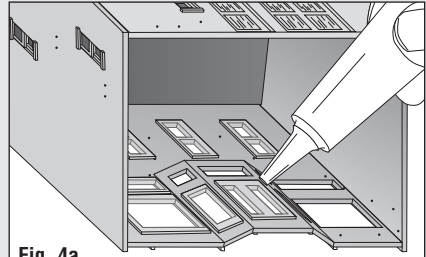


Fig. 4a

5. Apply Dry Transfer Decals

Dry Transfer Decals are included for Store Sign (26), 3 Sacks (15), Book (22), Newspaper (23), Ice Box (23), Dumpster Front (39) and Pop Machine (43). Before applying Decal to Store Sign (26), test fit on Building to confirm proper placement.

- Cut out desired Decal. Avoid handling the back and position in desired location. Rub over entire Decal with a burnisher or dull pencil.
- Lift away carrier sheet carefully. If Decal did not transfer completely, let carrier sheet fall back in place and burnish again.
- Place backing paper over Decal and burnish again for maximum adhesion.
- If applying onto textured surface, press Decal into texture with a pencil eraser.

6. Install Chimney Backs

Chimney Backs have specific placement due to slanted roof.

- Align and glue Right Front Chimney (6), Right Rear Chimney (7), Left Front Chimney (8), and Left Rear Chimney (9) (Fig. 6a).

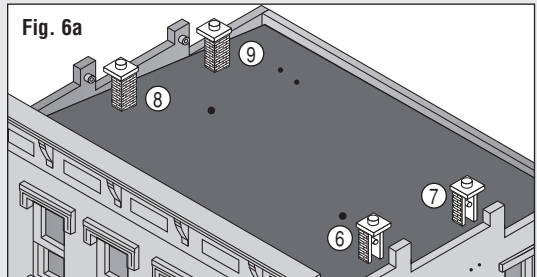


Fig. 6a

IMPORTANT Assemble and install Details using Cyanoacrylate Adhesive (CA glue / super glue). If Details were left on sprue while painting, remove using a hobby knife (or flush cutting shears). Sand parting lines and touch-up with paint. Details have unique placement posts for predetermined locations. Test fit Details before gluing.

7. Preassembly

Fruit Stand

- Glue Barrel (11), Pail (13), Barrel (12), and 3 Sacks (15) to Fruit Stand (10) (Fig. 7a).
- Glue Wood Crate (14) to Pail (13) (Fig. 7b).
- Glue Sack and Crate (16) to 3 Sacks (15) (Fig. 7c).
- Glue Melons (18) to Half Barrel (17), then glue to Sack and Crate (16) (Fig. 7d).

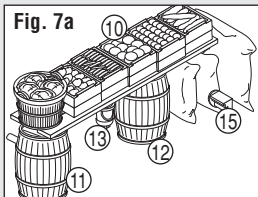


Fig. 7a

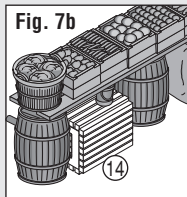


Fig. 7b

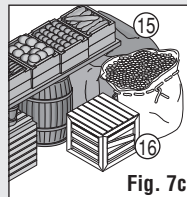


Fig. 7c

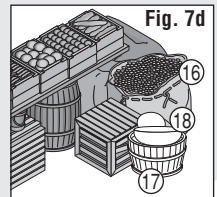
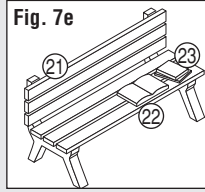


Fig. 7d

7. Preassembly cont.

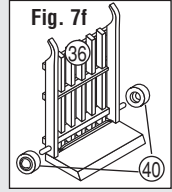
Store-Front Bench

- Glue Book (22) and Newspaper (23) to Bench (21) (Fig. 7e).



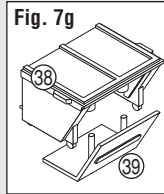
Handcart

- Glue Wheels x2 (40) to Handcart (36) (Fig. 7f).



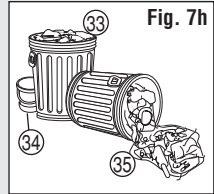
Dumpster

- Glue Dumpster Front (39) to Dumpster Frame (38) (Fig. 7g).

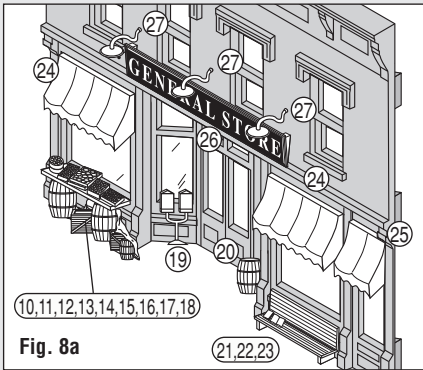


Trashcan Grouping

- Glue Spilled Trashcan (35) and Painl (34) to Standing Trashcan (33) (Fig. 7h).

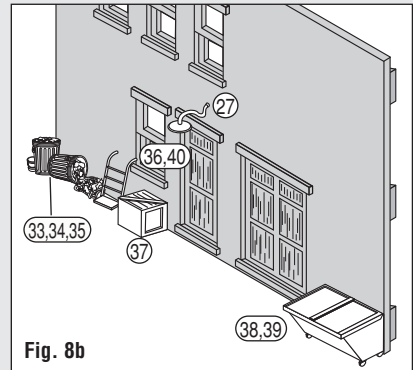


8. Install Details on Building



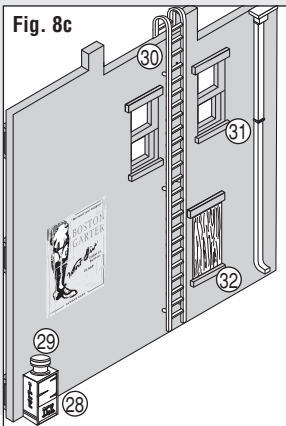
Front (Fig. 8a)

- Fruit Stand Assembly (10,11,12,13,14,15,16,17,18), Gumball Machine (19), Barrel (20), Bench Assembly (21,22,23), Awnings x2 (24), Small Awning (25), Store Sign (26), Lights x3 (27)



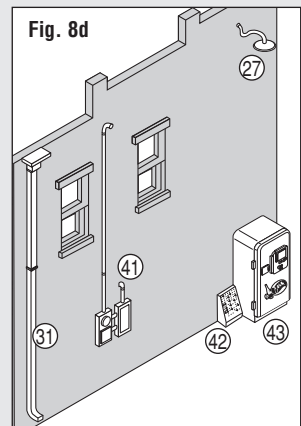
Back (Fig. 8b)

- Trashcan Grouping (33,34,35), Handcart Assembly (36,40), Large Crate (37), Dumpster Assembly (38,39), Light (27)



Right Side (Fig. 8c)

- Ice Box (28), Compressor (29), Ladder (30), Drainage (31), Wooden Shutter (32)



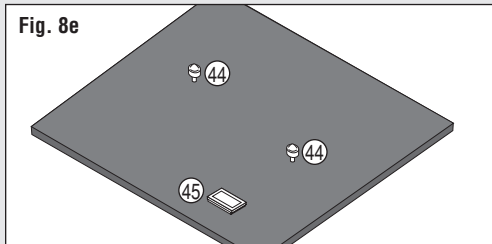
Left Side (Fig. 8d)

- Drainage (31), Electric Meter & Junction Box (41), Bottle Return (42), Pop Machine (43), Light (27)

8. Install Details cont.

Roof (Fig. 8e)

Vents x2 (44), Hatch (45)



9. Printed Interior & Blackout Paper

The Printed Interior and Blackout Paper add life and interest to the building and creates the illusion of occupation.

- Fold Printed Interior along score lines. Hold together with clear tape (Fig. 9a).
- Cut two sheets of Blackout Paper, each measuring 10" L x 5-7/8" H. Place sheets on top of each other and cut a notch half-way up (Fig. 9b). Assemble and insert into Building diagonally (Fig. 9c).
- Insert Printed Interior into Building, aligning with front windows and bottom of building.
- To hold in place, tape Insert along bottom edge of Front Wall and Blackout Paper to interior of Walls.

OPTION: Use Blackout Paper without the Printed Interior.

Fig. 9a

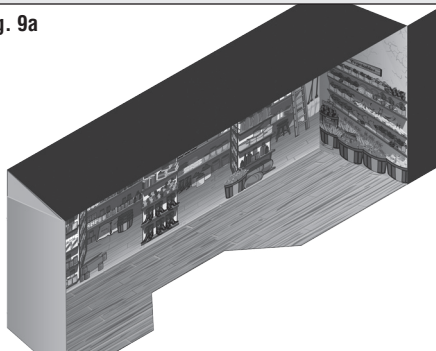


Fig. 9b

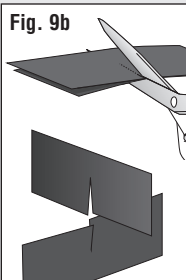
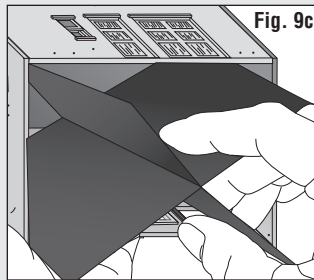


Fig. 9c



Tips and Techniques

Lighting

Lubener's General Store has a lighting raceway and generic light socket. To reduce glare, paint interior walls and underside of roof a flat, earth-tone shade.

Painting

Airbrush or Hand-brush Use enamel (solvent-based) or acrylic (water-soluble) flat finish paint.

Aerosol Use flat finish spray paint.

Weathering Techniques

Mortar Wash Create the look of brick mortar or add a weathered look (formula follows). Lay building flat so wash spreads evenly. Using a paintbrush, dab on small amounts of Mortar Wash until desired look is achieved. Sponge off excess.

Formula: Mix 1-part acrylic paint (color suggestion: concrete or aged concrete), 12-parts rubbing alcohol, 8-parts water and 1 drop liquid dish soap.

Airbrush Spray thinned flat black paint lightly onto select areas (color suggestion: grimy black). Add more where discoloration occurs naturally (near windows, roof details, etc.).

Chalk Rub a dark color of pastel chalk on sandpaper to create chalk dust (color suggestion: gray, black, brown, etc.). Using a paintbrush, dab chalk dust where discoloration can occur.

Decals Age Decals by scoring and chipping with a hobby knife.

Look for These Other O Scale Landmark Structures Building Kits at Your Local Hobby Shop



**Harrison's
Hardware** PF5891



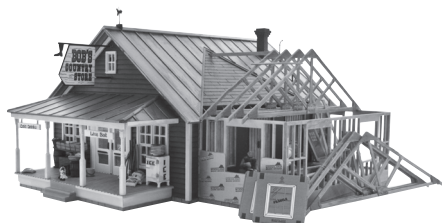
Corner Emporium
PF5893



J.W. Cobbler
PF5892



Deuce's Bike Shop
PF5895



**Country Store
Expansion** PF5894